

Retention and Graduation Report: Freshman Cohorts

University of Tennessee, Knoxville

November 2014

Table of Contents**I. Executive Summary****II. List of Figures**

1. Four, five and six year graduation rates for first-time full-time freshman over the period from 1987 to 2010.
2. First-time full-time freshman (FTFT) retention rates over the period from 2000 to 2013.
3. Retention and graduation rates for first-time full-time freshman by gender, Fall 2004-2013.
4. Retention and graduation rates for first-time full-time freshman by in-state residence status, Fall 2004-2013.
5. Retention rates for first-time full-time freshman by race/ethnicity, Fall 2004-2013.
6. Six year graduation rates for first-time full-time freshman by race/ethnicity, Fall 2004 – 2008.
7. Six year graduation rates and rates of students who continue to 2nd year for FTF under-represented minorities (URM) versus overall first-time full-time students , Fall 2004 – 2013.
8. Percent of first-time full-time freshman students who continue to the 2nd year by ACT Equivalent scores , Fall 2004-2013.
9. Graduation Rates of first-time full-time freshman graduating withing six years, by ACT Equivalent scores, Fall cohorts 2004-2008.
10. Percent of first-time full-time freshman (FTFT) that continue to the fall of the second year by core high school GPA categories, Fall 2004-2013.
11. Percent of first-time full-time freshman (FTFT) that graduate within 6 years by core high school GPA categories, Fall 2004- 2008 .

III. List of Tables

1. Initial number of students in first-time full-time freshman cohorts by gender, permanent address, race/ethnicity and minority status, Fall Cohorts 2004-2013.
2. Retention and graduation rates for first-time full-time freshman overall, by gender and Tennessee residence status, Fall Cohorts 2004-2013.
3. Retention and graduation rates for first-time full-time freshman by race/ethnicity and minority status, Fall Cohorts 2004-2013.
4. Retention and graduation rates for first-time full-time freshman by ACT Equivalent scores, Fall Cohorts 2004-2013
5. Retention and graduation rates for first-time full-time freshman by core GPA Scores, Fall Cohorts 2004-2013.

IV. Introduction**V. Trends in Retention and Graduation****VI. Appendix: Tables**

I. Executive Summary

Retention and graduation trends and rates are examined for first-time full-time Freshman (FTFT) cohorts at the University of Tennessee, Knoxville. Retention and graduation trends and rates are then calculated by subgroups including gender, residency, race / ethnicity, ACT Equivalent Scores, High School grade point Average (HSGPA).

Overall Trends in Retention and Graduation

- First-time full-time Freshman (FTFT) UTK cohort retention rates have increased from 2000 to 2013 cohorts for continued to 2nd, 3rd and 4th year by 8.3, 10.0 and 9.3 percent respectively ([Figure 2](#)).
- FTFT UTK cohort graduation rates have increased from 2000 to 2010 ([Figure 1](#)).
- Four, five and six year overall graduation rates have increased in the last 10 cohort years by 12.2, 11.2 and 9.2 percent, respectively ([Figure 1](#)).

Gender

- Females have higher average four, five and six year graduation rates (45.4, 65.9 and 68.1 percent, respectively) when compared to males four, five and six year rates (28.9, 56.7 and 62.3 percent, respectively), 2004-2010 cohorts ([Figure 4](#), [Table 2](#)).
- Females have a slightly better rate of completing the first year and re-enrolling in the fall of the second year at 85.5%. Males continue to the 2nd year at 82.6% ([Table 2](#), [Figure 3](#)).

Residency

- In-State FTFT freshman students perform better than Out-of-State students. The FTFT Students who are in the In-State group continue to the second year (84.9%) at a higher rate than Out-of-State group (78.8%). ([Figure 4](#), [Table 2](#).)
- Students in the In-State group have higher average six year graduation rate (66.4%) than those students who are in the Out-of-State group (59.2%). ([Figure 4](#), [Table 2](#).)

Race and Ethnicity

US citizens or US residents are grouped by ethnicity as Hispanics vs Non-Hispanics. The Non-Hispanics are further divided into races. Students who are not US citizens or US residents are placed in the Nonresident Alien group regardless of Ethnicity or race. The groups are

Nonresident Aliens, Hispanic of any race, Black or African American, Asian or Pacific Islander, American Indian or Alaska Native, White, Two or More Races and Unkown.

The break down in races follows the IPEDS classification with the exception of Pacific Islanders. In this report the Pacific Islanders are grouped with Asians instead of having their own category.

- In the cohort years of 2007-2013 Asian or Pacific Islander students continues to the second fall at a higher average rate of (90.5%) than other students (81.8%) ([Figure 5](#) , [Table 3.](#)).
- In 2011 non resident aliens came back the 2nd year at the highest (90.5%) ([Figure 5](#))
- Overall Asian or Pacific Islander students have the highest six year graduation rate (67.6%). Whites have a better graduation rate in 2004 and 2007 cohorts. Hispanics and Black or African American groups six year graduation rates trail at 56.8 and 56.0 percent ([Figure 6](#), [Table 3.](#)).

Under-Represented Minorities (URM)

Under-Represented Minorities includes Black or African Americans, Hispanics of any race, Two or More Races and American Indian/ Alaska Natives .

- The URM Cohort continues to the second fall at a slightly lower rate (80.7%) than UTK students overall 83.5 ([Figure 7](#), [Table 3.](#)).
- Six year graduation rates for the URM cohort average of 55.9% while the overall first time full time (FTFT) freshman cohort had a six year graduation of 65.3% ([Figure 7](#), [Table 3.](#) and [Table 2.](#)).

ACT Equivalent Scores

- For the FTFT students continuing to the 2nd year there is generally an increase in retention with an increase in ACT Equivalent scores ([Figure 8](#)).
- Students at UTK most often have ACT Equivalent scores between 22 -25 grouping and the 26-29 grouping (73% of FTFT freshman students) ([Table 4.](#)).
- Students continue to the 2nd year at a rate of 81.3 percent for the 22-25 ACT score group and 85.6 percent for the 26-29 ACT score group ([Table 4.](#)).

- FTFT freshman students with ACT Equivalent scores between 30 and 36 had a retention rate (continue to 2nd year) increase on average of 4.6 percent above students with scores between 26-29 in the years from 2004 to 2013 ([Table 4.](#))
- The retention rate (continue to 2nd year) is consistent across cohort years with the exception of the ACT score 18-21 group. Generally the higher the ACT Equivalent scores the higher the retention rates. ([Figure 8](#)).
- Six year graduation rates consistently increase with higher ACT Equivalent scores above 18 ([Figure 9](#)).

High School Grade Point Average

- The majority of First-time full-time (FTFT) freshman students (90.2%) from 2004-2013 have an high school grade point average greater or equal to 3.00 ([Table 5.](#))
- FTFT freshman who have a core high school grade point average in the range of 3.0 – 3.49, 3.5 – 3.99 or 4.00 above have a greater chance of coming back the fall of the second year than students with scores in the range of 2.5-2.99 ([Figure 10](#), [Table 5.](#))
- Six year graduation rate consistently increases with higher high school grade point average scores for the 2004 through 2008 cohorts ([Figure 11](#) , [Table 5.](#)).

IV. Introduction

Retention and graduation are two metrics used to assess the success of students. Students are followed from the day they first enroll to completion of their first degree. At the University of Tennessee, Knoxville (UTK) students are followed each fall of their undergraduate study. The student's cohort (group of students classified by certain distinguishing characteristics) is comprised of all students entering college for the first time at a freshman level, degree seeking and who are attending full time (FTFT cohort). The first fall is the initial cohort year and every year after that a student either continues with his/her studies (retained), graduates or stops out / drops out.

In this report we break down the FTFT cohorts by gender, race/ethnicity, minority status, Tennessee resident status, ACT Equivalent scores and high school grade point averages. The data is summarized to describe trends in the cohorts over time. Most trends will be analyzed over the last 10 years (2004-2013) cohorts. This report concentrates on the rates of FTFT cohorts returning to the second year and the FTFT students who graduate within six years. Emphasis is on completion and enrollment in the 2nd year because if students complete their first year they are generally more likely to go on to graduate.

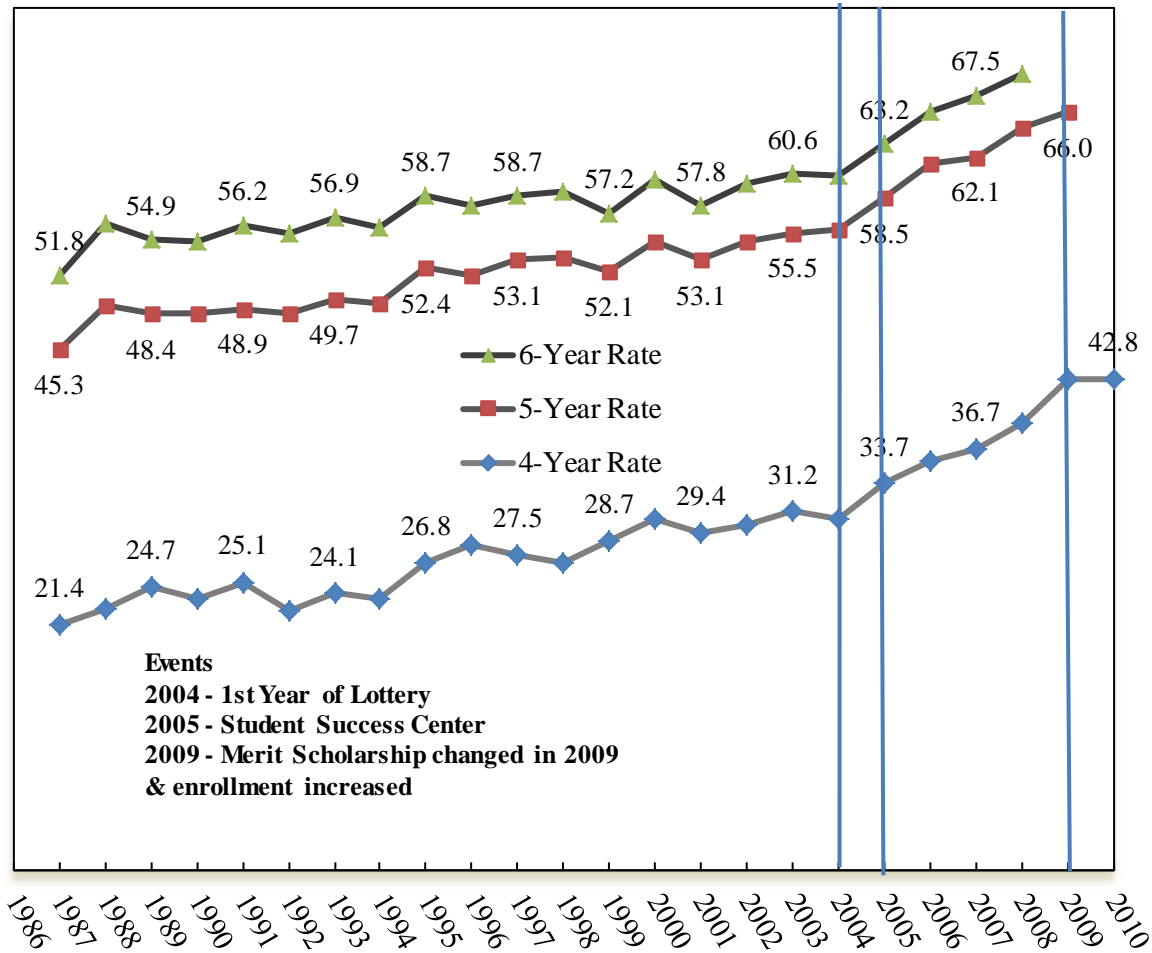
V. Trends in Retention and Graduation

At the University of Tennessee, Knoxville there has been a gradual increase in four, five and six year graduation rates for first-time full-time freshman over the last 2.5 decades with a sharper increase (8.8%) in graduation rate for the recent (2004-2008) cohorts ([Figure 1](#)). The four year rate increased in 2009 by 12.2 percent from the 2004 cohorts graduation rate (30.6%). The four year graduation rate for the 2009 and 2010 cohort was 42.8 percent ([Figure 1](#), [Table 2](#)).

FTFT freshman rates for 2nd year enrollment (continue to 2nd Fall) fluctuate from year to year. There is a sharp increase in students continuing on to their second year for the cohorts 2004 to 2006 (1.5 average increase/year). The rate of increase drops off slightly for the 2007 cohort and has only slightly increased (.5 average increase/year) for the 2008 – 2013 cohorts. ([Figure 2](#), [Table 2](#)).

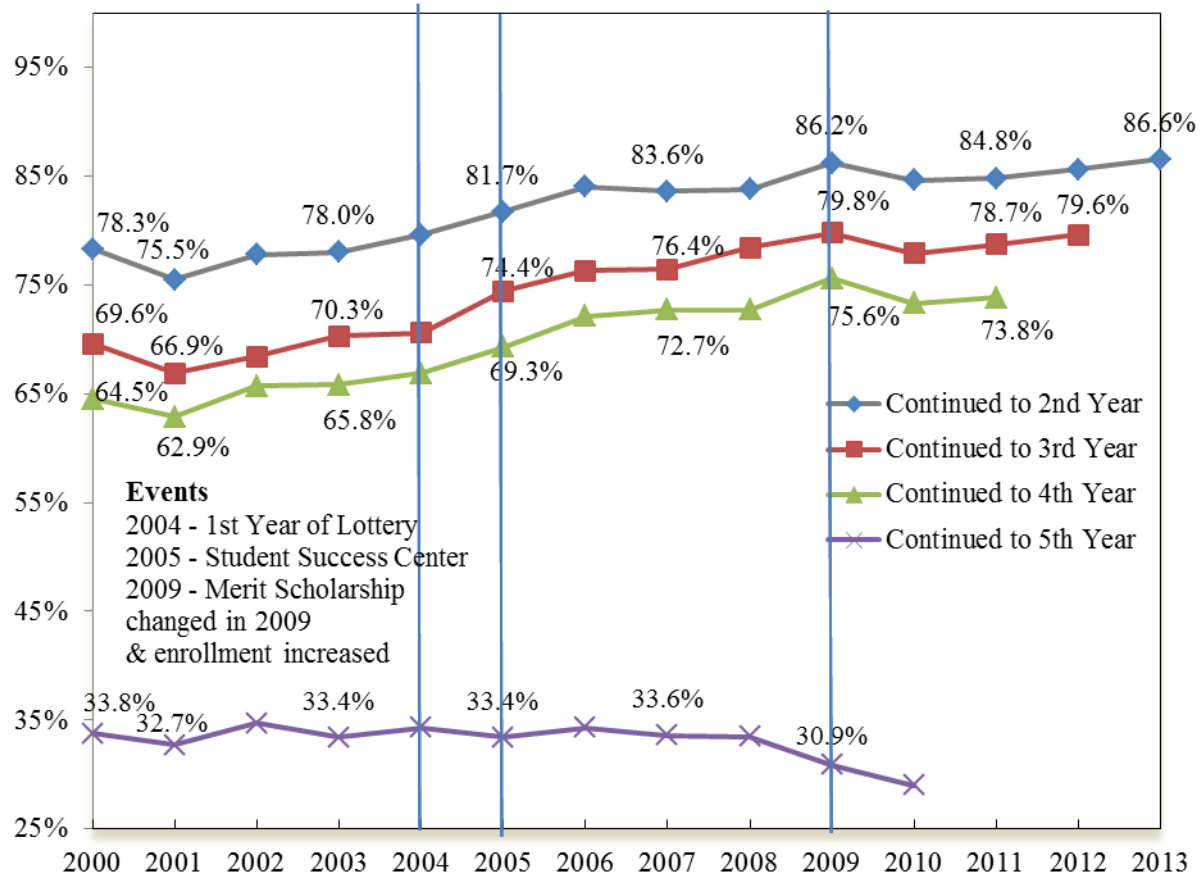
Some factors that may have affected retention and graduation in the last decade include first lottery scholarship year in 2004; Student Success Center created in 2005 and a one year change in criteria for the Merit Scholarship in 2009 which resulted in a decrease in freshmen enrollment by 500 students.

Figure 1. Four, five and six year graduation rates for first-time full-time freshman over the period from 1987 to 2010.



Source: OIRA

Figure 2. First-time full-time (FTFT) freshman retention rates , Fall cohorts 2000-2013.

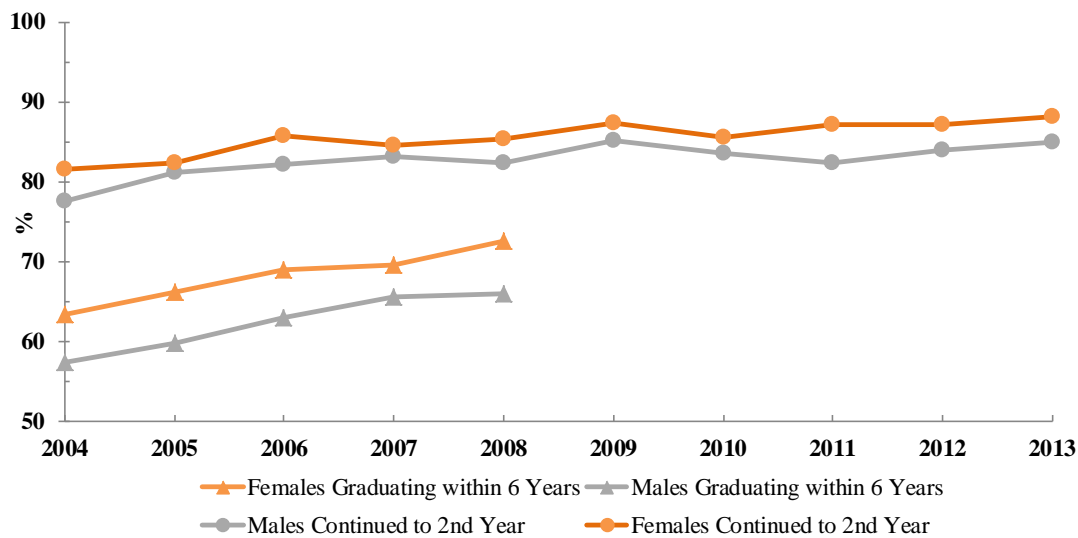


Source: OIRA

Gender

Examination of the cohorts by gender reveals that women graduate at higher rates than men. The four year average rates are around 16.5 % higher for women than they are for men for the 2004-2013 cohorts (Table 2) . The rates are closer for six year graduation rates with women graduating only at a 5.8% higher rate. Retention rates are closer between genders with men continuing in the fall of the 2nd year at 82.6 % on average versus females at 85.5% (Figure 3).

Figure 3. Retention and graduation rates for first-time full-time freshman by gender, Fall cohorts 2004-2013.



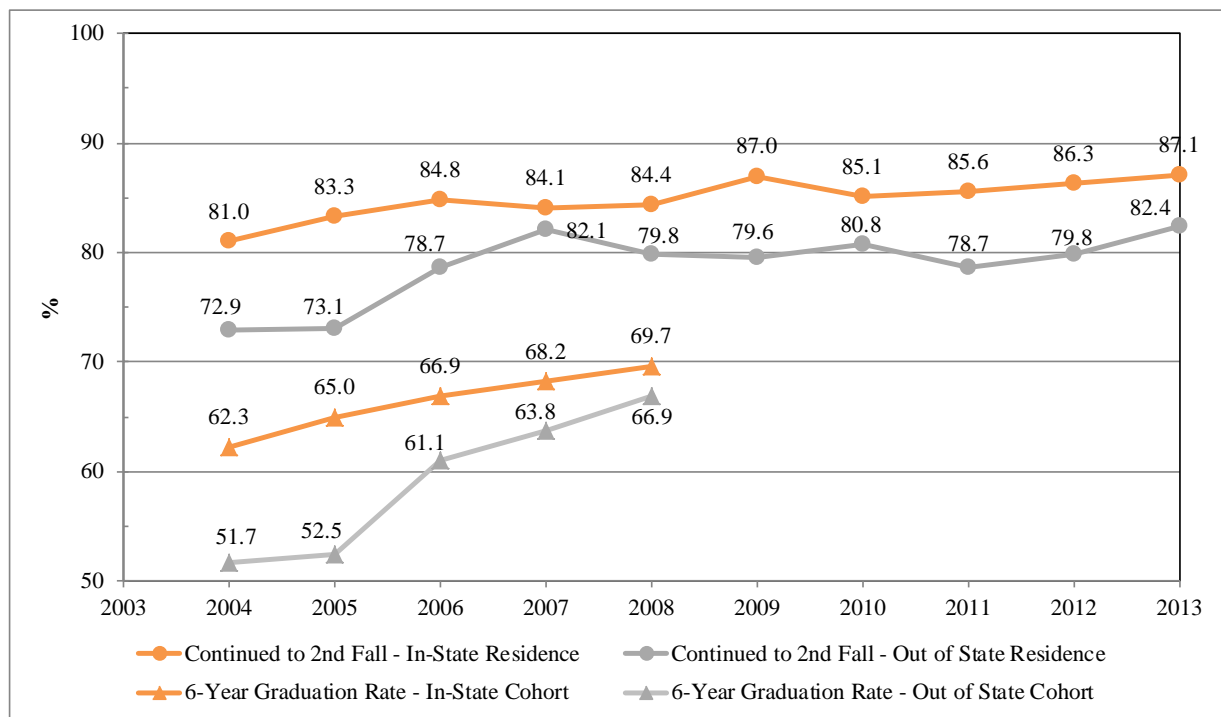
Cohort	2004	2005	2006	2007	2008	2009	2010	2011	2012	2013	Average
-----Male-----											
Entering Cohort	2,106	2,009	2,050	2,116	2,083	1,867	2,137	2,065	2,053	2,082	
Continued to 2 nd Year	77.5	81.1	82.1	83.1	82.3	85.2	83.6	82.4	84.0	84.9	82.6
4 Year Graduation Rate	22.7	24.9	26.8	29.6	29.8	33.0	35.5				28.9
5 Year Graduation Rate	50.8	53.7	57.1	58.5	59.6	60.3					56.7
6 Year Graduation Rate	57.3	59.8	63.0	65.5	66						62.3
-----Female-----											
Entering Cohort	2289	2232	2169	2215	2117	1831	2062	2110	2144	2,179	
Continued to 2 nd Year	81.6	82.3	85.7	84.5	85.3	87.3	85.6	87.2	87.2	88.1	85.5
4 Year Graduation Rate	37.8	41.6	44.0	43.6	47.9	52.8	50.4				45.4
5 Year Graduation Rate	60.3	62.8	65.6	65.5	69.7	71.7					65.9
6 Year Graduation Rate	63.3	66.2	69.0	69.5	72.5						68.1

Source: OIRA

In– State/Out of State Students

Students who are United States citizens or permanent resident and list Tennessee as their permanent address are considered In–State students. All others are considered Out-of-State students (including Nonresident Aliens). The retention trend for In-State students continuing to the second year is modestly increasing overall with an average rate of 84.9%. The Out-of-State trend slightly increases for 2004 – 2005 cohorts (+.2%) , sharply increases for 2006 to 2007 cohorts by (+2.4 %) and then levels off ending up 0.3% higher for the 2013 cohort (Figure 4, Table 2.). In-State students continue to the 2nd year 6.1% more than their Out-of-State counterparts. The In-State 6-year graduation rate increases for the 2004 - 2008 cohorts by 7.4 percent. The trend for the Out-of-State is a little more variable but makes a 15.2% gain in six year graduation rate for the 2004 - 2008 cohorts (Figure 4, Table 2.). In-State and Out-of-State six year graduation rates are recently trending closer.

Figure 4. Retention and graduation rates for first-time full time freshman by in-state residence status, Fall cohorts 2004-2013.



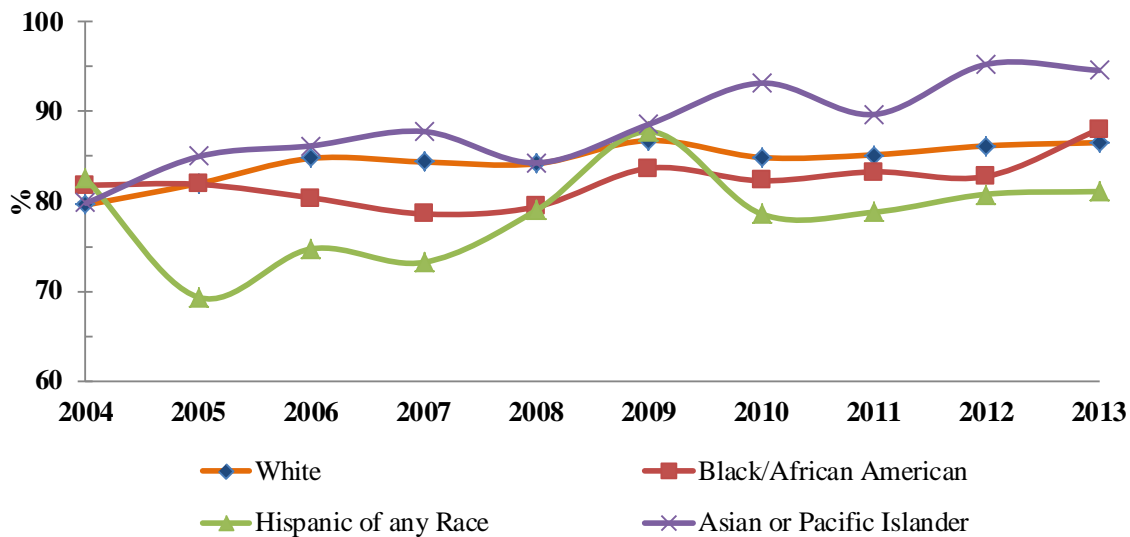
Source: OIRA

Race/Ethnicity

United States (US) citizens or US residents are grouped by ethnicity as Hispanics vs Non-Hispanics. The Non-Hispanics are further divided into races. Students who are not US citizens or US residents are placed in the Nonresident Alien group regardless of Ethnicity or race.

Comparison by race/ethnicity yields a 2nd year continuation rate for Asian/Pacific Islanders, Whites and Blacks/African Americans of 88.3% , 84.5% and 82.2%, respectively. The category of Two or more races was started in 2009 and is not included in the graph. Low numbers of American Indian / Alaska Natives in all cohorts led to exclusion from the graph. Generally the year-to-year variability is higher for Asian / Pacific Islanders and Hispanics than for Whites and Blacks / African Americans (Figure 5). All data is shown in Table 3. with trends. Average six year graduation rates are highest for Asians / Pacific Islanders at 67.6 percent followed by Whites at 66.6 percent. Hispanics and African Americans or Blacks have the lowest six year graduation rates at 56.8 and 56.0 respectively. For Hispanics of any race there was some losses in the 6 year graduation rate for 2005 and 2006 cohorts, however gains were made in 2007 and 2008 cohorts and the overall trend is up by 10.4% (Figure 6, Table 3.).

Figure 5. Retention rates for first-time full-time freshman by race/ethnicity, Fall cohorts 2004-2014-2013.



	2004	2005	2006	2007	2008	2009	2010	2011	2012	2013	Average
-----% Continued to 2nd year-----											
Nonresident Alien	60.0	77.5	65.0	87.2	90.3	87.5	78.0	90.5	90.9	90.3	81.7
Hispanic of any Race	82.5	69.3	74.7	73.2	79.0	87.8	78.6	78.8	80.8	81.1	78.6
Black or African American	81.8	81.9	80.4	78.6	79.4	83.7	82.3	83.3	82.8	88.1	82.2
White	79.6	82.0	84.8	84.4	84.2	86.8	84.9	85.2	86.2	86.6	84.5
Asian or Pacific Islander	79.8	85.0	86.2	87.8	84.3	88.6	93.2	89.7	95.3	94.6	88.5
Unknown Race	64.7	85.7	76.5	85.2	79.3	82.6	94.7	77.8	83.5	88.0	81.8
Two or More Races						76.6	80.0	70.7	77.0	82.2	77.3
% Continued into 2 nd Year	79.6	81.7	84.0	83.8	83.8	86.2	84.5	84.8	85.6	86.6	84.1

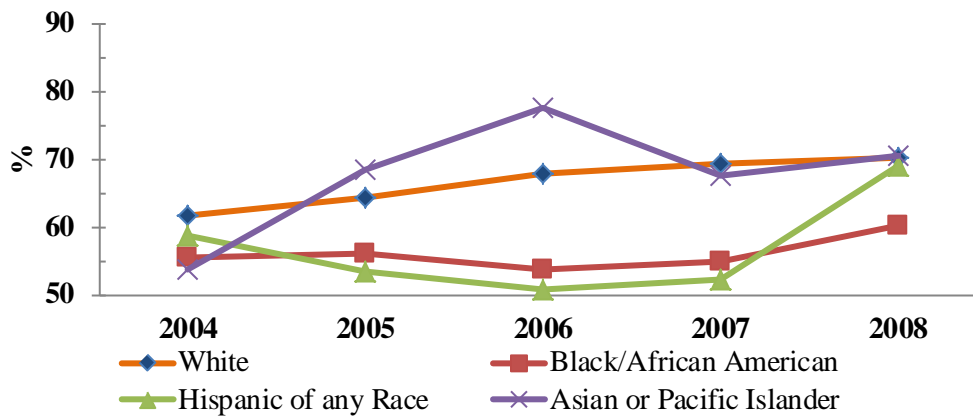
Race/ethnicity categories changed in 2009 and Two or More Races became an option.

Race/ethnicity is reported for U.S. citizens or permanent residents

American Indian or Alaska Natives are not shown because observations are less than 20.

Source: OIRA

Figure 6. Six Year Graduation Rates for first-time full-time freshman by race/ethnicity. Fall cohorts 2004-2008.



	2004	2005	2006	2007	2008	Average
-----% Graduated in 6 years-----						
Nonresident Alien	50.0	45.0	50.0	71.8	71.0	57.6
Hispanic of any Race	58.7	53.3	50.6	52.1	69.1	56.8
Black or African American	55.5	55.9	53.6	54.8	60.1	56.0
White	61.5	64.4	67.7	69.3	70.1	66.6
Asian or Pacific Islander	53.8	68.4	77.6	67.5	70.6	67.6
Unknown Race	47.1	57.1	58.8	63.9	62.1	57.8
% Graduated within 6 years	60.5	63.2	66.1	67.5	69.3	65.3

Race/ethnicity categories changed in 2009 and Two or More Races became an option.

Race/ethnicity is reported for U.S. citizens or permanent residents

American Indian/Alaska Native are not shown because observations are less than 20.

Source: OIRA

Minority Status

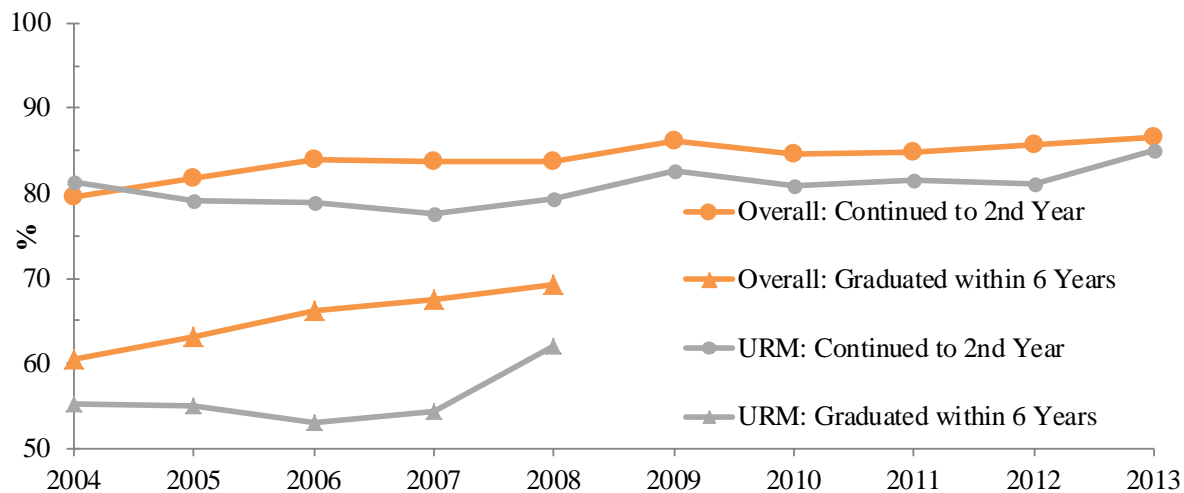
Under-Represented Minorities (URM) at UTK are comprised of Blacks or African Americans, Hispanics, American Indians or Alaska and students of two or more races. Races are only designated for United States citizens and permanent residents and all others are placed in the Nonresident Alien category. The URM students make up only 12.8 % of the First-time Full-time freshman (FTFT) cohort over the last ten years ([Table 1](#)).

The URM group has six year graduation rates that range from 55.2 to 62.1 percent as compared to the whole FTFT freshman cohort's rates of 60.6% to 69.3% for the 2004-2008 cohorts. The

average six year graduation rate for URM group is 55.9% as compared to 65.2 % for the overall FTFT freshman cohort (Figure 7, Table 3).

First time full time freshman students who came back the 2nd Fall had slightly higher return rates than the URM FTFT freshman group. The FTFT freshman student group continued to the 2nd year on average 83.5 percent while the URM FTFT group came back an average of 80.7 percent for the 2004-2013 cohorts (Figure 7, Table 3).

Figure 7. Six year graduation rates and rates of students who continue to 2nd year for FTF under-represented minorities (URM) versus overall first-time full-time students, Fall 2004 – 2013.



	2004	2005	2006	2007	2008	2009	2010	2011	2012	2013
Entering URM ^a Cohort	520	534	517	468	401	534	586	585	632	573
Continued to 2nd Year	81.3	79.2	78.9	77.6	79.3	82.6	80.9	81.5	81.0	85.0
Continued to 3rd Year	71.0	70.2	67.5	72.0	74.1	74.9	73.4	75.2	74.8	
Continued to 4th Year	65.4	64.2	62.5	65.2	70.6	70.6	65.5	68.7		
Continued to 5th Year	38.5	34.8	31.7	31.8	37.7	37.6	29.7			
4-Year Graduation	23.7	27.0	25.3	27.1	28.4	30.7	32.9			
5-Year Graduation	48.5	49.4	47.2	48.1	53.9	56.6				
6-Year Graduation Rate	55.2	55.1	53.0	54.3	62.1					

^aURM - (Black or African-American + Hispanic + Native American or Alaskan + Two or more options). Does not include Non-Resident Aliens.

Race/ethnicity categories changed in 2009 and Two or more Races became an option.

Source: OIRA

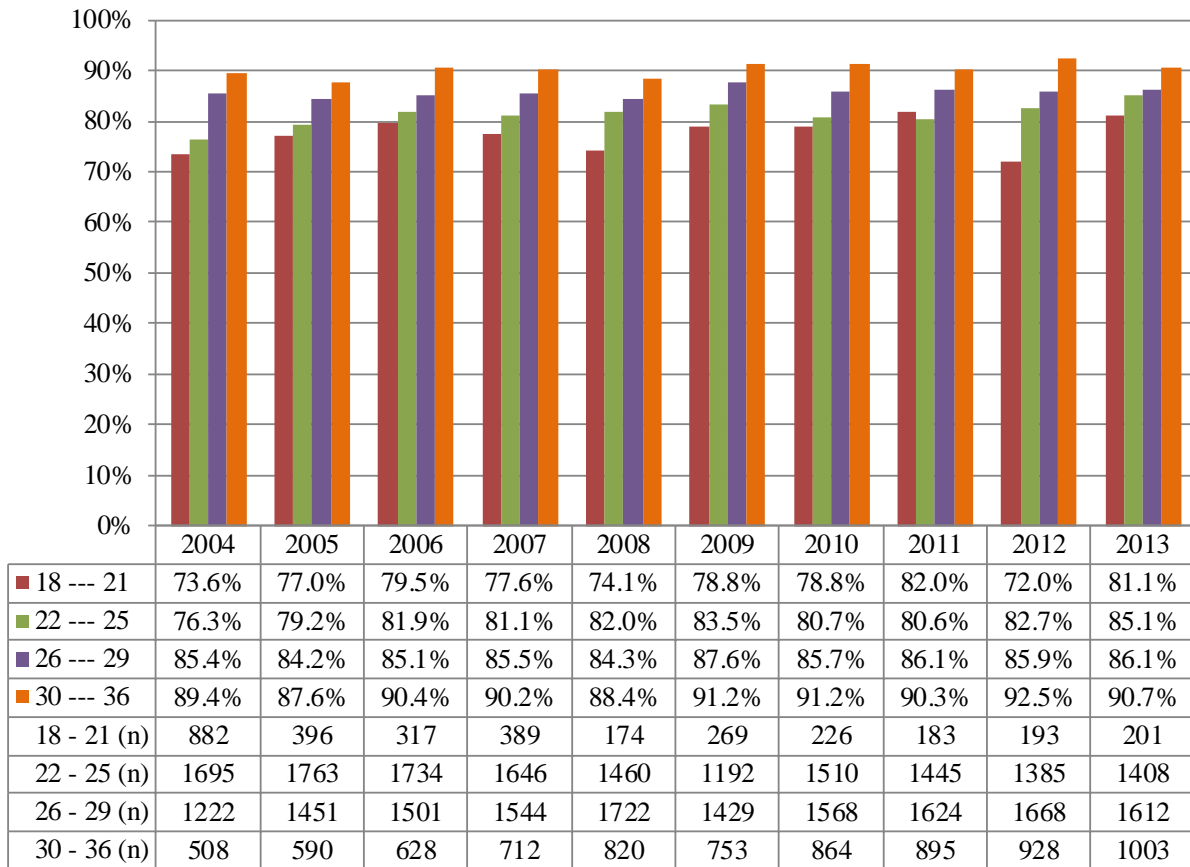
ACT- Equivalent Scores

Student Success is determined by several factors including high school grade point average and ACT scores. Since 2004 high school GPA has been calculated from core classes including Math, English or Language Arts, Social Studies, Science and Foreign Language. ACT Equivalent scores are composite scores from the ACT standardized test or from SAT tests converted to ACT. For the UTK FTFT students continuing to the 2nd year there is generally an increase in retention with an increase in ACT Equivalent scores ([Figure 8](#)). Students with ACT Equivalent scores between 30 and 36 had a rate increase on average of 12.8 percent above students with scores between 18-21 for cohorts 2004 to 2013 ([Table 4](#)). Students at UTK most often have ACT Equivalent Scores between 22 -29 ([Table 4](#)).

The trends within the cohort years are consistent with the exception of the 2011 group. In all cohorts except 2011, lower ACT Equivalent scores result in lower number of students in the cohort continuing to the second fall and higher scores result in higher rates. In 2011 the lowest score range of 18-21 was 1.4% higher than the 22-25 ACT Equivalent scores ([Figure 8](#)).

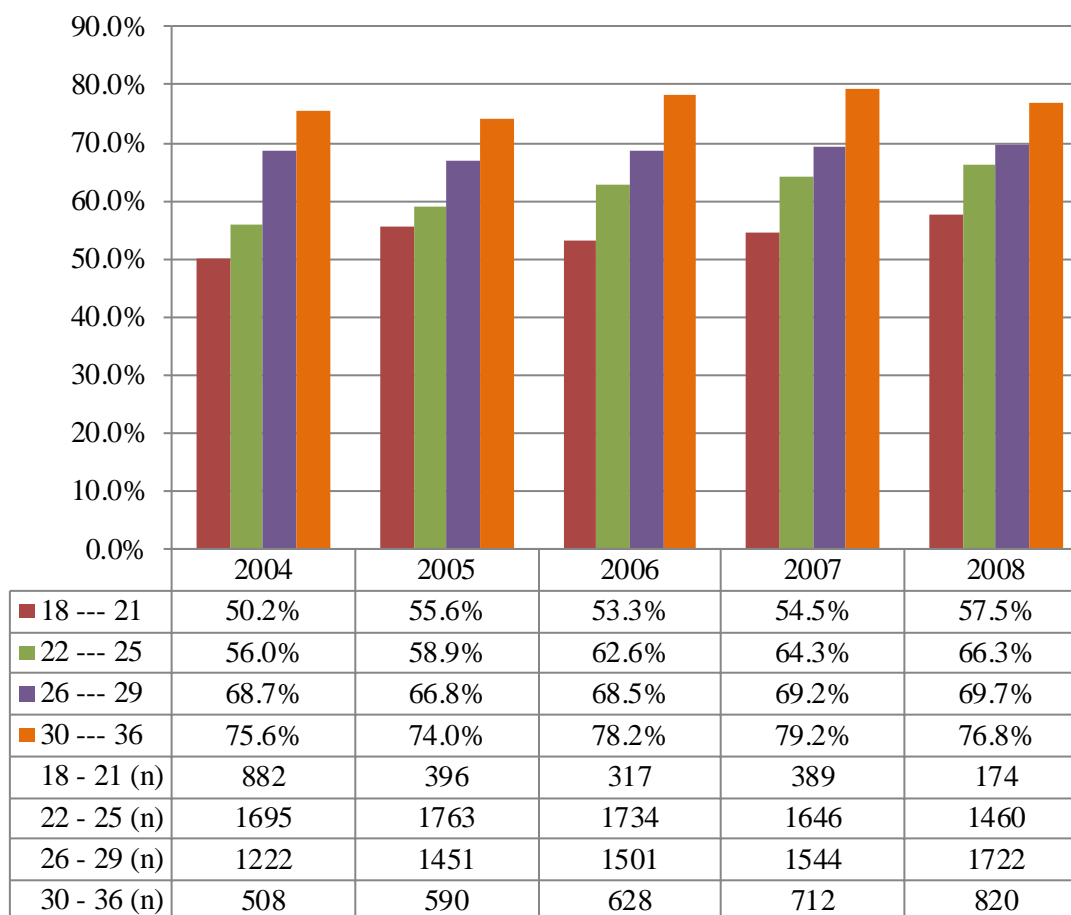
Six year graduation rates indicate that as the ACT Equivalent score increases so does the graduation rate. Students in the highest ACT score range (30-36) had a six year graduation rate of between 75.6 and 79.4 percent while those in the 18-21 range had six year graduation rates between 50.2 and 57.5 percent ([Figure 9](#)). See [Table 4](#) for all rates.

Figure 8. Percent of first-time full-time freshman students who continue to the 2nd year by ACT Equivalent score ranges, Fall cohorts 2004-2013.



Source: OIRA

Figure 9. Graduation Rates of first-time full-time freshman graduating within six years, by ACT Equivalent scores, Fall cohorts 2004-2008.

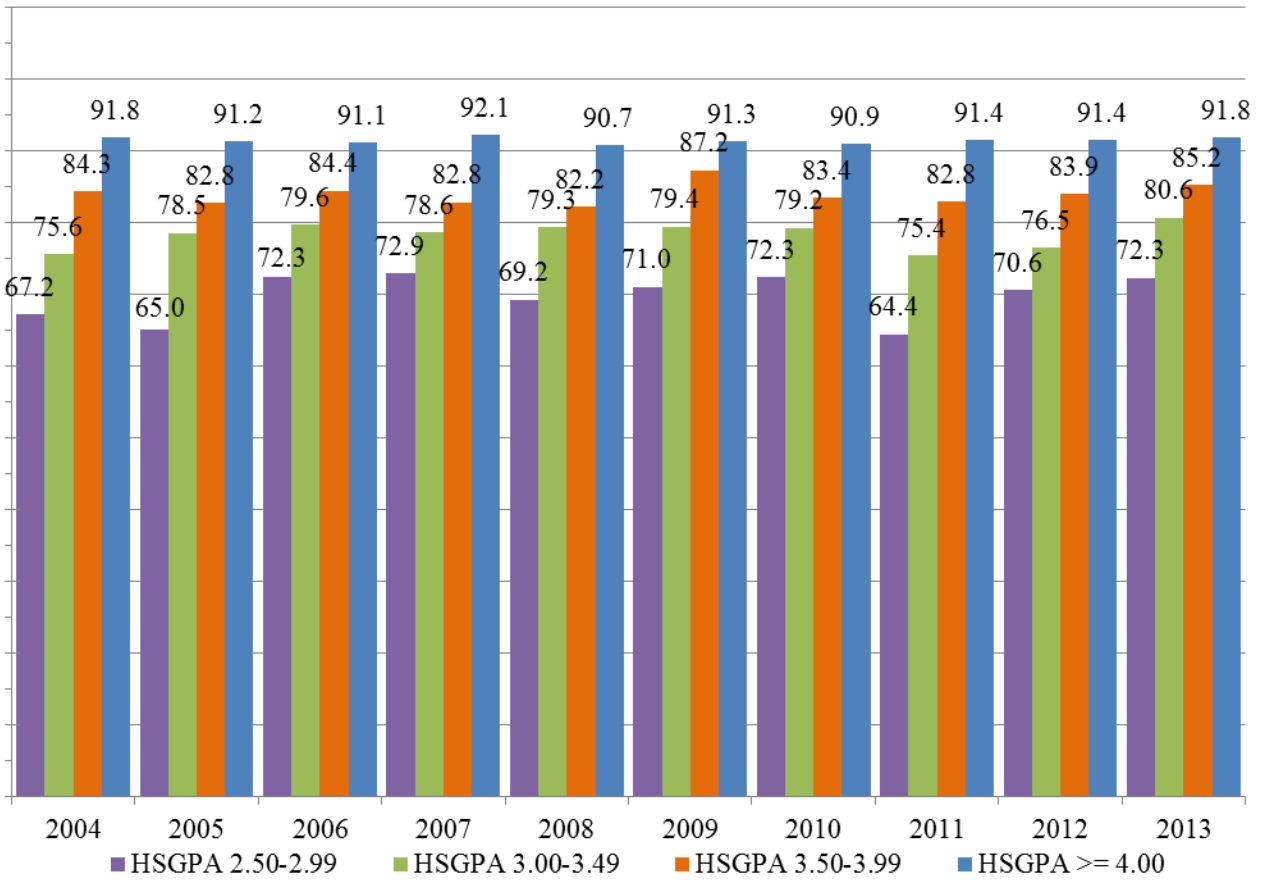


Source:OIRA

Core High School GPA

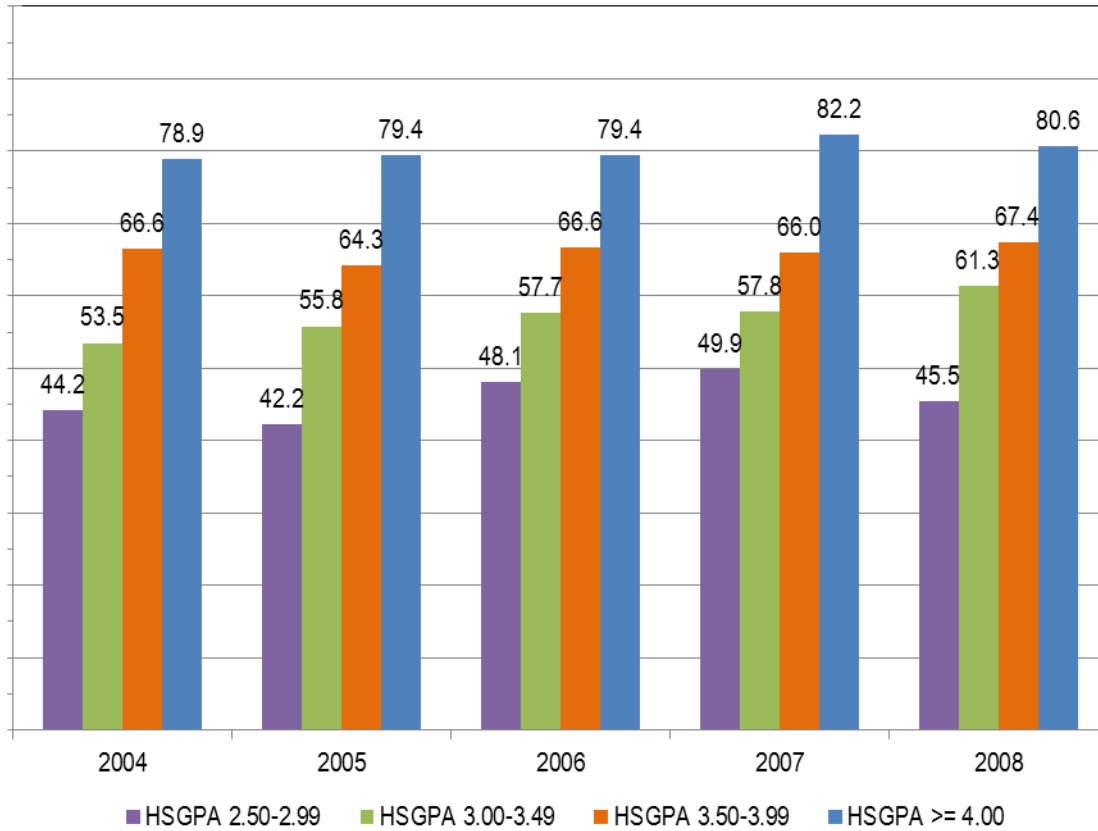
High school grade point average (GPA) is generally a factor in predicting how well students do in college. At UTK, high school GPA is capped at a high of 4.0 for cohorts 2004 – 2007, but uncapped (can be higher than 4.0) starting with the 2008 cohort. At UTK first-time full-time (FTFT) students who come in with a core high school GPA (HSGPA) in the range greater than or equal to 3.0 come back the 2nd fall 35.1% more than students with lower gpas ([Figure 10](#)). At UTK, most FTFT freshman students had a HSGPA greater or equal to a 3.0 (90.2% of FTFF freshman students). UTK FTFT freshman students with a HSGPA greater than or equal to 3.00 came back the 2nd fall 35.1% more than students with lower HSGPA ([Figure 10](#), [Table 5](#)). The six year graduation rate also increases with higher HSGPA, and students with HSGPA's greater or equal 3.00 have six year graduation rates that average 67.8 percent as opposed to those with lower HSGPA than 3.00 which have average six year graduation rate of 44.2 percent ([Figure 11](#), [Table 5](#)).

Figure 10. Retention of first-time full-time freshman (FTFT) that continue to the Fall of the second year by core high school GPA categories, Cohorts 2004-2013.



Source: OIRA

Figure 11. Graduation of first-time full-time freshman (FTFT) that graduate within 6 years by core High School GPA categories, Fall cohorts 2004- 2008.



Source: OIRA

VI. Appendix - Tables

Table 1. Initial number of students in first-time full-time freshman by gender, permanent address, race/ethnicity and minority Status, Fall cohorts 2004-2013.

Cohort Type	Start in 2004	Start in 2005	Start in 2006	Start in 2007	Start in 2008	Start in 2009	Start in 2010	Start in 2011	Start in 2012	Start in 2013	Total (n)	Trend
Overall												
Total	4395	4241	4219	4331	4200	3698	4199	4175	4197	4261	41916	
Gender												
Female	2289	2232	2169	2215	2117	1831	2062	2110	2144	2179	21348	
Male	2106	2009	2050	2116	2083	1867	2137	2065	2053	2082	20568	
Tennessee Residence												
In State	3647	3610	3623	3684	3635	3285	3724	3705	3771	3733	36417	
Out of State	748	631	596	647	565	412	475	470	425	528	5497	
Race/Ethnicity												
Hispanic of any Race	63	75	87	71	81	82	117	118	151	127	972	
Black or African American	440	442	414	387	301	337	322	318	344	318	3623	
White	3717	3513	3549	3640	3637	2982	3416	3374	3357	3401	34586	
Asian or Pacific Islander	119	133	116	123	102	88	118	117	107	130	1153	
American Indian or Alaskan Native	17	17	16	10	19	8	7	9	11	10	124	
Two or More Races						107	140	140	126	118	631	
Nonresident Alien	20	40	20	39	31	48	41	63	22	49	373	
Unknown	19	21	17	61	29	46	38	36	79	108	454	
URM^a	520	534	517	468	401	534	586	585	632	573	5350	
ACT Equivalent Score												
None	27	27	28	24	10	35	15	22	13	24	225	
Less than 18	59	13	11	16	14	20	16	14	20	13	196	
18 - 21	882	396	317	389	174	269	226	183	193	201	3230	
22 - 25	1695	1763	1734	1646	1460	1192	1510	1445	1385	1408	15238	
26 - 29	1222	1451	1501	1544	1722	1429	1568	1624	1668	1612	15341	
30 - 36	508	590	628	712	820	753	864	895	928	1003	7701	
Core HS_GPA												
No GPA	16	14	16	25	22	29	24	20	54	66	286	
Below 2.50	197	96	71	69	28	33	21	11	11	40	577	
2.50 - 2.99	731	528	414	351	302	210	231	149	102	191	3209	
3.00 - 3.49	1237	1028	1024	994	892	709	962	719	693	774	9032	
3.50 - 3.99	1221	1351	1358	1498	1355	1254	1370	1363	1385	1266	13421	
4.00 and Greater	989	1219	1332	1394	1601	1463	1591	1913	1952	1924	15378	

Table 2. Retention and graduation rates for first-time full-time freshman overall, by gender and Tennessee residence status, Fall cohorts 2004-2013.

Cohort Year		2004	2005	2006	2007	2008	2009	2010	2011	2012	2013	Change	Average	Trend
-----Overall-----														
Number in Initial Cohort		4395	4241	4219	4331	4200	3698	4199	4175	4197	4261	-134	4192	
% Continued	to 2 nd Year	79.6	81.7	84.0	83.8	83.8	86.2	84.6	84.8	85.6	86.6	6.9	84.1	
	to 3 rd Year	70.6	74.4	76.3	76.4	78.4	79.8	77.9	78.7	79.6		9.0	76.9	
	to 4 th Year	66.9	69.4	72.1	72.7	72.7	75.6	73.3	73.8			6.9	72.1	
	to 5 th Year	34.3	33.4	34.3	33.6	33.5	30.9	29.0				-5.3	32.7	
% Graduation	4 - Year	30.6	33.7	35.7	36.8	38.9	42.8	42.8				12.2	37.3	
	5 - Year	55.8	58.5	61.5	62.1	64.7	66.0					10.1	61.4	
	6 - Year	60.5	63.2	66.1	67.5	69.3						8.8	65.3	
-----Female-----														
Number in Initial Cohort		2289	2232	2169	2215	2117	1831	2062	2110	2144	2179	-110	2135	
% Continued	to 2 nd Year	81.6	82.3	85.7	84.5	85.3	87.3	85.6	87.2	87.2	88.1	6.5	85.5	
	to 3 rd Year	72.2	76.0	74.0	77.1	79.4	80.9	79.5	81.2	81.1		8.9	77.9	
	to 4 th Year	67.7	69.5	73.5	72.7	73.9	76.7	74.3	75.5			7.8	73.0	
	to 5 th Year	28.0	26.8	27.3	27.5	26.5	23.6	23.3				-4.7	26.1	
% Graduation	4 - Year	37.8	41.7	44.0	43.6	47.9	52.8	50.4				12.6	45.5	
	5 - Year	60.3	62.8	65.6	65.5	69.7	71.7					11.4	65.9	
	6 - Year	63.3	66.2	69.0	69.5	72.5						9.2	68.1	
-----Male-----														
Number in Initial Cohort		2106	2009	2050	2116	2083	1867	2137	2065	2053	2082	-24	2057	
% Continued	to 2 nd Year	77.5	81.1	82.1	83.1	82.3	85.2	83.6	82.4	84.0	84.9	7.4	82.6	
	to 3 rd Year	69.0	72.7	74.0	75.8	77.3	78.6	76.4	76.2	78.0		9.0	75.3	
	to 4 th Year	66.0	69.2	70.6	72.6	71.5	74.6	72.3	72.1			6.1	71.1	
	to 5 th Year	41.2	40.8	41.7	39.9	40.6	38.0	34.5				-6.7	39.5	
% Graduation	4 - Year	22.7	24.9	26.8	29.6	29.8	33.0	35.5				12.8	28.9	
	5 - Year	50.8	53.7	57.1	58.5	59.6	60.3					9.5	56.7	
	6 - Year	57.3	59.8	63.0	65.5	66.0						8.7	62.3	

Table 2. Continued - Retention and graduation rates for first-time full-time freshman overall, by gender and Tennessee residence status, Fall cohorts 2004-2013.

Cohort Year		2004	2005	2006	2007	2008	2009	2010	2011	2012	2013			
		-----In State-----										Change	Average	Trend
Number in Initial Cohort		3647	3610	3623	3684	3635	3285	3724	3705	3771	3733	86	3642	
% Continued	to 2 nd Year	81.0	83.3	84.8	84.1	84.4	87.0	85.1	85.6	86.3	87.1	6.1	84.9	
	to 3 rd Year	60.5	76.3	77.2	77.1	79.0	80.8	78.4	79.6	80.4		19.9	76.6	
	to 4 th Year	68.8	71.3	73.3	73.5	73.4	76.9	73.8	74.7			5.9	73.2	
	to 5 th Year	35.4	34.8	35.3	34.4	34.2	31.9	29.7				-5.7	33.7	
% Graduation	4 - Year	31.6	34.4	35.6	36.7	38.5	42.8	42.5				10.9	37.4	
	5 - Year	57.3	60.1	62.1	62.5	65.0	66.6					9.3	62.3	
	6 - Year	62.3	65.0	66.9	68.2	69.7						7.4	66.4	
		-----Out of State-----										Change	Average	Trend
Number in Initial Cohort		748	631	596	647	565	412	475	470	425	528	-220	550	
% Continued	to 2 nd Year	72.9	73.1	78.7	82.1	79.8	79.6	80.8	78.7	79.8	82.4	9.5	78.8	
	to 3 rd Year	72.7	63.7	70.8	72.8	74.2	71.8	73.7	71.7	72.8		0.1	71.6	
	to 4 th Year	57.7	57.8	64.6	68.3	68.3	65.3	69.1	66.8			9.1	64.7	
	to 5 th Year	27.0	29.3	25.2	28.9	28.7	23.3	23.4				-3.6	26.5	
% Graduation	4 - Year	25.7	29.5	35.9	37.2	41.4	42.5	45.7				20.0	36.8	
	5 - Year	48.3	49.0	57.7	59.5	62.8	60.9					12.6	56.4	
	6 - Year	51.7	52.5	61.1	63.8	66.9						15.2	59.2	

Table 3. Retention and graduation rates for first-time full-time freshman by race/ethnicity and minority Status, Fall cohorts 2004-2013.

Cohort Year		2004	2005	2006	2007	2008	2009	2010	2011	2012	2013	Change Average Trend			
-----American Indian or Alaska Native-----															
Number in Initial Cohort		17	17	16	10	19	8	7	9	11	10	-7	12		
% Continued	to 2 nd Year	64.7	53.0	62.5	70.0	78.9	62.5	71.4	66.7	72.7	70.0	5.3	67.2		
	to 3 rd Year	41.2	47.1	56.3	70.0	78.9	62.5	71.4	66.7	63.6		22.5	62.0		
	to 4 th Year	41.2	41.2	43.8	60.0	68.4	37.5	57.1	55.6			14.4	50.6		
	to 5 th Year	23.5	29.4	37.5	30.0	42.1	37.5	14.3				-9.2	30.6		
% Graduation	4 - Year	11.8	23.5	18.8	30.0	15.8	12.5	42.9				31.1	22.2		
	5 - Year	23.5	29.4	43.8	40.0	47.4	37.5					14.0	36.9		
	6 - Year	35.3	41.2	50.0	50.0	63.2						27.9	47.9		
-----Asian or Pacific Islander-----															
Number in Initial Cohort		119	133	116	123	102	88	118	117	107	130	11	115		
% Continued	to 2 nd Year	79.8	85.0	86.2	87.0	84.3	88.6	93.2	88.9	95.3	94.6	14.8	88.3		
	to 3 rd Year	70.6	75.9	81.0	78.9	76.5	85.2	87.3	85.5	91.6		21.0	81.4		
	to 4 th Year	68.9	72.9	81.9	72.4	67.6	84.1	86.4	78.6			9.7	76.6		
	to 5 th Year	31.1	29.3	37.1	31.7	26.5	40.9	32.2				1.1	32.7		
% Graduation	4 - Year	28.6	38.3	43.1	40.7	44.1	39.8	50.9				22.3	40.8		
	5 - Year	48.7	63.9	69.8	64.2	62.7	70.5					21.7	63.3		
	6 - Year	53.8	68.4	77.6	67.5	70.6						16.8	67.6		
-----Black or African American-----															
Number in Initial Cohort		440	442	414	387	301	337	322	318	344	318	-122	362		
% Continued	to 2 nd Year	81.8	81.9	80.4	78.6	79.4	83.7	82.3	83.3	82.8	88.1	6.2	82.2		
	to 3 rd Year	72.3	73.1	68.6	72.4	73.8	76.6	73.6	78.6	74.7		2.4	73.7		
	to 4 th Year	66.8	65.8	64.3	65.9	68.8	71.2	67.7	70.4			3.6	67.6		
	to 5 th Year	40.5	36.7	31.4	34.1	38.2	39.2	30.1				-10.3	35.7		
% Graduation	4 - Year	23.0	27.4	26.6	25.1	26.6	29.1	34.5				11.5	27.4		
	5 - Year	48.4	50.7	48.6	47.8	52.2	55.8					7.4	50.6		
	6 - Year	55.5	55.9	53.6	54.8	60.1						4.6	56.0		
-----Hispanic of any Race-----															
Number in Initial Cohort		63	75	87	71	81	82	117	118	151	127	64	97		
% Continued	to 2 nd Year	82.5	69.3	74.7	73.2	79.0	87.8	78.6	78.8	80.8	81.1	-1.4	78.6		
	to 3 rd Year	69.8	58.7	64.4	70.4	74.1	79.3	76.1	72.0	76.8		7.0	71.3		
	to 4 th Year	61.9	60.0	57.5	62.0	77.8	76.8	65.0	68.6			6.7	66.2		
	to 5 th Year	28.6	25.3	32.2	19.7	34.6	36.6	31.6				3.0	29.8		
% Graduation	4 - Year	31.7	25.3	20.7	38.0	38.3	39.0	30.8				-1.0	32.0		
	5 - Year	54.0	46.7	41.4	50.7	61.7	65.9					11.9	53.4		
	6 - Year	58.7	53.3	50.6	52.1	69.1						10.4	56.8		

Table 3. Continued - Retention and graduation rates for first-time full-time freshman by race/ethnicity and minority status, Fall cohorts 2004-2013.

Cohort Year		2004	2005	2006	2007	2008	2009	2010	2011	2012	2013	Change	Average	Trend					
-----Two or More Races-----																			
Number in Initial Cohort												107	140	140	126	118	126		
% Continued	to 2 nd Year											76.6	80.0	70.7	77.0	82.2	82.2	77.3	
	to 3 rd Year											67.3	70.7	70.7	73.8	73.8	70.6		
	to 4 th Year											66.4	61.4	65.7		65.7	64.5		
	to 5 th Year											33.6	27.9			27.9	30.8		
% Graduation	4 - Year											30.8	30.7			30.7	30.8		
	5 - Year											53.3							
	6 - Year																		
-----Nonresident Alien-----																			
Number in Initial Cohort		20	40	20	39	31	48	41	63	22	49	29	37						
% Continued	to 2 nd Year	60.0	77.5	65.0	87.2	90.3	87.5	78.0	90.5	90.9	79.6	19.6	80.7						
	to 3 rd Year	55.0	77.5	55.0	84.6	77.4	77.1	70.7	77.8	77.3		22.3	72.5						
	to 4 th Year	55.0	60.0	45.0	76.9	74.2	70.8	70.7	76.2			21.2	66.1						
	to 5 th Year	15.0	30.0	40.0	33.3	48.4	31.3	29.3				14.3	32.5						
% Graduation	4 - Year	35.0	22.5	20.0	35.9	32.3	45.8	36.6				1.6	32.6						
	5 - Year	45.0	37.5	45.0	69.2	67.7	68.8					23.8	55.5						
	6 - Year	50.0	45.0	50.0	71.8	71.0						21.0	57.6						
-----Unknown-----																			
Number in Initial Cohort		19	21	17	61	29	46	38	36	79	108	89	45						
% Continued	to 2 nd Year	64.7	85.7	76.5	85.2	79.3	82.6	94.7	77.8	83.5	88.0	23.3	81.8						
	to 3 rd Year	58.8	76.2	64.7	72.1	69.0	71.7	84.2	66.7	82.3		23.5	71.7						
	to 4 th Year	47.1	61.9	52.9	67.2	62.1	65.2	71.1	63.9			16.8	61.4						
	to 5 th Year	17.6	33.3	23.5	36.1	31.0	30.4	29.0				11.3	28.7						
% Graduation	4 - Year	29.4	23.8	35.3	29.5	34.5	32.6	44.7				15.3	32.8						
	5 - Year	35.3	57.1	52.9	62.3	58.6	58.7					23.4	54.2						
	6 - Year	47.1	57.1	58.8	63.9	62.1						15.0	57.8						
-----White-----																			
Number in Initial Cohort		3717	3513	3549	3640	3637	2982	3416	3374	3357	3401	-316	3459						
% Continued	to 2 nd Year	79.6	82.0	84.8	84.4	84.2	86.8	84.9	85.2	86.2	86.6	7.0	84.5						
	to 3 rd Year	70.8	75.0	77.6	76.9	79.0	80.6	78.2	79.2	80.1		9.3	77.5						
	to 4 th Year	67.2	70.2	73.4	73.7	73.2	76.5	74.2	74.6			7.4	72.9						
	to 5 th Year	34.0	33.4	34.6	33.8	33.1	29.4	28.8				-5.2	32.4						
% Graduation	4 - Year	31.6	34.7	37.0	38.0	40.0	45.2	44.3				12.7	38.7						
	5 - Year	57.2	59.9	63.4	63.7	66.0	67.6					10.3	63.0						
	6 - Year	61.5	64.4	67.7	69.3	70.1						8.6	66.6						

Table 3. Continued - Retention and graduation rates for first-time full-time freshman by race/ethnicity and minority status, Fall cohorts 2004-2013.

		2004	2005	2006	2007	2008	2009	2010	2011	2012	2013	Change	Average	Trend
		-----Under- Represented Minority-----												
Number in Initial Cohort		520	534	517	468	401	534	586	585	632	573	53	535	
% Continued	to 2 nd Year	81.3	79.2	78.9	77.6	79.3	82.6	80.9	81.5	81.0	85.0	3.7	80.7	
	to 3 rd Year	71.0	70.2	67.5	72.0	74.1	74.9	73.4	75.2	74.8		3.8	72.6	
	to 4 th Year	65.4	64.2	62.5	65.2	70.6	70.6	65.5	68.7			3.3	66.6	
	to 5 th Year	38.5	34.8	31.7	31.8	37.7	37.6	29.7				-8.8	34.5	
% Graduation	4 - Year	23.7	27.0	25.3	27.1	28.4	30.7	32.9				9.2	27.9	
	5 - Year	48.5	49.4	47.2	48.1	53.9	56.6					8.1	50.6	
	6 - Year	55.2	55.1	53.0	54.3	62.1						6.9	55.9	

Table 4. Retention and graduation rates for first-time full-time freshman by ACT Equivalent scores, Fall Cohorts 2004-2013.

Cohort Year	2004	2005	2006	2007	2008	2009	2010	2011	2012	2013	Change	Average	Trend	
-----NO SCORE-----														
Number in Initial Cohort	27	27	28	24	10	35	15	22	13	24	-3	23		
% Continued	2nd Year	55.6	66.7	60.7	62.5	70.0	74.3	73.3	72.7	84.6	79.2	23.6	70.0	
	3rd Year	40.7	48.1	50.0	58.3	50.0	65.7	60.0	54.5	76.9	36.2	56.0		
	4th Year	44.4	33.3	42.9	58.3	30.0	51.4	53.3	59.1		14.6	46.6		
% Graduation	4 - Year	22.2	22.2	32.1	8.3	20.0	22.9	26.7				4.4	22.1	
	5 - Year	29.6	29.6	32.1	37.5	40.0	40.0					10.4	34.8	
	6 - Year	33.3	33.3	35.7	41.7	40.0						6.7	36.8	
----- ACT EQUIVALENT LT 18 -----														
Number in Initial Cohort	59	13	11	16	14	20	16	6	10	13	-46	18		
% Continued	2nd Year	71.2	76.9	72.7	93.8	71.4	80.0	75.0	83.3	90.0	76.9	5.7	79.1	
	3rd Year	57.6	53.8	36.4	93.8	71.4	60.0	81.3	66.7	90.0	32.4	67.9		
	4th Year	52.5	61.5	36.4	68.8	71.4	45.0	81.3	66.7		14.1	60.4		
% Graduation	4 - Year	18.6	0.0	18.2	25.0	21.4	25.0	31.3				12.6	19.9	
	5 - Year	44.1	38.5	27.3	62.5	50.0	40.0				-4.1	43.7		
	6 - Year	49.2	46.2	27.3	68.8	57.1					8.0	49.7		
----- ACT EQUIVALENT 18 - 21 -----														
Number in Initial Cohort	882	396	317	389	174	269	226	183	193	201	-681	323		
% Continued	2nd Year	73.6	77.0	79.5	77.6	74.1	78.8	78.8	82.0	72.0	81.1	7.5	77.4	
	3rd Year	62.5	70.7	66.9	67.6	67.8	74.0	69.5	73.8	64.3	1.7	68.6		
	4th Year	58.2	64.1	58.4	61.4	63.8	69.1	64.6	66.7		8.4	63.3		
% Graduation	4 - Year	20.4	25.3	20.8	29.6	29.9	34.6	32.7				12.3	27.6	
	5 - Year	45.5	47.7	48.0	50.1	52.9	59.5					14.0	50.6	
	6 - Year	50.2	55.6	53.3	54.5	57.5						7.3	54.2	

Table 4. Continued - Retention and graduation rates for first-time full-time freshman by ACT Equivalent scores, Fall Cohorts 2004-2013.

Cohort Year	2004	2005	2006	2007	2008	2009	2010	2011	2012	2013				
----- ACT EQUIVALENT 22 - 25 -----											Change	Average	Trend	
Number in Initial Cohort	1695	1763	1734	1646	1460	1192	1510	1445	1385	1408	-287	1524		
% Continued	2 nd Year	76.3	79.2	81.9	81.1	82.0	83.5	80.7	80.6	82.7	85.1	8.8	81.3	
	3 rd Year	66.5	70.3	73.3	73.5	76.0	75.8	72.5	73.9	76.1	9.6	73.1		
	4 th Year	63.3	65.2	69.0	69.4	70.8	71.1	67.4	68.8		5.5	68.1		
% Graduation	4 - Year	26.0	28.8	32.9	32.4	36.5	36.2	36.9				10.9	32.8	
	5 - Year	51.4	54.0	58.3	58.9	61.7	60.2				8.9	57.4		
	6 - Year	56.0	58.9	62.6	64.3	66.3					10.3	61.6		
----- ACT EQUIVALENT 26 - 29 -----											Change	Average	Trend	
Number in Initial Cohort	1222	1451	1501	1544	1722	1429	1568	1624	1668	1612	390	1534		
% Continued	2 nd Year	85.4	84.2	85.1	85.5	84.3	87.6	85.7	86.1	85.9	86.1	0.7	85.6	
	3 rd Year	77.5	77.6	78.3	77.7	78.7	81.6	79.5	79.9	80.0	2.5	79.0		
	4 th Year	73.7	72.8	75.0	74.4	73.2	78.7	75.1	75.3		1.6	74.8		
% Graduation	4 - Year	37.2	37.4	37.5	38.6	37.6	45.5	44.1				6.8	39.7	
	5 - Year	63.6	63.0	63.2	63.7	64.7	68.2				4.6	64.4		
	6 - Year	68.7	66.8	68.5	69.2	69.7					1.0	68.6		
----- ACT EQUIVALENT 30 - 36 -----											Change	Average	Trend	
Number in Initial Cohort	508	590	628	712	820	753	864	895	928	895	387	759		
% Continued	2 nd Year	89.4	87.6	90.4	90.2	88.4	91.2	91.2	90.3	92.5	90.7	1.4	90.2	
	3 rd Year	85.0	83.3	86.3	85.5	84.6	85.8	86.9	85.9	87.4	2.4	85.7		
	4 th Year	80.1	78.7	82.6	83.4	77.6	81.3	82.9	81.1		1.0	81.0		
% Graduation	4 - Year	49.2	46.6	47.1	48.2	48.5	52.6	54.1				4.8	49.5	
	5 - Year	72.6	69.9	75.2	73.3	73.0	75.0				2.4	73.2		
	6 - Year	75.6	74.0	78.2	79.2	76.8					1.2	76.8		

Table 5. Retention and graduation rates for first-time full-time freshman by core GPA Scores, Fall Cohorts 2004-2013.

Cohort Year	2004	2005	2006	2007	2008	2009	2010	2011	2012	2013	Change	Average	Trend	
	----- No GPA Score -----													
Number in Initial Cohort	16	14	16	25	22	29	24	20	54	66	50	29		
% Continued	2 nd Year	70.6	92.9	62.5	84.0	81.8	79.3	83.3	90.0	74.1	81.8	11.2	80.0	
	3 rd Year	62.5	78.6	56.3	81.0	77.3	72.4	66.7	70.0	70.4	7.9	70.6		
	4 th Year	52.9	64.3	43.8	72.0	59.1	55.2	70.8	75.0		22.1	61.6		
	5 th Year	17.6	35.7	25.0	40.0	18.2	20.7	33.3			15.7	27.2		
% Graduation	4 - Year	37.5	28.6	25.0	20.0	22.7	34.5	29.2			-8.3	28.2		
	5 - Year	43.8	57.1	37.5	52.0	45.4	44.8				1.0	46.8		
	6 - Year	50.0	57.1	37.5	56.0	43.5					-6.5	48.8		
	----- Below 2.50 -----										Change	Average	Trend	
Number in Initial Cohort	197	96	71	69	28	33	21	11	11	40	-157	58		
% Continued	2 nd Year	61.9	71.9	78.9	68.1	67.8	72.7	66.7	63.6	45.5	65.0	3.1	66.2	
	3 rd Year	47.7	57.3	62.0	62.3	57.1	63.6	57.1	54.5	45.5	-2.2	56.3		
	4 th Year	43.1	57.3	54.9	52.2	50.0	54.5	47.6	27.3		-15.8	48.4		
	5 th Year	36.0	37.5	38.0	36.2	28.6	36.4	14.3			-21.7	32.4		
% Graduation	4 - Year	7.1	11.5	8.5	11.6	17.9	9.1	23.8			16.7	12.8		
	5 - Year	28.9	33.3	31.0	31.9	42.9	36.4				7.5	34.1		
	6 - Year	34.0	36.5	36.6	39.1	42.9					8.9	37.8		
	----- 2.50 - 2.99 -----										Change	Average	Trend	
Number in Initial Cohort	731	528	414	351	302	210	231	149	102	191	-540	321		
% Continued	2 nd Year	67.2	65.0	72.3	72.9	69.2	71.0	72.3	64.4	70.6	72.3	5.1	69.7	
	3 rd Year	54.4	54.1	60.5	64.1	60.6	63.8	61.0	61.7	63.7	9.3	60.4		
	4 th Year	52.1	50.9	57.6	59.5	56.3	55.2	56.3	56.4		4.3	55.5		
	5 th Year	35.0	33.5	35.3	37.0	35.5	31.4	29.0			-6.0	33.8		
% Graduation	4 - Year	15.7	14.6	18.1	17.7	16.9	21.0	23.4			7.7	18.2		
	5 - Year	39.0	36.5	43.2	41.3	41.4	41.4				2.4	40.5		
	6 - Year	44.2	42.2	48.1	49.9	45.5					1.3	46.0		

Table 5. Continued - Retention and graduation rates for first-time full-time freshman by core GPA Scores, Fall Cohorts 2004-2013.

Cohort Year	2004	2005	2006	2007	2008	2009	2010	2011	2012	2013	Change	Average	Trend	
3.00 - 3.49														
Number in Initial Cohort	1237	1028	1024	994	892	709	962	719	693	774	-463	903		
% Continued	2 nd Year	75.6	78.5	79.6	78.6	79.3	79.4	79.2	75.4	76.5	80.6	5.0	78.3	
	3 rd Year	66.0	68.5	69.5	70.2	72.9	71.2	69.9	67.2	70.6	4.6	69.6		
	4 th Year	61.4	63.5	65.0	66.0	67.9	67.4	64.8	61.6	0.2	64.7			
	5 th Year	36.1	36.3	34.8	35.2	38.8	36.0	32.0	-4.1	35.6				
% Graduation	4 - Year	22.6	23.2	28.5	27.1	28.8	28.9	30.6	8.0	27.1				
	5 - Year	48.6	49.6	52.0	51.8	54.5	53.7	5.1	51.7					
	6 - Year	53.5	55.8	57.7	57.8	61.3	7.8	57.2						
3.50 to 3.99														
Number in Initial Cohort	1,221	1,351	1,358	1,498	1,355	1,254	1,370	1,363	1,385	1,266	45	1342		
% Continued	2 nd Year	84.3	82.8	84.4	82.8	82.2	87.2	83.4	82.8	83.9	85.2	0.9	83.9	
	3 rd Year	76.4	75.9	77.1	74.8	76.5	79.8	76.4	77.0	75.8	-0.6	76.6		
	4 th Year	72.7	70.7	72.8	70.7	70.9	76.3	70.9	71.5	-1.2	72.0			
	5 th Year	36.4	34.0	35.6	35.7	33.6	34.5	28.5	-7.8	34.0				
% Graduation	4 - Year	34.2	34.7	34.6	33.0	36.0	39.3	40.9	6.7	36.1				
	5 - Year	61.8	59.9	62.1	60.6	63.0	65.6	3.8	62.1					
	6 - Year	66.6	64.3	66.6	66.0	67.4	0.8	66.2						
Greater or equal to 4.0														
Number in Initial Cohort	989	1,219	1,332	1,394	1,601	1,463	1,591	1,913	1,952	1,924	323	1538		
% Continued	2 nd Year	91.8	91.2	91.1	92.1	90.7	91.3	90.9	91.4	91.4	91.8	1.1	2.5	
	3 rd Year	86.1	87.9	86.6	86.6	86.8	86.7	87.0	85.8	86.8	0.8	86.7		
	4 th Year	82.5	81.9	82.7	83.9	80.6	82.8	83.4	81.7	-0.8	82.4			
	5 th Year	29.0	30.0	32.1	28.9	30.3	25.4	27.7	-1.3	29.1				
% Graduation	4 - Year	51.7	51.7	49.3	54.1	51.8	56.6	55.2	3.5	52.9				
	5 - Year	75.2	76.0	75.8	77.8	76.9	76.8	1.6	76.4					
	6 - Year	78.9	79.4	79.4	82.2	80.6	1.8	80.1						

VI. Appendix - Tables

Table 1. Initial number of students in first-time full-time freshman by gender, permanent address, race/ethnicity and minority Status, Fall cohorts 2004-2013.

Cohort Type	Start in 2004	Start in 2005	Start in 2006	Start in 2007	Start in 2008	Start in 2009	Start in 2010	Start in 2011	Start in 2012	Start in 2013	Total (n)	Trend
Overall												
Total	4395	4241	4219	4331	4200	3698	4199	4175	4197	4261	41916	
Gender												
Female	2289	2232	2169	2215	2117	1831	2062	2110	2144	2179	21348	
Male	2106	2009	2050	2116	2083	1867	2137	2065	2053	2082	20568	
Tennessee Residence												
In State	3647	3610	3623	3684	3635	3285	3724	3705	3771	3733	36417	
Out of State	748	631	596	647	565	412	475	470	425	528	5497	
Race/Ethnicity												
Hispanic of any Race	63	75	87	71	81	82	117	118	151	127	972	
Black or African American	440	442	414	387	301	337	322	318	344	318	3623	
White	3717	3513	3549	3640	3637	2982	3416	3374	3357	3401	34586	
Asian or Pacific Islander	119	133	116	123	102	88	118	117	107	130	1153	
American Indian or Alaskan Native	17	17	16	10	19	8	7	9	11	10	124	
Two or More Races						107	140	140	126	118	631	
Nonresident Alien	20	40	20	39	31	48	41	63	22	49	373	
Unknown	19	21	17	61	29	46	38	36	79	108	454	
URM^a	520	534	517	468	401	534	586	585	632	573	5350	
ACT Equivalent Score												
None	27	27	28	24	10	35	15	22	13	24	225	
Less than 18	59	13	11	16	14	20	16	14	20	13	196	
18 - 21	882	396	317	389	174	269	226	183	193	201	3230	
22 - 25	1695	1763	1734	1646	1460	1192	1510	1445	1385	1408	15238	
26 - 29	1222	1451	1501	1544	1722	1429	1568	1624	1668	1612	15341	
30 - 36	508	590	628	712	820	753	864	895	928	1003	7701	
Core HS_GPA												
No GPA	16	14	16	25	22	29	24	20	54	66	286	
Below 2.50	197	96	71	69	28	33	21	11	11	40	577	
2.50 - 2.99	731	528	414	351	302	210	231	149	102	191	3209	
3.00 - 3.49	1237	1028	1024	994	892	709	962	719	693	774	9032	
3.50 - 3.99	1221	1351	1358	1498	1355	1254	1370	1363	1385	1266	13421	
4.00 and Greater	989	1219	1332	1394	1601	1463	1591	1913	1952	1924	15378	

Table 2. Retention and graduation rates for first-time full-time freshman overall, by gender and Tennessee residence status, Fall cohorts 2004-2013.

Cohort Year		2004	2005	2006	2007	2008	2009	2010	2011	2012	2013	Change	Average	Trend
-----Overall-----														
Number in Initial Cohort		4395	4241	4219	4331	4200	3698	4199	4175	4197	4261	-134	4192	
% Continued	to 2 nd Year	79.6	81.7	84.0	83.8	83.8	86.2	84.6	84.8	85.6	86.6	6.9	84.1	
	to 3 rd Year	70.6	74.4	76.3	76.4	78.4	79.8	77.9	78.7	79.6		9.0	76.9	
	to 4 th Year	66.9	69.4	72.1	72.7	72.7	75.6	73.3	73.8			6.9	72.1	
	to 5 th Year	34.3	33.4	34.3	33.6	33.5	30.9	29.0				-5.3	32.7	
% Graduation	4 - Year	30.6	33.7	35.7	36.8	38.9	42.8	42.8				12.2	37.3	
	5 - Year	55.8	58.5	61.5	62.1	64.7	66.0					10.1	61.4	
	6 - Year	60.5	63.2	66.1	67.5	69.3						8.8	65.3	
-----Female-----														
Number in Initial Cohort		2289	2232	2169	2215	2117	1831	2062	2110	2144	2179	-110	2135	
% Continued	to 2 nd Year	81.6	82.3	85.7	84.5	85.3	87.3	85.6	87.2	87.2	88.1	6.5	85.5	
	to 3 rd Year	72.2	76.0	74.0	77.1	79.4	80.9	79.5	81.2	81.1		8.9	77.9	
	to 4 th Year	67.7	69.5	73.5	72.7	73.9	76.7	74.3	75.5			7.8	73.0	
	to 5 th Year	28.0	26.8	27.3	27.5	26.5	23.6	23.3				-4.7	26.1	
% Graduation	4 - Year	37.8	41.7	44.0	43.6	47.9	52.8	50.4				12.6	45.5	
	5 - Year	60.3	62.8	65.6	65.5	69.7	71.7					11.4	65.9	
	6 - Year	63.3	66.2	69.0	69.5	72.5						9.2	68.1	
-----Male-----														
Number in Initial Cohort		2106	2009	2050	2116	2083	1867	2137	2065	2053	2082	-24	2057	
% Continued	to 2 nd Year	77.5	81.1	82.1	83.1	82.3	85.2	83.6	82.4	84.0	84.9	7.4	82.6	
	to 3 rd Year	69.0	72.7	74.0	75.8	77.3	78.6	76.4	76.2	78.0		9.0	75.3	
	to 4 th Year	66.0	69.2	70.6	72.6	71.5	74.6	72.3	72.1			6.1	71.1	
	to 5 th Year	41.2	40.8	41.7	39.9	40.6	38.0	34.5				-6.7	39.5	
% Graduation	4 - Year	22.7	24.9	26.8	29.6	29.8	33.0	35.5				12.8	28.9	
	5 - Year	50.8	53.7	57.1	58.5	59.6	60.3					9.5	56.7	
	6 - Year	57.3	59.8	63.0	65.5	66.0						8.7	62.3	

Table 2. Continued - Retention and graduation rates for first-time full-time freshman overall, by gender and Tennessee residence status, Fall cohorts 2004-2013.

Cohort Year		2004	2005	2006	2007	2008	2009	2010	2011	2012	2013				
		-----In State-----										Change	Average	Trend	
Number in Initial Cohort		3647	3610	3623	3684	3635	3285	3724	3705	3771	3733	86	3642		
% Continued	to 2 nd Year	81.0	83.3	84.8	84.1	84.4	87.0	85.1	85.6	86.3	87.1	6.1	84.9		
	to 3 rd Year	60.5	76.3	77.2	77.1	79.0	80.8	78.4	79.6	80.4		19.9	76.6		
	to 4 th Year	68.8	71.3	73.3	73.5	73.4	76.9	73.8	74.7			5.9	73.2		
	to 5 th Year	35.4	34.8	35.3	34.4	34.2	31.9	29.7				-5.7	33.7		
% Graduation	4 - Year	31.6	34.4	35.6	36.7	38.5	42.8	42.5				10.9	37.4		
	5 - Year	57.3	60.1	62.1	62.5	65.0	66.6					9.3	62.3		
	6 - Year	62.3	65.0	66.9	68.2	69.7						7.4	66.4		
		-----Out of State-----										Change	Average	Trend	
Number in Initial Cohort		748	631	596	647	565	412	475	470	425	528	-220	550		
% Continued	to 2 nd Year	72.9	73.1	78.7	82.1	79.8	79.6	80.8	78.7	79.8	82.4	9.5	78.8		
	to 3 rd Year	72.7	63.7	70.8	72.8	74.2	71.8	73.7	71.7	72.8		0.1	71.6		
	to 4 th Year	57.7	57.8	64.6	68.3	68.3	65.3	69.1	66.8			9.1	64.7		
	to 5 th Year	27.0	29.3	25.2	28.9	28.7	23.3	23.4				-3.6	26.5		
% Graduation	4 - Year	25.7	29.5	35.9	37.2	41.4	42.5	45.7				20.0	36.8		
	5 - Year	48.3	49.0	57.7	59.5	62.8	60.9					12.6	56.4		
	6 - Year	51.7	52.5	61.1	63.8	66.9						15.2	59.2		

Table 3. Retention and graduation rates for first-time full-time freshman by race/ethnicity and minority Status, Fall cohorts 2004-2013.

Cohort Year		2004	2005	2006	2007	2008	2009	2010	2011	2012	2013	Change	Average	Trend
-----American Indian or Alaska Native-----														
Number in Initial Cohort		17	17	16	10	19	8	7	9	11	10	-7	12	
% Continued	to 2 nd Year	64.7	53.0	62.5	70.0	78.9	62.5	71.4	66.7	72.7	70.0	5.3	67.2	
	to 3 rd Year	41.2	47.1	56.3	70.0	78.9	62.5	71.4	66.7	63.6		22.5	62.0	
	to 4 th Year	41.2	41.2	43.8	60.0	68.4	37.5	57.1	55.6			14.4	50.6	
	to 5 th Year	23.5	29.4	37.5	30.0	42.1	37.5	14.3				-9.2	30.6	
% Graduation	4 - Year	11.8	23.5	18.8	30.0	15.8	12.5	42.9				31.1	22.2	
	5 - Year	23.5	29.4	43.8	40.0	47.4	37.5					14.0	36.9	
	6 - Year	35.3	41.2	50.0	50.0	63.2						27.9	47.9	
-----Asian or Pacific Islander-----														
Number in Initial Cohort		119	133	116	123	102	88	118	117	107	130	11	115	
% Continued	to 2 nd Year	79.8	85.0	86.2	87.0	84.3	88.6	93.2	88.9	95.3	94.6	14.8	88.3	
	to 3 rd Year	70.6	75.9	81.0	78.9	76.5	85.2	87.3	85.5	91.6		21.0	81.4	
	to 4 th Year	68.9	72.9	81.9	72.4	67.6	84.1	86.4	78.6			9.7	76.6	
	to 5 th Year	31.1	29.3	37.1	31.7	26.5	40.9	32.2				1.1	32.7	
% Graduation	4 - Year	28.6	38.3	43.1	40.7	44.1	39.8	50.9				22.3	40.8	
	5 - Year	48.7	63.9	69.8	64.2	62.7	70.5					21.7	63.3	
	6 - Year	53.8	68.4	77.6	67.5	70.6						16.8	67.6	
-----Black or African American-----														
Number in Initial Cohort		440	442	414	387	301	337	322	318	344	318	-122	362	
% Continued	to 2 nd Year	81.8	81.9	80.4	78.6	79.4	83.7	82.3	83.3	82.8	88.1	6.2	82.2	
	to 3 rd Year	72.3	73.1	68.6	72.4	73.8	76.6	73.6	78.6	74.7		2.4	73.7	
	to 4 th Year	66.8	65.8	64.3	65.9	68.8	71.2	67.7	70.4			3.6	67.6	
	to 5 th Year	40.5	36.7	31.4	34.1	38.2	39.2	30.1				-10.3	35.7	
% Graduation	4 - Year	23.0	27.4	26.6	25.1	26.6	29.1	34.5				11.5	27.4	
	5 - Year	48.4	50.7	48.6	47.8	52.2	55.8					7.4	50.6	
	6 - Year	55.5	55.9	53.6	54.8	60.1						4.6	56.0	
-----Hispanic of any Race-----														
Number in Initial Cohort		63	75	87	71	81	82	117	118	151	127	64	97	
% Continued	to 2 nd Year	82.5	69.3	74.7	73.2	79.0	87.8	78.6	78.8	80.8	81.1	-1.4	78.6	
	to 3 rd Year	69.8	58.7	64.4	70.4	74.1	79.3	76.1	72.0	76.8		7.0	71.3	
	to 4 th Year	61.9	60.0	57.5	62.0	77.8	76.8	65.0	68.6			6.7	66.2	
	to 5 th Year	28.6	25.3	32.2	19.7	34.6	36.6	31.6				3.0	29.8	
% Graduation	4 - Year	31.7	25.3	20.7	38.0	38.3	39.0	30.8				-1.0	32.0	
	5 - Year	54.0	46.7	41.4	50.7	61.7	65.9					11.9	53.4	
	6 - Year	58.7	53.3	50.6	52.1	69.1						10.4	56.8	

Table 3. Continued - Retention and graduation rates for first-time full-time freshman by race/ethnicity and minority status, Fall cohorts 2004-2013.

Cohort Year		2004	2005	2006	2007	2008	2009	2010	2011	2012	2013	Change	Average	Trend
-----Two or More Races-----														
Number in Initial Cohort												118	126	
% Continued	to 2 nd Year						76.6	80.0	70.7	77.0	82.2	82.2	77.3	
	to 3 rd Year						67.3	70.7	70.7	73.8	73.8	70.6		
	to 4 th Year						66.4	61.4	65.7	65.7	64.5			
	to 5 th Year						33.6	27.9	27.9	30.8	30.8			
% Graduation	4 - Year						30.8	30.7	30.7	30.8				
	5 - Year						53.3							
	6 - Year													
-----Nonresident Alien-----														
Number in Initial Cohort		20	40	20	39	31	48	41	63	22	49	29	37	
% Continued	to 2 nd Year	60.0	77.5	65.0	87.2	90.3	87.5	78.0	90.5	90.9	79.6	19.6	80.7	
	to 3 rd Year	55.0	77.5	55.0	84.6	77.4	77.1	70.7	77.8	77.3	22.3	72.5		
	to 4 th Year	55.0	60.0	45.0	76.9	74.2	70.8	70.7	76.2	21.2	66.1			
	to 5 th Year	15.0	30.0	40.0	33.3	48.4	31.3	29.3	14.3	32.5				
% Graduation	4 - Year	35.0	22.5	20.0	35.9	32.3	45.8	36.6	1.6	32.6				
	5 - Year	45.0	37.5	45.0	69.2	67.7	68.8	23.8	55.5					
	6 - Year	50.0	45.0	50.0	71.8	71.0	21.0	57.6						
-----Unknown-----														
Number in Initial Cohort		19	21	17	61	29	46	38	36	79	108	89	45	
% Continued	to 2 nd Year	64.7	85.7	76.5	85.2	79.3	82.6	94.7	77.8	83.5	88.0	23.3	81.8	
	to 3 rd Year	58.8	76.2	64.7	72.1	69.0	71.7	84.2	66.7	82.3	23.5	71.7		
	to 4 th Year	47.1	61.9	52.9	67.2	62.1	65.2	71.1	63.9	16.8	61.4			
	to 5 th Year	17.6	33.3	23.5	36.1	31.0	30.4	29.0	11.3	28.7				
% Graduation	4 - Year	29.4	23.8	35.3	29.5	34.5	32.6	44.7	15.3	32.8				
	5 - Year	35.3	57.1	52.9	62.3	58.6	58.7	23.4	54.2					
	6 - Year	47.1	57.1	58.8	63.9	62.1	15.0	57.8						
-----White-----														
Number in Initial Cohort		3717	3513	3549	3640	3637	2982	3416	3374	3357	3401	-316	3459	
% Continued	to 2 nd Year	79.6	82.0	84.8	84.4	84.2	86.8	84.9	85.2	86.2	86.6	7.0	84.5	
	to 3 rd Year	70.8	75.0	77.6	76.9	79.0	80.6	78.2	79.2	80.1	9.3	77.5		
	to 4 th Year	67.2	70.2	73.4	73.7	73.2	76.5	74.2	74.6	7.4	72.9			
	to 5 th Year	34.0	33.4	34.6	33.8	33.1	29.4	28.8	-5.2	32.4				
% Graduation	4 - Year	31.6	34.7	37.0	38.0	40.0	45.2	44.3	12.7	38.7				
	5 - Year	57.2	59.9	63.4	63.7	66.0	67.6	10.3	63.0					
	6 - Year	61.5	64.4	67.7	69.3	70.1	8.6	66.6						

Table 3. Continued - Retention and graduation rates for first-time full-time freshman by race/ethnicity and minority status, Fall cohorts 2004-2013.

		2004	2005	2006	2007	2008	2009	2010	2011	2012	2013	Change	Average	Trend
		-----Under- Represented Minority-----												
Number in Initial Cohort		520	534	517	468	401	534	586	585	632	573	53	535	
% Continued	to 2 nd Year	81.3	79.2	78.9	77.6	79.3	82.6	80.9	81.5	81.0	85.0	3.7	80.7	
	to 3 rd Year	71.0	70.2	67.5	72.0	74.1	74.9	73.4	75.2	74.8		3.8	72.6	
	to 4 th Year	65.4	64.2	62.5	65.2	70.6	70.6	65.5	68.7			3.3	66.6	
	to 5 th Year	38.5	34.8	31.7	31.8	37.7	37.6	29.7				-8.8	34.5	
% Graduation	4 - Year	23.7	27.0	25.3	27.1	28.4	30.7	32.9				9.2	27.9	
	5 - Year	48.5	49.4	47.2	48.1	53.9	56.6					8.1	50.6	
	6 - Year	55.2	55.1	53.0	54.3	62.1						6.9	55.9	

Table 4. Retention and graduation rates for first-time full-time freshman by ACT Equivalent scores, Fall Cohorts 2004-2013.

Cohort Year 2004 2005 2006 2007 2008 2009 2010 2011 2012 2013											Change	Average	Trend	
-----NO SCORE-----														
Number in Initial Cohort	27	27	28	24	10	35	15	22	13	24	-3	23		
% Continued	2 nd Year	55.6	66.7	60.7	62.5	70.0	74.3	73.3	72.7	84.6	79.2	23.6	70.0	
	3 rd Year	40.7	48.1	50.0	58.3	50.0	65.7	60.0	54.5	76.9	36.2	56.0		
	4 th Year	44.4	33.3	42.9	58.3	30.0	51.4	53.3	59.1	14.6	46.6			
% Graduation	4 - Year	22.2	22.2	32.1	8.3	20.0	22.9	26.7	4.4	22.1				
	5 - Year	29.6	29.6	32.1	37.5	40.0	40.0	10.4	34.8					
	6 - Year	33.3	33.3	35.7	41.7	40.0	6.7	36.8						
----- ACT EQUIVALENT LT 18 -----											Change	Average	Trend	
Number in Initial Cohort	59	13	11	16	14	20	16	6	10	13				-46
% Continued	2 nd Year	71.2	76.9	72.7	93.8	71.4	80.0	75.0	83.3	90.0	76.9	5.7	79.1	
	3 rd Year	57.6	53.8	36.4	93.8	71.4	60.0	81.3	66.7	90.0	32.4	67.9		
	4 th Year	52.5	61.5	36.4	68.8	71.4	45.0	81.3	66.7	14.1	60.4			
% Graduation	4 - Year	18.6	0.0	18.2	25.0	21.4	25.0	31.3	12.6	19.9				
	5 - Year	44.1	38.5	27.3	62.5	50.0	40.0	-4.1	43.7					
	6 - Year	49.2	46.2	27.3	68.8	57.1	8.0	49.7						
----- ACT EQUIVALENT 18 - 21 -----											Change	Average	Trend	
Number in Initial Cohort	882	396	317	389	174	269	226	183	193	201				-681
% Continued	2 nd Year	73.6	77.0	79.5	77.6	74.1	78.8	78.8	82.0	72.0	81.1	7.5	77.4	
	3 rd Year	62.5	70.7	66.9	67.6	67.8	74.0	69.5	73.8	64.3	1.7	68.6		
	4 th Year	58.2	64.1	58.4	61.4	63.8	69.1	64.6	66.7	8.4	63.3			
% Graduation	4 - Year	20.4	25.3	20.8	29.6	29.9	34.6	32.7	12.3	27.6				
	5 - Year	45.5	47.7	48.0	50.1	52.9	59.5	14.0	50.6					
	6 - Year	50.2	55.6	53.3	54.5	57.5	7.3	54.2						

Table 4. Continued - Retention and graduation rates for first-time full-time freshman by ACT Equivalent scores, Fall Cohorts 2004-2013.

Cohort Year 2004 2005 2006 2007 2008 2009 2010 2011 2012 2013														
----- ACT EQUIVALENT 22 - 25 -----											Change	Average	Trend	
Number in Initial Cohort	1695	1763	1734	1646	1460	1192	1510	1445	1385	1408	-287	1524		
% Continued	2 nd Year	76.3	79.2	81.9	81.1	82.0	83.5	80.7	80.6	82.7	85.1	8.8	81.3	
	3 rd Year	66.5	70.3	73.3	73.5	76.0	75.8	72.5	73.9	76.1	9.6	73.1		
	4 th Year	63.3	65.2	69.0	69.4	70.8	71.1	67.4	68.8	5.5	68.1			
% Graduation	4 - Year	26.0	28.8	32.9	32.4	36.5	36.2	36.9	10.9	32.8				
	5 - Year	51.4	54.0	58.3	58.9	61.7	60.2	8.9	57.4					
	6 - Year	56.0	58.9	62.6	64.3	66.3	10.3	61.6						
----- ACT EQUIVALENT 26 - 29 -----											Change	Average	Trend	
Number in Initial Cohort	1222	1451	1501	1544	1722	1429	1568	1624	1668	1612	390	1534		
% Continued	2 nd Year	85.4	84.2	85.1	85.5	84.3	87.6	85.7	86.1	85.9	86.1	0.7	85.6	
	3 rd Year	77.5	77.6	78.3	77.7	78.7	81.6	79.5	79.9	80.0	2.5	79.0		
	4 th Year	73.7	72.8	75.0	74.4	73.2	78.7	75.1	75.3	1.6	74.8			
% Graduation	4 - Year	37.2	37.4	37.5	38.6	37.6	45.5	44.1	6.8	39.7				
	5 - Year	63.6	63.0	63.2	63.7	64.7	68.2	4.6	64.4					
	6 - Year	68.7	66.8	68.5	69.2	69.7	1.0	68.6						
----- ACT EQUIVALENT 30 - 36 -----											Change	Average	Trend	
Number in Initial Cohort	508	590	628	712	820	753	864	895	928	895	387	759		
% Continued	2 nd Year	89.4	87.6	90.4	90.2	88.4	91.2	91.2	90.3	92.5	90.7	1.4	90.2	
	3 rd Year	85.0	83.3	86.3	85.5	84.6	85.8	86.9	85.9	87.4	2.4	85.7		
	4 th Year	80.1	78.7	82.6	83.4	77.6	81.3	82.9	81.1	1.0	81.0			
% Graduation	4 - Year	49.2	46.6	47.1	48.2	48.5	52.6	54.1	4.8	49.5				
	5 - Year	72.6	69.9	75.2	73.3	73.0	75.0	2.4	73.2					
	6 - Year	75.6	74.0	78.2	79.2	76.8	1.2	76.8						

Table 5. Retention and graduation rates for first-time full-time freshman by core GPA Scores, Fall Cohorts 2004-2013.

Cohort Year	2004	2005	2006	2007	2008	2009	2010	2011	2012	2013	Change	Average	Trend	
	No GPA Score													
Number in Initial Cohort	16	14	16	25	22	29	24	20	54	66	50	29		
% Continued	2 nd Year	70.6	92.9	62.5	84.0	81.8	79.3	83.3	90.0	74.1	81.8	11.2	80.0	
	3 rd Year	62.5	78.6	56.3	81.0	77.3	72.4	66.7	70.0	70.4	7.9	70.6		
	4 th Year	52.9	64.3	43.8	72.0	59.1	55.2	70.8	75.0		22.1	61.6		
	5 th Year	17.6	35.7	25.0	40.0	18.2	20.7	33.3			15.7	27.2		
% Graduation	4 - Year	37.5	28.6	25.0	20.0	22.7	34.5	29.2			-8.3	28.2		
	5 - Year	43.8	57.1	37.5	52.0	45.4	44.8				1.0	46.8		
	6 - Year	50.0	57.1	37.5	56.0	43.5					-6.5	48.8		
----- Below 2.50 -----												Change	Average	Trend
Number in Initial Cohort	197	96	71	69	28	33	21	11	11	40	-157	58		
% Continued	2 nd Year	61.9	71.9	78.9	68.1	67.8	72.7	66.7	63.6	45.5	65.0	3.1	66.2	
	3 rd Year	47.7	57.3	62.0	62.3	57.1	63.6	57.1	54.5	45.5	-2.2	56.3		
	4 th Year	43.1	57.3	54.9	52.2	50.0	54.5	47.6	27.3		-15.8	48.4		
	5 th Year	36.0	37.5	38.0	36.2	28.6	36.4	14.3			-21.7	32.4		
% Graduation	4 - Year	7.1	11.5	8.5	11.6	17.9	9.1	23.8			16.7	12.8		
	5 - Year	28.9	33.3	31.0	31.9	42.9	36.4				7.5	34.1		
	6 - Year	34.0	36.5	36.6	39.1	42.9					8.9	37.8		
----- 2.50 - 2.99 -----												Change	Average	Trend
Number in Initial Cohort	731	528	414	351	302	210	231	149	102	191	-540	321		
% Continued	2 nd Year	67.2	65.0	72.3	72.9	69.2	71.0	72.3	64.4	70.6	72.3	5.1	69.7	
	3 rd Year	54.4	54.1	60.5	64.1	60.6	63.8	61.0	61.7	63.7	9.3	60.4		
	4 th Year	52.1	50.9	57.6	59.5	56.3	55.2	56.3	56.4		4.3	55.5		
	5 th Year	35.0	33.5	35.3	37.0	35.5	31.4	29.0			-6.0	33.8		
% Graduation	4 - Year	15.7	14.6	18.1	17.7	16.9	21.0	23.4			7.7	18.2		
	5 - Year	39.0	36.5	43.2	41.3	41.4	41.4				2.4	40.5		
	6 - Year	44.2	42.2	48.1	49.9	45.5					1.3	46.0		

Table 5. Continued - Retention and graduation rates for first-time full-time freshman by core GPA Scores, Fall Cohorts 2004-2013.

Cohort Year	2004	2005	2006	2007	2008	2009	2010	2011	2012	2013	Change	Average	Trend	
3.00 - 3.49														
Number in Initial Cohort	1237	1028	1024	994	892	709	962	719	693	774	-463	903		
% Continued	2 nd Year	75.6	78.5	79.6	78.6	79.3	79.4	79.2	75.4	76.5	80.6	5.0	78.3	
	3 rd Year	66.0	68.5	69.5	70.2	72.9	71.2	69.9	67.2	70.6	4.6	69.6		
	4 th Year	61.4	63.5	65.0	66.0	67.9	67.4	64.8	61.6		0.2	64.7		
	5 th Year	36.1	36.3	34.8	35.2	38.8	36.0	32.0			-4.1	35.6		
% Graduation	4 - Year	22.6	23.2	28.5	27.1	28.8	28.9	30.6			8.0	27.1		
	5 - Year	48.6	49.6	52.0	51.8	54.5	53.7				5.1	51.7		
	6 - Year	53.5	55.8	57.7	57.8	61.3					7.8	57.2		
3.50 to 3.99														
Number in Initial Cohort	1,221	1,351	1,358	1,498	1,355	1,254	1,370	1,363	1,385	1,266	45	1342		
% Continued	2 nd Year	84.3	82.8	84.4	82.8	82.2	87.2	83.4	82.8	83.9	85.2	0.9	83.9	
	3 rd Year	76.4	75.9	77.1	74.8	76.5	79.8	76.4	77.0	75.8	-0.6	76.6		
	4 th Year	72.7	70.7	72.8	70.7	70.9	76.3	70.9	71.5		-1.2	72.0		
	5 th Year	36.4	34.0	35.6	35.7	33.6	34.5	28.5			-7.8	34.0		
% Graduation	4 - Year	34.2	34.7	34.6	33.0	36.0	39.3	40.9			6.7	36.1		
	5 - Year	61.8	59.9	62.1	60.6	63.0	65.6				3.8	62.1		
	6 - Year	66.6	64.3	66.6	66.0	67.4					0.8	66.2		
Greater or equal to 4.0														
Number in Initial Cohort	989	1,219	1,332	1,394	1,601	1,463	1,591	1,913	1,952	1,924	323	1538		
% Continued	2 nd Year	91.8	91.2	91.1	92.1	90.7	91.3	90.9	91.4	91.4	91.8	1.1	2.5	
	3 rd Year	86.1	87.9	86.6	86.6	86.8	86.7	87.0	85.8	86.8	0.8	86.7		
	4 th Year	82.5	81.9	82.7	83.9	80.6	82.8	83.4	81.7		-0.8	82.4		
	5 th Year	29.0	30.0	32.1	28.9	30.3	25.4	27.7			-1.3	29.1		
% Graduation	4 - Year	51.7	51.7	49.3	54.1	51.8	56.6	55.2			3.5	52.9		
	5 - Year	75.2	76.0	75.8	77.8	76.9	76.8				1.6	76.4		
	6 - Year	78.9	79.4	79.4	82.2	80.6					1.8	80.1		