

Retention and Graduation Report: Freshman Cohorts

University of Tennessee, Knoxville

April 2016

Table of Contents**I. Executive Summary****II. List of Figures**

1. Four, five and six year cumulative graduation rates (%) for first-time full-time freshman (FTFT), Fall cohorts 1990 to 2011.
2. First-time full-time freshman (FTFT) retention rates (%), Fall cohorts 2000-2014.
3. Retention and graduation rates (%) for first-time full-time freshman (FTFT) by gender, Fall cohorts 2006-2014.
4. Retention and graduation rates (%) for first-time full-time freshman (FTFT) by in-state residence status, Fall cohorts 2006-2014.
5. Retention rates (%) for first-time full-time freshman (FTFT) by race/ethnicity, Fall cohorts 2006-2014.
6. Cumulative six year graduation rates for first-time full-time freshman (FTFT) by race/ethnicity, Fall cohorts 2006 – 2009.
7. Cumulative six year graduation rates and rates of students who continue to 2nd fall for under-represented minorities (URM) FTFT students versus overall first-time full-time students, Fall cohorts 2006 – 2014.
8. Cumulative six year graduation rates and retention rates of students who continue to 2nd Fall for under-represented minority (URM) male and female FTFT students, Fall cohorts 2006 – 2014.
9. Retention rates (%) of first-time full-time freshman students who continue to the 2nd Fall by ACT Equivalent scores , Fall cohorts 2006-2014.
10. Cumulative six year graduation rates (%) of FTFT freshman, by ACT Equivalent scores, Fall cohorts 2006-2009.
11. Cumulative graduation rates (%) for FTFT freshman males and females by ACT Equivalent Scores, Fall cohorts 2006-2011.

12. Retention rates (%) of first-time full-time freshman (FTFT) that continue to the 2nd fall by core high school GPA categories, Fall cohorts 2006-2014.
13. Cumulative six year graduation rates (%) of FTFT freshman by core high school GPA categories, Fall cohorts 2006-2009.
14. Cumulative four and six year graduation rates (%) for FTFT freshman males and females by high school core GPA for cohorts Fall cohorts 2006-2011.

III. Introduction

IV. Trends in Retention and Graduation

V. Appendix: Tables

1. Initial number of students in first-time full-time freshman cohorts by gender, permanent address, race/ethnicity and minority status, Fall Cohorts 2006-2014.
2. Retention and graduation rates for first-time full-time freshman overall, by gender and Tennessee residence status, Fall Cohorts 2006-2014.
3. Retention and graduation rates for first-time full-time freshman by race/ethnicity and minority status, Fall Cohorts 2006-2014.
4. Retention and graduation rates for URM first-time full-time females and males, Fall cohorts 2006-2014.
5. Retention and graduation rates for first-time full-time freshman by ACT Equivalent scores, Fall Cohorts 2006-2014.
6. Retention and graduation rates for first-time full-time freshman by core GPA Scores, Fall Cohorts 2006-2014.
7. Initial number of students in first-time part-time freshman by gender, permanent address, race/ethnicity and minority Status, Fall cohorts 2006-2014.
8. Retention and graduation for first-time full-time freshman by gender within race, Fall cohorts 2006-2014.
9. Retention and graduation for first-time full-time freshman by gender within ACT equivalent score, Fall cohorts 2006-2014.
10. Retention and graduation for first-time full-time freshman by gender within core HSGPA, Fall cohorts 2006-2014.

Executive Summary

Retention and graduation trends and rates are examined for first-time full-time (FTFT) freshman cohorts at the University of Tennessee, Knoxville (UTK). Currently we assess retention at the Fall of each year. Tracking starts with the first fall students are enrolled and then we track the students from Fall to Fall of each year. Each fall students in the cohort either continue, graduate, stop out or withdraw from the university.

Graduation is counted for the fall, spring and summer semesters following the year being tracked. An one year graduation rate is calculated by summing the graduates for the following fall spring and summer following the tracked year and dividing by the number of students in the tracked cohort. Each additional years graduates are added to the first year and divided by the tracked cohort for a cumulative graduation rate.

Retention and graduation trends and rates are then calculated by subgroups including: gender, residency, race/ethnicity, ACT Equivalent Scores, High School grade point average (HSGPA). The part-time population is very small, with 25 or less observations in any cohort, consequently they are not summarized in this report (Appendix: Table 8).

Overall Trends in Retention and Graduation

- First-time full-time (FTFT) freshman UTK cohort retention rates have increased from Fall 2000 to Fall 2014. Rates for continued to 2nd, 3rd and 4th year increased by 6.3, 9.9 and 11.3 percent, respectively (Figure 2).
- FTFT UTK cohort graduation rates have increased from 1990 to 2011. FTFT freshman four year graduation rates increased by 21.9 percent. Those who graduated within six years increased their graduation rates by 15.6 percent. The majority of this gain occurred after 2004 (initiation of the Lottery and the Student Success Center) with the four year rate increasing by 14.9 percent (68% of total change) and the six year rate increasing by 9.8 percent (93% of total change) (Figure 1).
- Four, five and six year overall graduation rates have increased in the last ten cohort years (2002 to 2011) by 15.5, 10.4 and 10.5 percent, respectively (Figure 1).

Gender

- Females have higher average four, five and six year graduation rates (49.0 , 68.4 and 71.3 percent , respectively) when compared to males (31.7, 59.2, and 65.3 percent, respectively) for the 2006 to 2011 cohorts (Figure 3, Appendix: Table 2).
- For cohort years 2006-2014 females average a slightly better rate (86.4 %) of completing the first year and re-enrolling in the fall of the second year than males (83.4 %), (Figure 3, Appendix: Table 2).

Residency

- On average, In-State FTFT freshman students perform better than Out-of-State students across the last nine cohort years. The FTFT students who are in the In-State group continue to the second year (85.6%) at a higher rate than Out-of-State group (80.3%) (Figure 4, Appendix: Table 2).
- Students in the In-State group have higher average six year graduation rates (69.0%) than those students who are in the Out-of-State group (64.0%) (Figure 4, Appendix: Table 2).

Ethnicity and Race

UTK uses the Federal definition for race/ethnicity, which separates out non-citizens into a non-resident alien group. US citizens are divided between Hispanics vs Non-Hispanics. The Non-Hispanics are further categorized by race. The overall reporting groups are nonresident Aliens, Hispanic of any race, Black or African American, Asian or Pacific Islander, American Indian or Alaska Native, White, Two or More Races and unknown.

- Whites account for 81.6% of the FTF freshman.
- Blacks, Asians or Pacific Islanders and Hispanics make up the next largest three groups at 8.2 , 2.7 and 2.7 percent of population.
- In the cohort years of 2006 to 2014 Asian or Pacific Islander students continue to the second Fall at a higher average rate of (90.1%) than other students (Figure 5, Appendix: Table 4).
- In 2011 and 2014 Non-resident Aliens had the highest 2nd year continuation rate, 90.5% and 93%, respectively (Appendix: Table 3).
- Overall, Asian or Pacific Islander students have the highest six year graduation rate at 77.2 percent. Whites' average graduation across cohort years is 69.3 percent (Figure 6, Appendix: Table 3).

Under-Represented Minorities (URM)

Under-Represented Minorities (URM) includes Black or African Americans, Hispanics of any race, Two or More Races and American Indian/Alaska Natives.

- There was a decrease in retention for the 2014 URM FTFT freshman cohort, with students continuing to the second Fall at a slightly lower rate (79.5%) than UTK students overall (84.6%) (Figure 7, Appendix: Table 3).
- Across cohorts 2006-2014 the FTFT URM freshman cohort continues to the 2nd Fall on average at 80.7 percent while the overall FTFT UTK freshman average is 84.9 percent (Figure 7, Appendix: Table 4, Table 3).
- Six year graduation rates for the URM cohort average 57.7% while the overall first time full time (FTFT) freshman cohort had a six year graduation rate of 68.3% (Appendix: Table 4, Table 3).
- Females in the FTFT freshman URM cohort perform better in both retention and graduation. However the discrepancy in performance between males and females is greater in the graduation rates (Figure 8).
- The FTFT freshman URM Cohort for both genders consistently shows a drop in students continuing to the 2nd Fall in 2014 from 86.4 percent in the Fall of 2013 to 82.3 percent in 2014 . (Figure 8).
- Across cohorts 2006-2014 URM female FTFT freshman students continue to 2nd fall at a rate of 82.2 percent as opposed to males at 78.8 percent.
- The FTFT URM female students who graduate within six years increases in each cohort year with an average across cohort years of 61.5 percent . Males however, have a much more variable six year graduation rates among cohort years 2006-2009 with rates of 50.2, 49.0, 58.8, and 54.2 percent, respectively. The overall average for males across cohort years is 53.1 percent, (Figure 8, Appendix: Table 4).

ACT Equivalent Scores

ACT Equivalent is the higher of the Comprehensive ACT score or Total SAT score converted to ACT scale.

- FTFT Students at UTK most often have ACT Equivalent scores between 22 and 36 (93.6% of FTFT freshman students) (Appendix: Table 5).
- FTFT freshman with ACT Equivalent scores equal or greater than 22 are fairly evenly divided between genders (Appendix: Table 9).

- For the FTFT students continuing to their 2nd year there is generally an increase in retention with an increase in ACT Equivalent scores (Figure 9).
- Across the 2006-2009 cohort years, students continue to the 2nd Fall on average at a rate of 81.9 percent for the 22-25 ACT score group and at 85.8 percent for the 26-29 ACT score group (Figure 9, Appendix: Table 5).
- Female students continue to the 2nd Fall at a higher rate than males at all ACT Equivalent scores (Appendix: Table 9).
- FTFT freshman students with ACT Equivalent scores between 30 and 36 had a retention rate (continue to 2nd Fall) increase on average of 4.9 percent above students with scores between 26-29 in the years from 2006 to 2014 (Figure 9, Appendix: Table 5).
- As ACT Equivalent scores increase, so does the six year cumulative graduation rate for FTFT freshman in cohorts 2006-2009 (Figure 10).
- Female FTFT freshman students at any ACT score graduate within four or six years at a rate higher than males. FTFT freshman females with ACT Equivalent scores between 30 and 36 had a six year cumulative graduation rate across cohort years of 83.4 percent while the males had a rate of 74.8 percent (Figure 11 Appendix: Table 9).

High School Grade Point Average

- The majority of FTFT freshman students from 2006-2014 have a core high school grade point average greater than or equal to 3.5 (72.0 percent of students) (Appendix: Table 1).
- Females make up 54.4 of the FTFT freshman cohort that have a core GPA above 3.5 (Appendix: Table 10).
- FTFT freshman who have a core high school grade point average of 3.5 or above have a greater chance of coming back the 2nd Fall than students with scores lower than 3.5 (Figure 12 Appendix: Table 6).
- Females and males with a core GPA above 3.5 across cohort years 2006-2014 continue to the 2nd Fall at about the same rate, 88 and 87.6 percent, respectively (Appendix: Table 10).
- Six year cumulative graduation rates consistently increased with higher core high school GPA for individual cohort years; however, these overall cohorts graduation rates fluctuate across cohort years. (Figure 13, Appendix: Table 6).
- Males and females perform more similarly in six year cumulative graduation rates than in four year rates. Females with core high school GPA of 3.5-3.99 across cohort years have four year rates of 45.4 percent as opposed to male students at 29.1 percent. For cumulative six year rates females have a rate of 68.3 percent and males a rate of 66.8 percent across cohort years(Figure 14 , Table 10).

Introduction

Retention and graduation rates are two metrics used to assess the success of students. Students are followed from the day they first enroll to completion of their first degree. At the University of Tennessee, Knoxville (UTK), students are followed each Fall of their undergraduate study. The student's cohort (group of students classified by certain distinguishing characteristics) is comprised of all students entering college for the first time at a freshman level and who are attending full time (FTFT cohort). The first Fall is the initial cohort and every subsequent Fall after that a student either continues with his/her studies (retained), graduates or stops out / drops out. Students who attend the summer prior and are enrolled full-time are included in these Fall cohorts.

Graduation is counted for the fall, spring and summer semesters following the year being tracked. An one year graduation rate is calculated by summing the graduates for the following fall spring and summer following the tracked year and dividing by the number of students in the tracked cohort. Each additional years graduates are added to the first year and divided by the tracked cohort for a cumulative graduation rate.

At the University of Tennessee most of the first-time freshman are full time (99.6%) with 12 or more credit hours. First-time part time freshman have an average of 16 people in a cohort with 25 students as a maximum and 10 students as a minimum (Appendix: Table 2), so this report will only focus on the FTFT freshman.

The cohorts are broken down by gender, race/ethnicity, minority status, Tennessee resident status, ACT Equivalent scores and high school grade point averages. The data is summarized to describe trends in the cohorts over time. Most trends will be analyzed over the last nine years (2006-2014) cohorts. This report emphasizes the rates of FTFT cohorts returning to the second year and the FTFT students who graduate within six years.

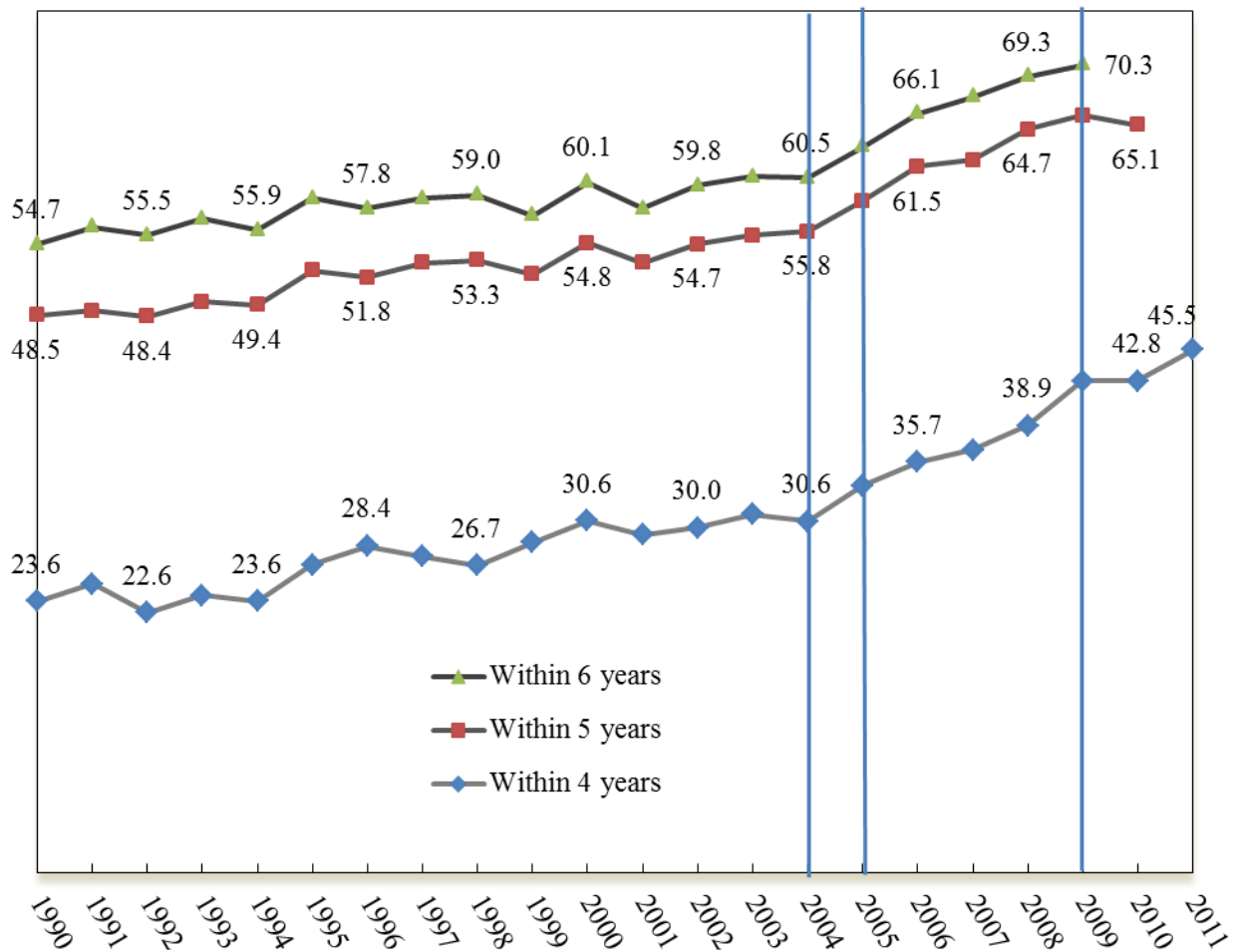
Overall Trends in Retention and Graduation

At the University of Tennessee, Knoxville, there has been a gradual increase in four, five and six year cumulative graduation rates for first-time full-time freshman over the last two decades with a sharper increase (9.8%) in six year cumulative graduation rate for the recent (2004-2009) cohorts (Figure 1). The four year rate increased by 14.9 percent for the FTFT freshman cohorts 2004 – 2009 (Figure 1).

FTFT freshman rates for 2nd Fall enrollment (continue to 2nd Fall) fluctuate from year to year. From 2000 to 2004 there was a slight upward trend in the second Fall continuation rate (78%). After 2004, the upward trend is more pronounced and the current ten year average rate is 84.3 percent (Figure 2).

Some factors that may have affected retention and graduation in the last decade include: the beginning of the lottery scholarship in 2004; creation of the Student Success Center in 2005; and a one-year change in criteria for the Merit Scholarship in 2009 which resulted in a decrease in freshman enrollment by 500 students.

Figure 1. Four, five and six year cumulative graduation rates (%) for first-time full-time (FTFT), freshman Fall cohorts 1990 to 2011.

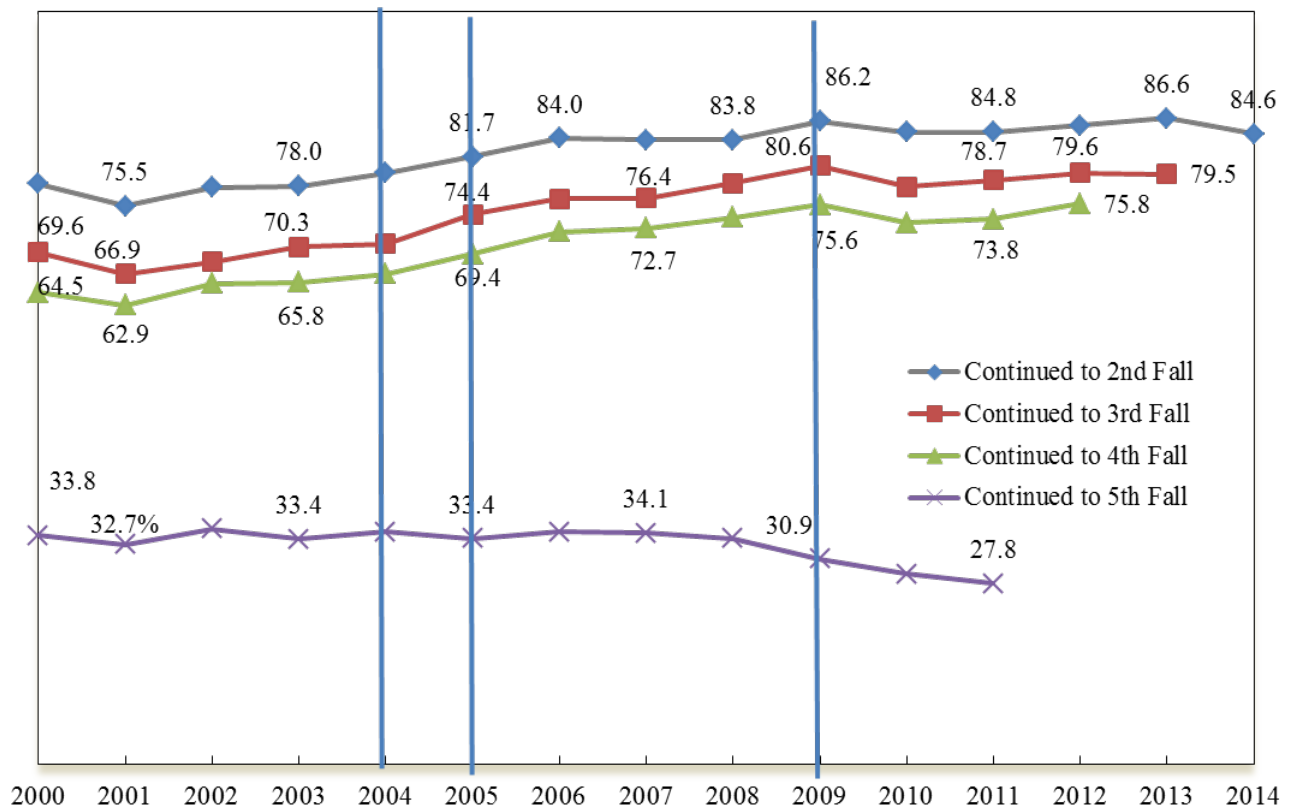


Events

- 2004 - 1st Year of Lottery
 - 2005 - Student Success Center
 - 2009 - Merit Scholarship changed in 2009 & enrollment increased
- Note: Graduation is cumulative

Source: OIRA

Figure 2. First-time full-time freshman (FTFT) retention rates (%), Fall cohorts 2000 to 2014.



Events

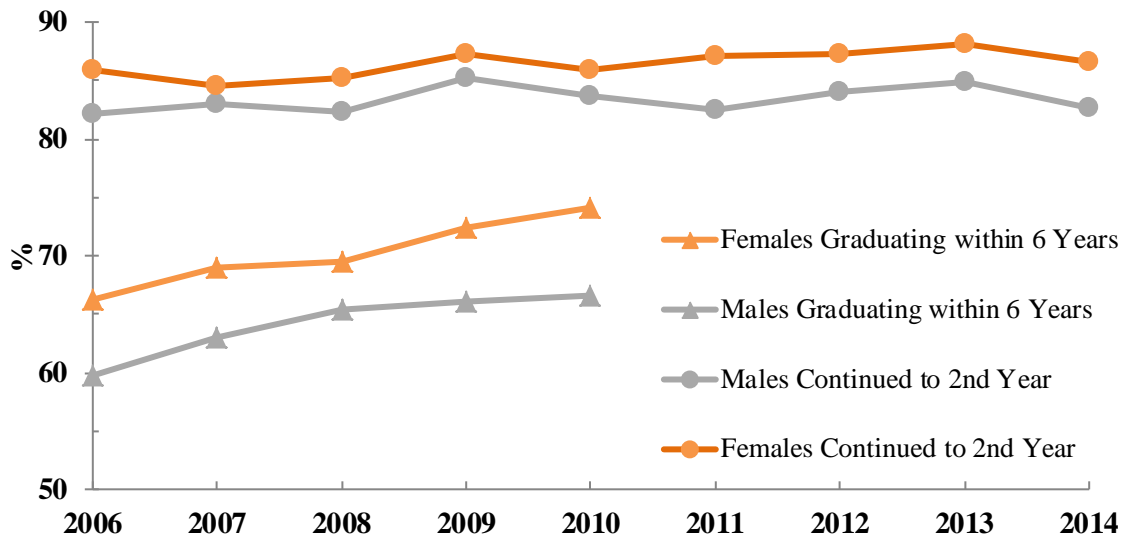
2004 - 1st Year of Lottery
 2005 - Student Success Center
 2009 - Merit Scholarship changed in 2009
 & enrollment increased

Source: OIRA

Gender

Examination of the cohorts by gender reveals that women graduate at higher rates than men. The four year average cumulative rates are around 17.3% higher for women than they are for men for the 2006-2014 cohorts (Figure 3, Appendix: Table 2). The rates are closer for six year cumulative graduation rates with women graduating only at a 6% higher rate. Retention rates are closer between genders with men continuing in the Fall of the 2nd year at 83.4 percent on average versus females at 86.4 percent (Figure 3). The 2014 cohort shows the same down turn in 2nd year continuation for both sexes that the overall UTK FTFT freshman students trend shows (Figure 3).

Figure 3. Retention and graduation rates (%) for first-time full-time freshman (FTFT) by gender, Fall cohorts 2006-2014.



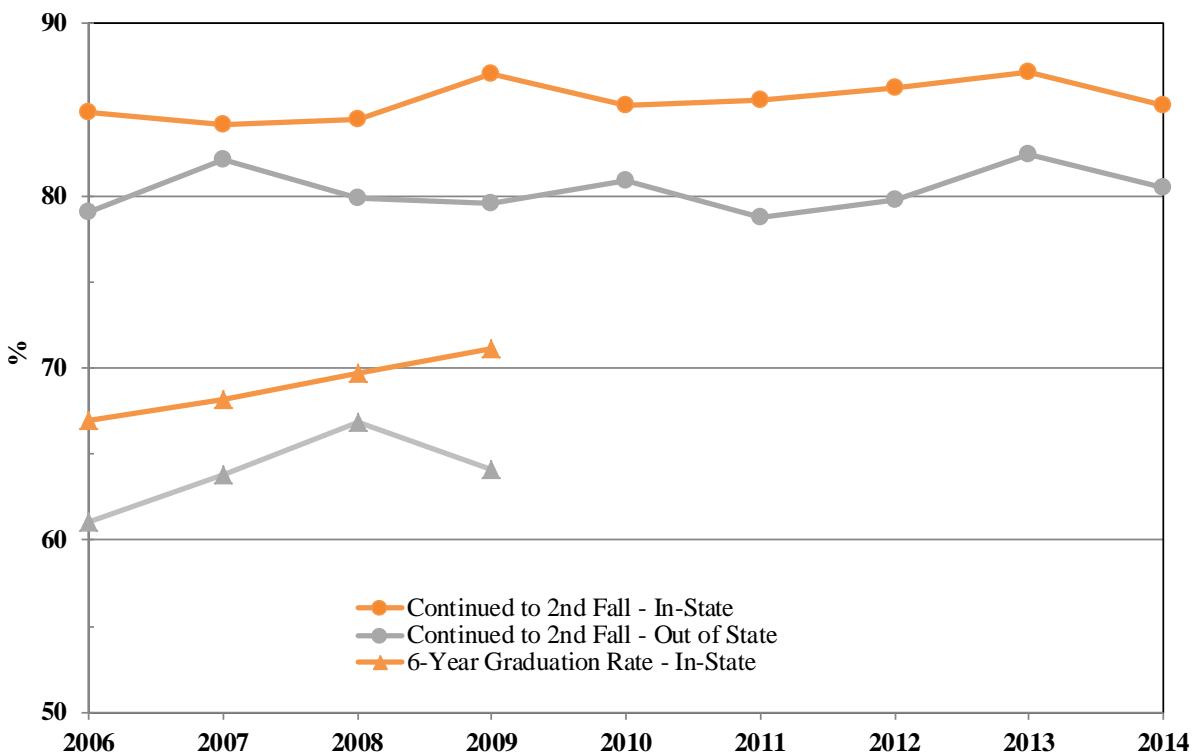
Cohort year	2006	2007	2008	2009	2010	2011	2012	2013	2014	Average
	-----Male-----									
Number in Initial Cohort	2,050	2,116	2,083	1,867	2,137	2,065	2,053	2,082	2,339	2,088
	-----%-----									
Continued to 2nd Fall	82.1	83.1	82.3	85.2	83.8	82.4	84.0	84.9	82.6	83.4
Graduation 4 - Year	26.8	29.6	29.8	33.0	35.5	35.6				31.7
Graduation 6 - Year	63.0	65.5	66.1	66.7						65.3
	-----Female-----									
Number in Initial Cohort	2169	2215	2117	1831	2062	2110	2144	2,179	2,350	2,131
	-----%-----									
Continued to 2nd Fall	85.8	84.5	85.3	87.3	85.8	87.2	87.2	88.1	86.6	86.4
Graduation 4 - Year	44.1	43.6	47.9	52.8	50.4	55.2				49.0
Graduation 6 - Year	69.0	69.5	72.5	74.1						71.3

Source: OIRA

In-State/Out-of-State Students

Students who are United States citizens or permanent residents and list Tennessee as their permanent address are considered In-State students. All others are considered Out-of-State students (including non-resident Aliens). The retention trend for In-State students continuing to the second year has modestly increased over the last nine years, with an average rate of 85.6 percent (Figure 4, Appendix: Table 3). The Out-of-State retention rate in the past nine years averages 80.3 percent. In-State students continue to the 2nd year 5.3 percent more than their Out-of-State counterparts. The In-State six-year cumulative graduation rate has been gradually increasing from 66.9 percent in 2006 to 71.1 percent for the 2009 cohort. The trend for the Out-of-State students is a little more variable but makes a three percent gain in six year cumulative graduation rates for the 2006 - 2009 cohorts (Figure 4, Appendix: Table 3).

Figure 4. Retention and graduation rates (%) for first-time full-time freshman (FTFT) by in-state residence status, Fall cohorts 2006-2014.



Cohort Year	2006	2007	2008	2009	2010	2011	2012	2013	2014	Average
	----- In State -----									
	----- % -----									%
Continued to 2nd Fall	84.8	84.1	84.4	87.0	85.3	85.6	86.3	87.1	85.3	85.6
Graduation 4 - Year	35.7	36.7	38.5	42.8	42.5	45.4				40.3
Graduation 6 - Year	66.9	68.2	69.7	71.1						69.0
	----- Out of State -----									
	----- % -----									%
Number in Initial Cohort	596	647	565	412	475	470	426	528	682	533
Continued to 2nd Fall	79.0	82.1	79.8	79.6	80.8	78.7	79.8	82.4	80.5	80.3
Graduation 4 - Year	35.9	37.2	41.4	42.5	45.7	46.6				41.6
Graduation 6 - Year	61.1	63.8	66.9	64.1						64.0

Source: OIRA

Race/Ethnicity

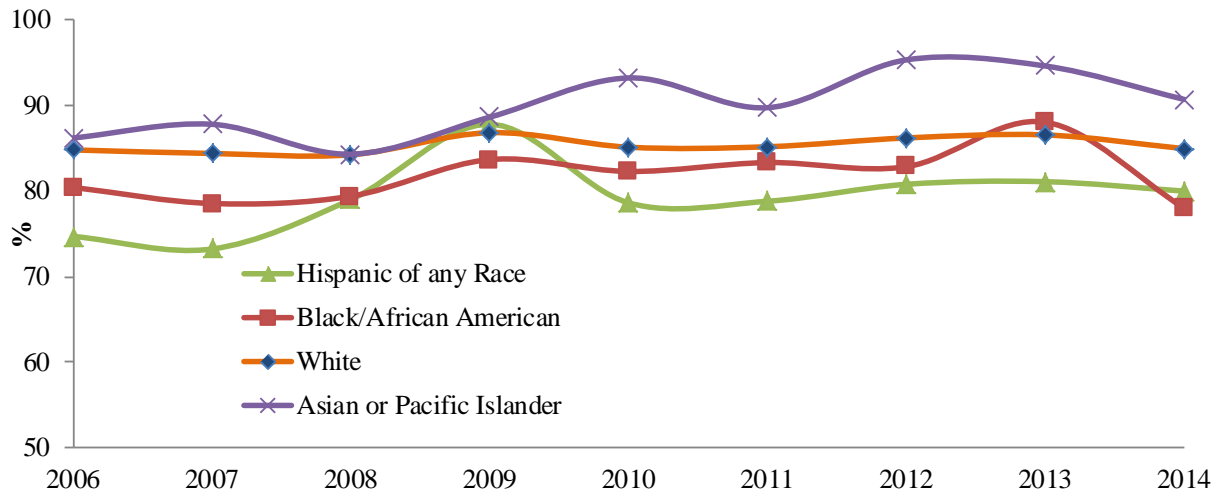
UTK uses the Federal definition for race/ethnicity, which separates out non-citizens into a non-resident alien group. US citizens are first divided between Hispanic vs Non-Hispanic ethnicity. The Non-Hispanics are categorized by race. The overall reporting groups are Non-resident Aliens, Hispanic of any race, Black or African American, Asian or Pacific Islander, American Indian or Alaska Native, White, Two or More Races and Unknown.

Whites account for 81.6 percent of the FTFT freshman followed distantly by Blacks or African Americans (8.2%), Asian or Pacific Islanders (2.7%), Hispanics of any race (2.7%), Two or more races (2.1%), Unknown (1.4%), Non-Resident Alien (1.0 %) and American Indian or Alaska Native (0.3%).

Comparison across cohort years by race/ethnicity yields a 2nd year average continuation rate for Asian/Pacific Islanders, Whites and Blacks/African Americans of 90.1, 85.4 and 81.8 percent, respectively (Appendix: Table 3). The category of Two or More races was started in 2009 and is not included in the graph. Low numbers of American Indian / Alaska Natives in all cohorts led to exclusion from the graph. Generally the year-to-year variability is higher for Asian / Pacific Islanders, Hispanics, and Blacks / African Americans than for White students (Figure 5). All data is shown in Table 3 of the Appendix with trends.

Across the cohorts 2006-2009, Asians / Pacific Islanders have the highest average six year cumulative graduation rates (73.2%), followed by Whites (69.7%). Hispanics and African Americans or Blacks have the lowest six year cumulative graduation rates at 60.6 percent and 57.3 percent, respectively.

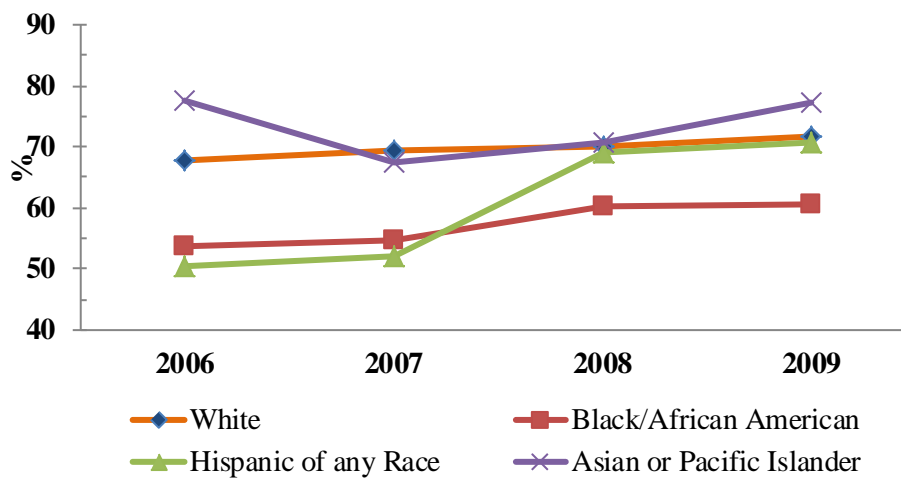
Figure 5. Retention rates for first-time full-time freshman (FTFT) by race/ethnicity, Fall cohorts 2006-2014.



	2006	2007	2008	2009	2010	2011	2012	2013	2014	Average
-----% Continued to 2nd Fall-----										
Hispanic of any Race	74.7	73.2	79.0	87.8	78.6	78.8	80.8	81.1	80.0	79.3
Black or African American	80.4	78.6	79.4	83.7	82.3	83.3	82.8	88.1	78.0	81.8
White	84.8	84.4	84.2	86.8	85.1	85.2	86.2	86.6	85.0	85.4
Asian or Pacific Islander	86.2	87.8	84.3	88.6	93.2	89.7	95.3	94.6	90.7	90.1

Source: OIRA

Figure 6. Cumulative six year graduation rates for first-time full-time freshman (FTFT) by race/ethnicity, Fall cohorts 2006 – 2009.



Cohort Year	2006	2007	2008	2009	Average
Hispanic of any Race	50.6	52.1	69.1	70.7	60.6
Black or African American	53.6	54.8	60.1	60.5	57.3
White	67.7	69.3	70.1	71.8	69.7
Asian or Pacific Islander	77.6	67.5	70.6	77.3	73.2

Source: OIRA

Minority Status

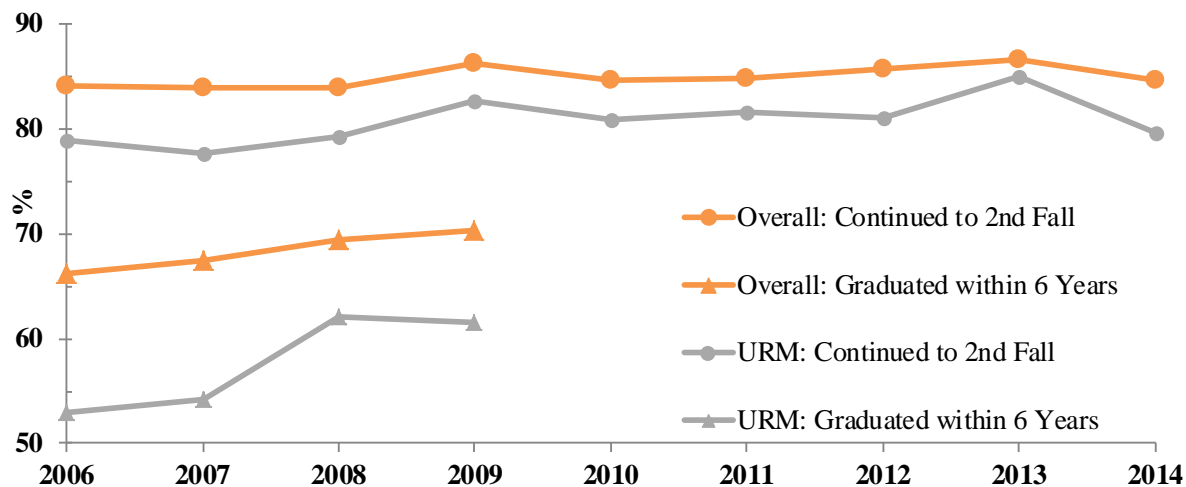
Under-Represented Minorities (URM) at UTK is comprised of Blacks or African Americans, Hispanics, American Indians or Alaska Natives and students of two or more races.

Races/ethnicities are only designated for United States citizens and permanent residents, all others are placed in the Nonresident Alien category. The URM students make up only 15 % of the First-time Full-time freshman (FTFT) cohort over the last nine years.

The URM group has six year cumulative graduation rates that range from 53 percent to 62.1 percent as compared to the whole FTFT freshman cohort's rates of 63.1% to 70.3% for the 2006-2009 cohorts. The average six year cumulative graduation rate for URM group is 57.7% as compared to 68.3 percent for the overall FTFT freshman cohort for the 2006-2009 cohorts (Figure 7, Appendix: Table 3).

FTFT Under-Represented minorities (URM) freshman continued to the 2nd Fall at a rate of 80.7 percent, slightly less than the overall FTFT freshman students (84.9 percent). The FTFT freshman student group continued to the second Fall at an average 84.9 percent (Figure 7, Appendix: Table 3).

Figure 7. Cumulative six year graduation rates and rates of students who continue to 2nd fall for under-represented minorities (URM) FTFT students versus overall first-time full-time students, Fall cohorts 2006 – 2014.



	2006	2007	2008	2009	2010	2011	2012	2013	2014	Average
Entering URM^a Cohort	517	468	401	534	586	585	632	573	704	556
	-----%-----									%
Continued to 2nd Fall	78.9	77.6	79.3	82.6	80.9	81.5	81.0	85.0	79.5	80.7
% Graduation 4- year	25.3	27.1	28.4	30.7	32.9	34.5				29.8
% Graduation 6-year	53.0	54.3	62.1	61.6						57.7

^aURM - (Black or African-American + Hispanic + Native American or Alaskan + Two or more options). Does not include Non-Resident Aliens.

Race/ethnicity categories changed in 2009 and Two or more Races became an option.

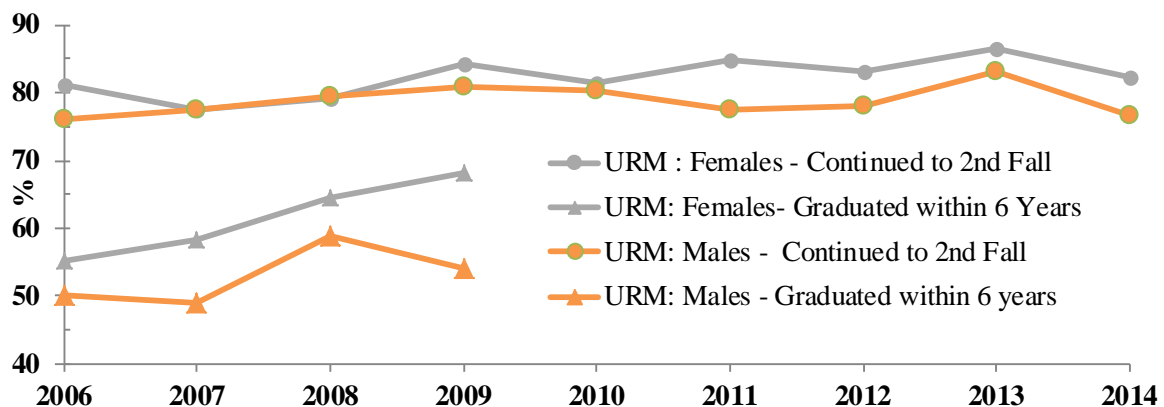
Source: OIRA

Distribution of the URM group into males and females indicates that females both continue to the 2nd Fall and graduate within four and six years at higher rates than men. Males and females continuing to the second Fall perform similarly over the cohort years, and the difference between male and female performance is 3.4 percent on average. FTFT freshman who start in Fall of 2007 and 2008 continue to the second Fall at rates within 0.2% of each other (Figure 8).

The trend for six year graduation rates for URM FTFT freshman is more variable than the overall FTFT trend. Graduation rates between males and females are more disparate, with females graduating within six years on average at 61.5 percent as opposed to males at only 53.1 percent. Females have consistently increased their cumulative six year graduation rates across cohort

years. Males had a 4.6% down turn in 2009. Females also out-perform males in the cumulative four year graduation rates. Females on average graduate within four years 13.8% more than males do (Figure 8).

Figure 8. Cumulative six year graduation and retention rates of students who continue to 2nd Fall for under-represented minority (URM) male and female FTFT students, Fall cohorts 2006 – 2014.



Cohort Year	2006	2007	2008	2009	2010	2011	2012	2013	2014	average
Female										
cohort initial observations	296	268	231	283	344	328	369	324	372	313
	-----%-----									%
Continue to 2nd Fall	81.1	77.6	79.2	84.1	81.4	84.8	83.2	86.4	82.3	82.2
Graduation 4 - years	29.1	31.7	33.3	38.5	39.0	43.6				35.9
Graduation 6 - years	55.1	58.2	64.5	68.2						61.5
Male										
cohort initial observations	221	200	170	251	242	257	263	249	332	243
	-----%-----									%
Continue to 2nd Fall	76.0	77.5	79.4	80.9	80.2	77.4	77.9	83.1	76.5	78.8
Graduation 4 - years	20.4	21.0	21.8	21.9	24.4	23.0				22.1
Graduation 6 - years	50.2	49.0	58.8	54.2						53.1

Source: OIRA

ACT- Equivalent Scores

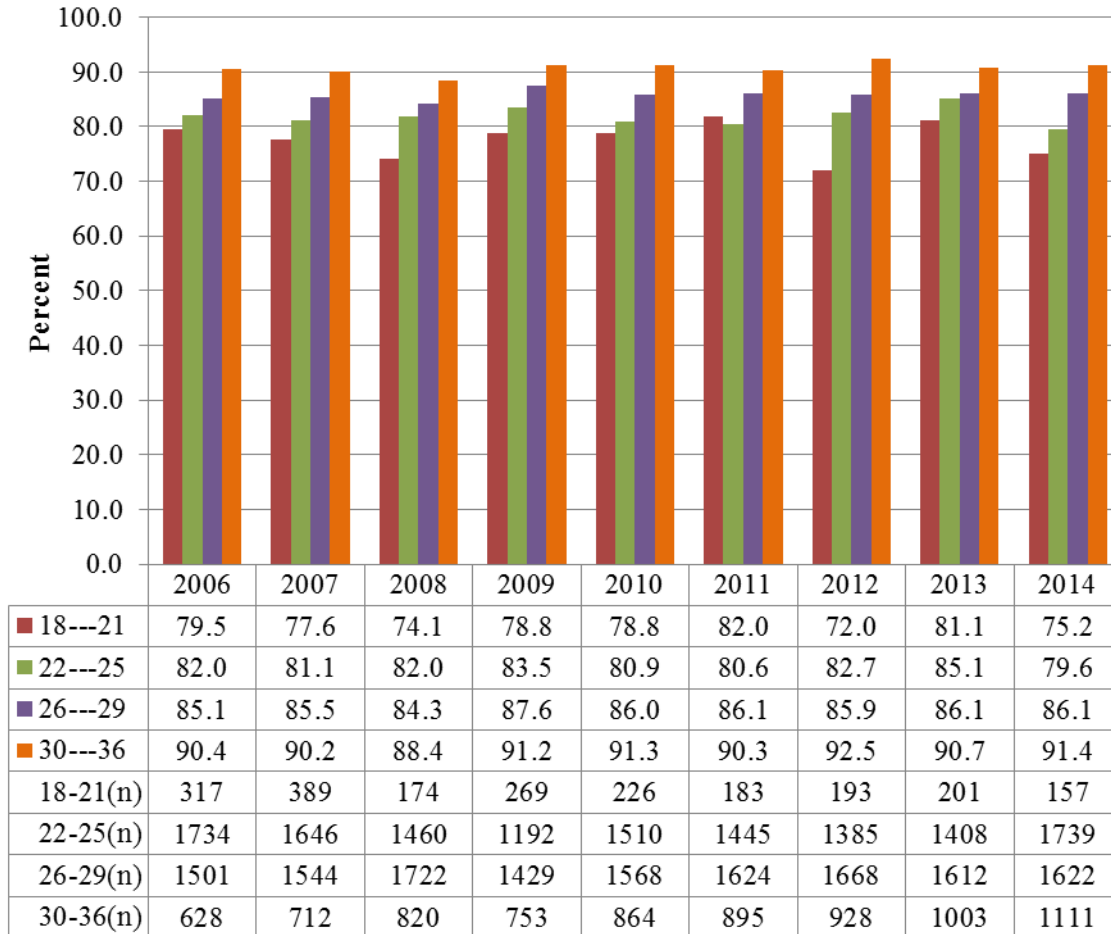
Student Success is determined by several factors including high school grade point average and ACT scores. ACT Equivalent Scores are composite scores from the ACT standardized test or from SAT tests converted to ACT. UTK FTFT freshman most often have ACT Equivalent Scores between 26-29 (37.6%) followed closely by students with scores between 22-25 (35.6%, Appendix: Table 5). Overall 93.6 percent of FTFT freshman have ACT Equivalent scores

between 22 and 36. FTFT freshman with ACT Equivalent Scores equal or greater than 22 are fairly evenly divided between the genders (Table 1).

Across the 2006-2009 cohort years, FTFT freshman continue to the second Fall on average at a rate of 81.9 percent in the 22-25 ACT Equivalent group, 85.8 percent in the 26-29 ACT Equivalent group and 90.7 percent in the 30-36 ACT Equivalent group. (Appendix: Table 5). Between genders, females across all cohort years and ACT Equivalent Scores continue to the second Fall on average at a slightly higher rate (88.3 percent) than males (81.7 percent) for all FTFT freshman (Table 9). Across all cohort years, for the 30-36 ACT Score group, females have a second Fall continuation average percentage of 93 while males have a rate of 89 percent. In the 26-29 category, females have a second fall rate of 87.7 percent while males have a rate of 84.0 percent. Across all cohort years, FTFT freshman female students with an ACT Equivalent Score between 22-25 have an average second fall continuation rate of 83.8 percent, while the FTFT freshman male students have a rate of 79.6 percent (Table 9).

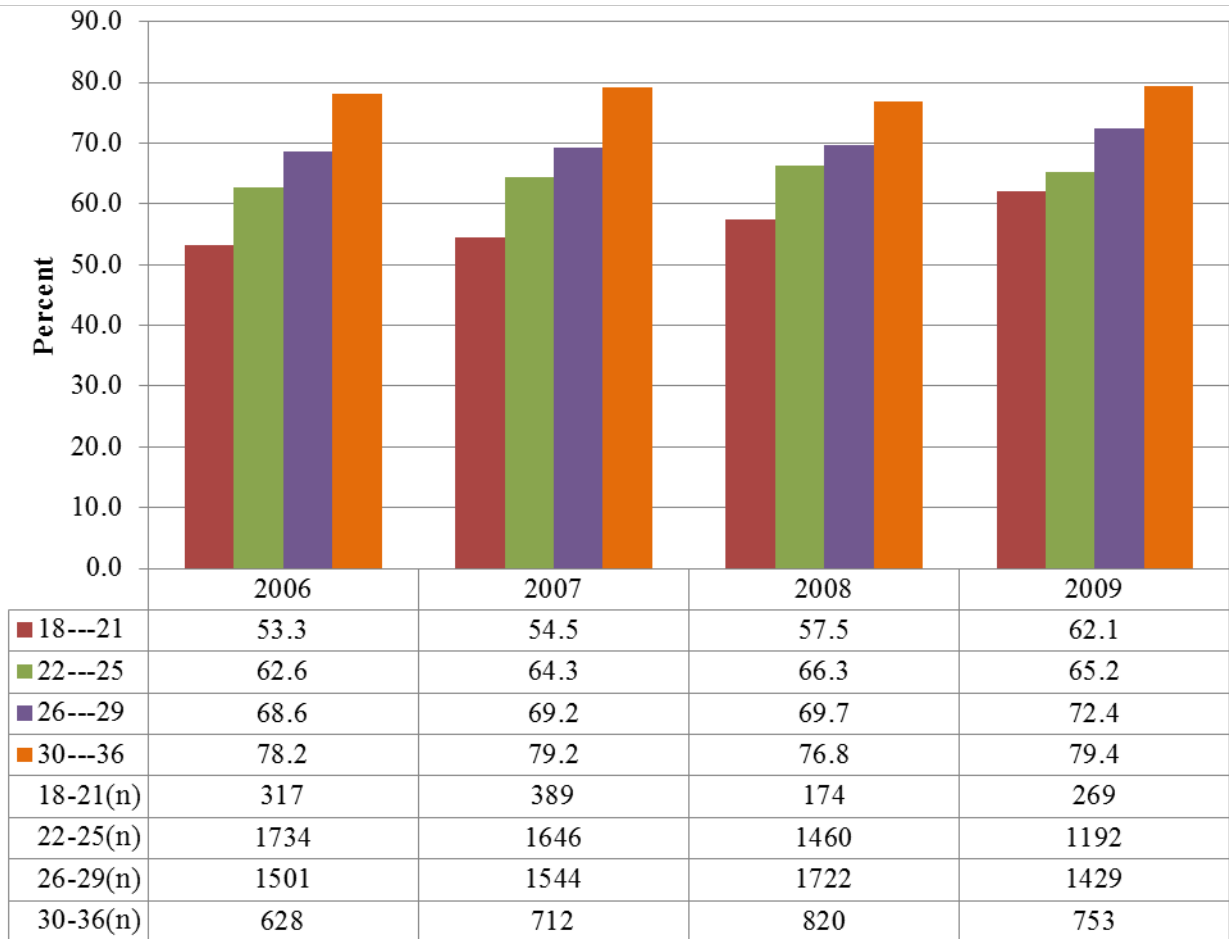
As the ACT Equivalent Score increases so does the 4, 5 and six year cumulative graduation rate for a given cohort year. Across cohort years, the graduation rate is a little more variable (Figure 10, Table 5). Female FTFT freshman across all ACT Equivalent scores graduate at a slightly higher rate than men, with female students having a average six year graduation rate of 68.1 percent while male students had a rate of 59.4 percent (Table 9). Four year rates have a wider gap between females and males, with females having a cumulative four year rate of 45.6 percent and males having a cumulative four year rate of 28.8 percent (Table 9). A bar chart of four and six year cumulative rates by gender and ACT Equivalent score is included below (Figure 11).

Figure 9. Retention rates (%) of first-time full-time freshman students who continue to the 2nd Fall by ACT Equivalent scores , Fall cohorts 2006-2014.



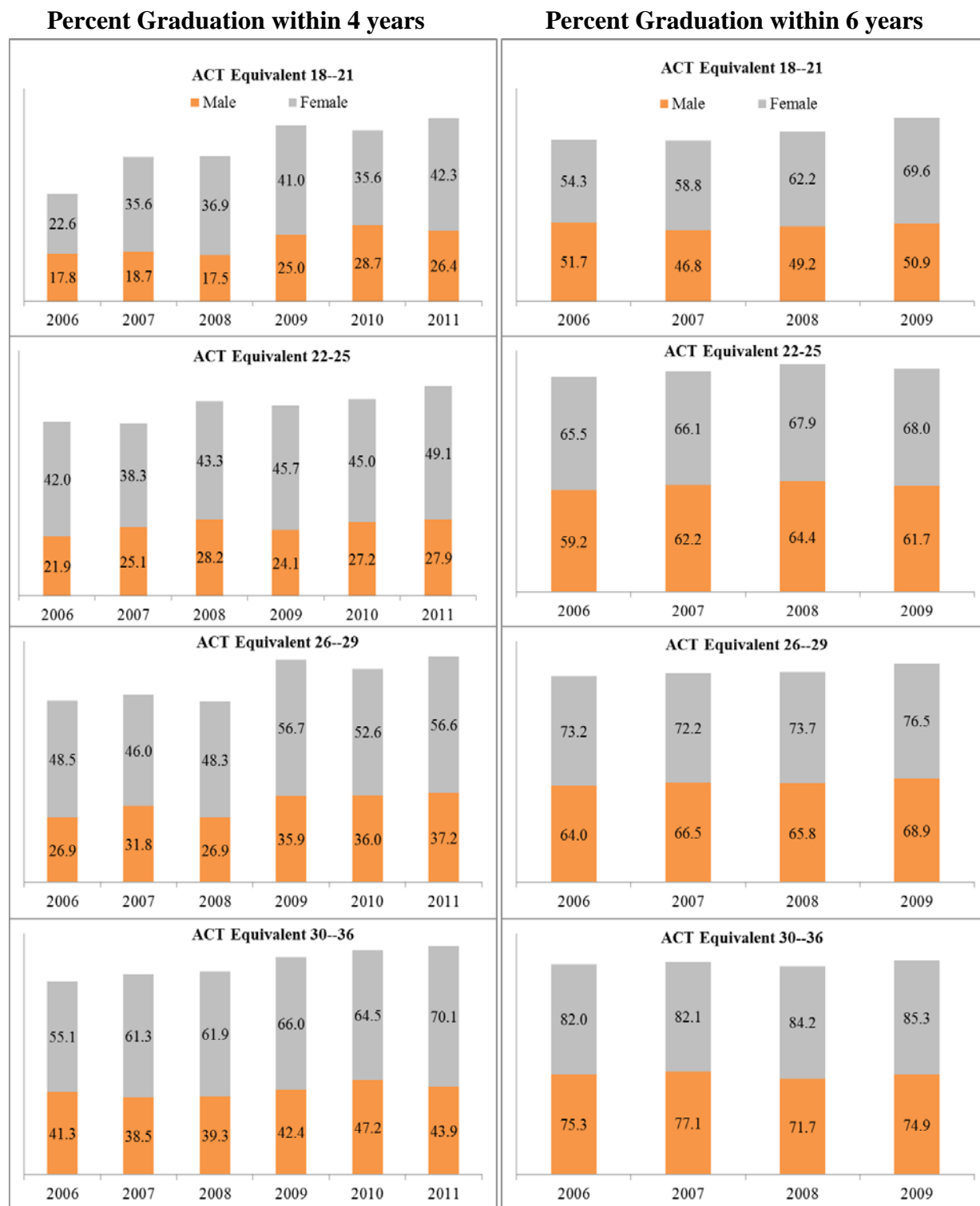
Source: OIRA

Figure 10. Cumulative six year graduation rates (%) of FTFT freshman, by ACT Equivalent scores, Fall cohorts 2006-2009.



Source: OIRA

Figure 11. Cumulative graduation rates (%) for FTFT freshman males and females by ACT Equivalent Scores, Fall cohorts 2006-2011.



**Category below 18 has less than 20 observations so is not shown here. Data is in Table 9 in Appendix.

Source: OIRA

Core High School GPA

High school grade point average (HSGPA) is generally a factor in predicting how well students do in college, especially their first year. Since 2004 UTK has calculated high school GPA from core classes including Math, English or Language Arts, Social Studies, Science and Foreign Language. HSGPA is capped at a high of 4.0 for cohorts 2006 – 2007, but uncapped (can be higher than 4.0) starting with the 2008 cohort. At UTK, most FTFT freshman students have a HSGPA greater or equal to a 3.5 (72%) (Appendix: Table 6.) Females with HSGPA of 3.5 or above make up (39.1%) of the FTFT freshman cohort. With higher HSGPA scores we have higher 2nd fall continuation rates and higher six year graduation rates within individual cohort years, however over time there is some variability. (Figure 12, Figure 13).

FTFT freshman who have a core HSGPA of 3.5 or above come back to the second fall at a average rate of 87.8 percent across the 2006-2014 cohorts. Those with a HSGPA below 3.5 only come back to the second fall at an average rate of 73.6 percent (Table 6). At HSGPA above 2.5 Females consistently continue to the second fall at higher rates than males. Females and males with a core HSGPA above 3.5 average across cohort years 2006-2014 continue to the 2nd Fall at about the same rate, 88.0 and 87.6 percent respectively (Table 10).

Graduation rates are higher as the HSGPA scores increase within individual cohort years. However when you look at individual HSGPA score groups across time you will find more variability (Figure 13). Males and Females have a smaller gap between gender in cumulative six year graduation rates than four year cumulative graduation rates. Across cohort years 2006-2009, Males and Females with a core GPA from 3.5 -3.99 graduate within six years at average rates of 66.8 and 68.3 respectively (Table 10, Figure 14). Females with a HSGPA from 3.5-3.99 across Fall 2006-2011 cohorts have a four year graduation rate of 45.4 percent while males have a graduation rate of 29.1 percent (Table 10, Figure 14).

Figure 12. Retention rates (%) of first-time full-time freshman (FTFT) that continue to 2nd fall by core high school GPA categories, Fall cohorts 2006-2014.

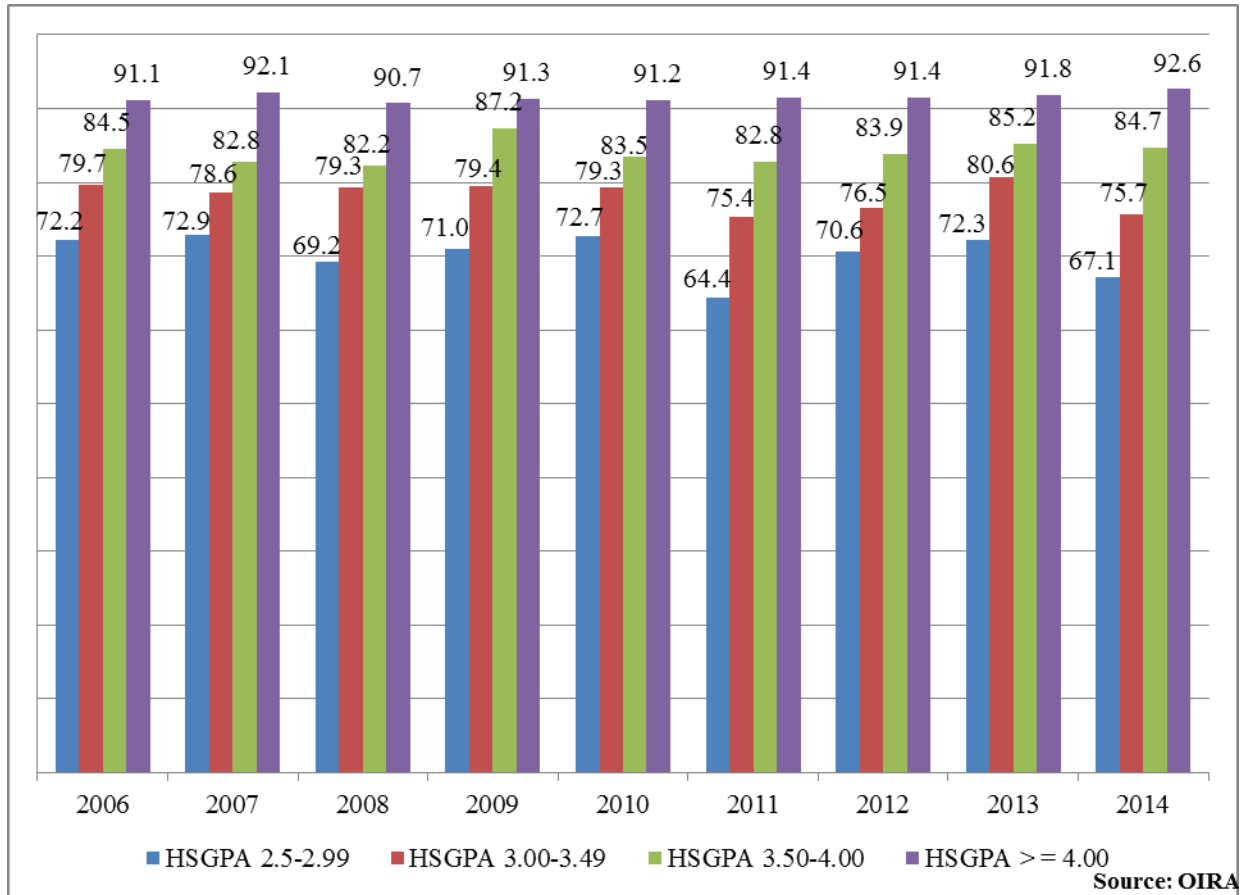


Figure 13. Cumulative six year graduation rates (%) of FTFT freshman by core high school GPA categories, Fall cohorts 2006-2009.

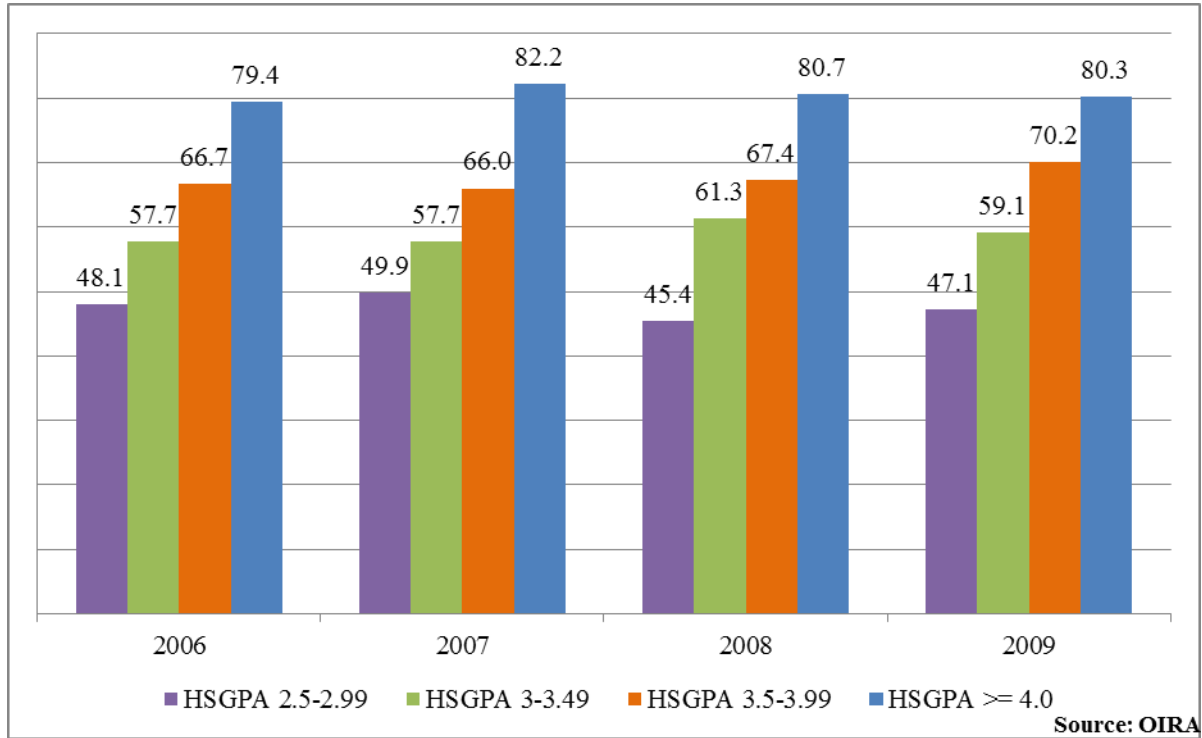
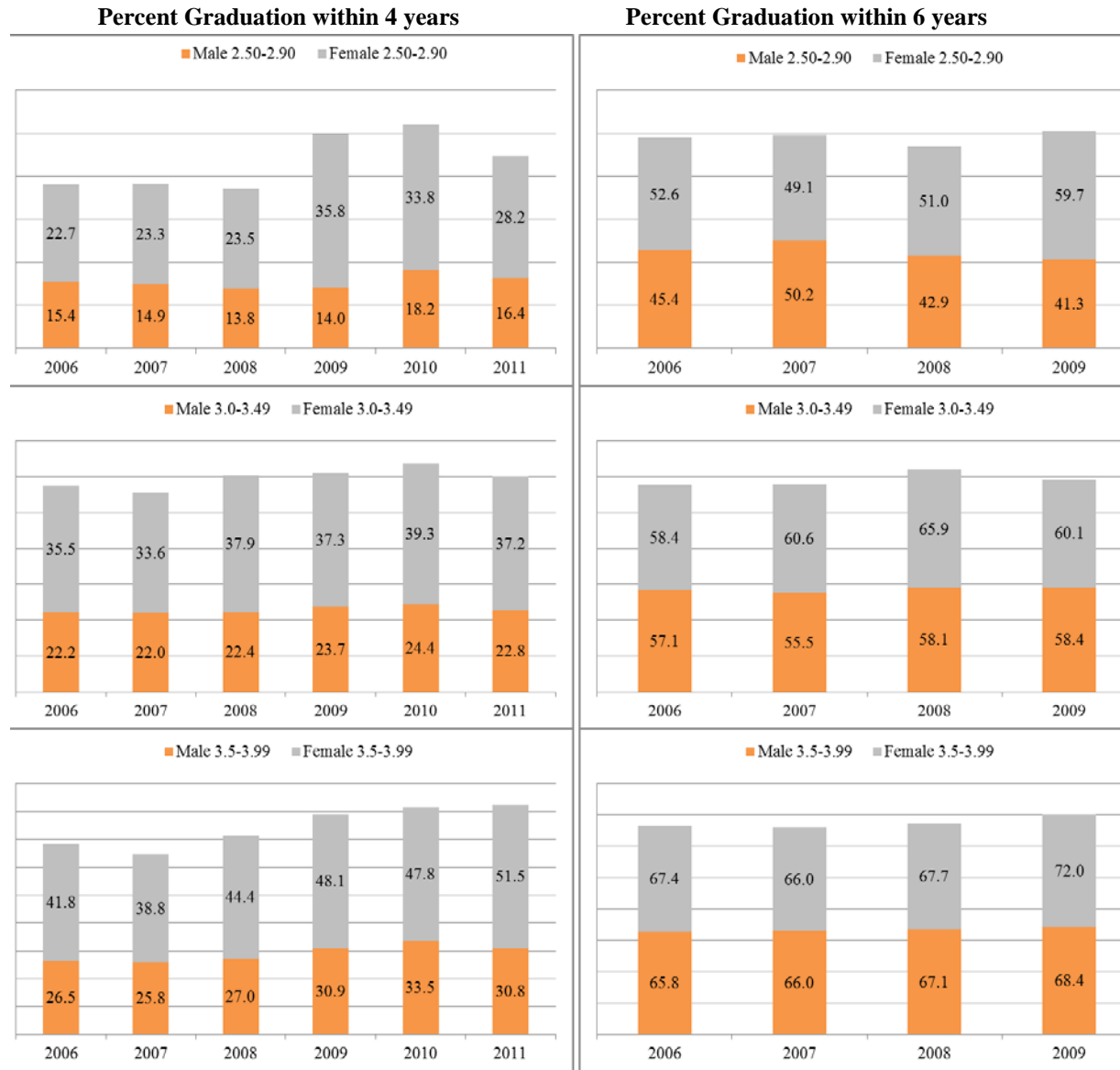


Figure 14. Cumulative four and six year graduation rates (%) for FTFT freshman males and females by high school core GPA for cohorts Fall cohorts 2006-2011.



Students with HSGPA below 2.5 has few observations so it is not shown here. Data is in Table 10 in appendix.

Source: OIRA

VI. Appendix – Retention and Graduation

Table 1. Initial number of students in first-time full-time freshman cohorts by gender, permanent address, race/ethnicity and minority status, Fall Cohorts 2006-2014.

Cohort Type	Start in 2006	Start in 2007	Start in 2008	Start in 2009	Start in 2010	Start in 2011	Start in 2012	Start in 2013	Start in 2014	Average (n)	Trend
	-----Overall-----										
Total	4,219	4,331	4,200	3,698	4,199	4,175	4,197	4,261	4,689	4,219	
	-----Gender-----									Average (n)	Trend
Female	2,169	2,215	2,117	1,831	2,062	2,110	2,144	2,179	2,350	2,131	
Male	2,050	2,116	2,083	1,867	2,137	2,065	2,053	2,082	2,339	2,088	
	-----Tennessee Residence-----									Average (n)	Trend
In State	3,623	3,684	3,635	3,286	3,724	3,705	3,771	3,733	4,007	3,685	
Out of State	596	647	565	412	475	470	426	528	682	533	
	-----Race/Ethnicity-----									Average (n)	Trend
Hispanic of any Race	87	71	81	82	117	118	151	127	180	113	
Black or African American	414	387	301	337	322	318	344	318	355	344	
White	3,549	3,640	3,637	2,982	3,416	3,374	3,357	3,401	3,637	3,444	
Asian or Pacific Islander	116	123	102	88	118	117	107	130	140	116	
American Indian or Alaskan Native	16	10	19	8	7	9	11	10	9	11	
Two or More Races				107	140	140	126	118	160	132	
Nonresident Alien	20	39	31	48	41	63	22	49	71	43	
Unknown	17	61	29	46	38	36	79	108	137	61	
URM^a	517	468	401	534	586	585	632	573	704	556	
	-----ACT Equivalent Score -----									Average (n)	Trend
None	28	24	10	35	15	22	13	24	50	25	
Less than 18	11	16	14	20	16	6	10	13	10	13	
18 - 21	317	389	174	269	226	183	193	201	157	234	
22 - 25	1,734	1,646	1,460	1,192	1,510	1,445	1,385	1,408	1,739	1,502	
26 - 29	1,501	1,544	1,722	1,429	1,568	1,624	1,668	1,612	1,622	1,588	
30 - 36	628	712	820	753	864	895	928	1,003	1,111	857	
	Core HS_GPA	-----Core HS_GPA Uncapped-----							Average (n)	Trend	
No GPA	19	25	22	29	24	20	54	66	67	36	
Below 2.50	71	69	28	33	21	11	11	40	70	39	
2.50 - 2.99	414	351	302	210	231	149	102	191	347	255	
3.00 - 3.49	1024	994	892	709	962	719	693	774	901	852	
3.50 - 3.99	1,359	1,498	1,355	1,254	1,370	1,363	1,385	1,266	1,314	1,352	
4.00 and Greater	1,332	1,394	1,601	1,463	1,591	1,913	1,952	1,924	1,990	1,684	

Table 2. Retention and graduation rates for first-time full-time freshman overall, by gender and Tennessee residence status, Fall Cohorts 2006-2014.

Cohort Year		2006	2007	2008	2009	2010	2011	2012	2013	2014	Change	Average	Trend
-----Overall-----													
Number in Initial Cohort		4219	4331	4200	3698	4199	4175	4197	4261	4689	470	4219	
% Continued	to 2 nd Fall	84.0	83.8	83.8	86.2	84.8	84.8	85.6	86.6	84.6	0.6	84.9	
	to 3 rd Fall	76.4	76.4	78.4	80.6	77.9	78.7	79.6	79.5		3.1	78.4	
	to 4 th Fall	72.2	72.7	74.0	75.6	73.3	73.8	75.8			3.6	73.9	
	to 5 th Fall	34.3	34.1	33.5	30.9	29.0	27.8				-6.5	31.6	
% Graduation	4 - Year	35.7	36.8	38.9	42.8	42.8	45.5				9.8	40.4	
	5 - Year	61.5	62.1	64.7	66.0	65.1					3.7	63.9	
	6 - Year	66.1	67.5	69.3	70.3						4.2	68.3	
-----Female-----													
Number in Initial Cohort		2169	2215	2117	1831	2062	2110	2144	2179	2350	181	2131	
% Continued	to 2 nd Fall	85.8	84.5	85.3	87.3	85.8	87.2	87.2	88.1	86.6	0.7	86.4	
	to 3 rd Fall	78.7	77.1	79.4	81.7	79.5	81.2	81.2	81.0		2.3	80.0	
	to 4 th Fall	73.7	72.7	75.1	76.7	74.3	75.5	77.0			3.3	75.0	
	to 5 th Fall	27.4	27.8	26.5	23.6	23.2	20.9				-6.6	24.9	
% Graduation	4 - Year	44.1	43.6	47.9	52.8	50.4	55.2				11.1	49.0	
	5 - Year	65.7	65.5	69.7	71.7	69.7					4.0	68.4	
	6 - Year	69.0	69.5	72.5	74.1						5.1	71.3	
-----Male-----													
Number in Initial Cohort		2050	2116	2083	1867	2137	2065	2053	2082	2339	289	2088	
% Continued	to 2 nd Fall	82.1	83.1	82.3	85.2	83.8	82.4	84.0	84.9	82.6	0.5	83.4	
	to 3 rd Fall	74.0	75.8	77.3	79.5	76.4	76.2	78.0	78.0		4.0	76.9	
	to 4 th Fall	70.6	72.6	72.9	74.6	72.3	72.1	74.5			3.9	72.8	
	to 5 th Fall	41.6	40.7	40.6	38.0	34.5	34.8				-6.7	38.4	
% Graduation	4 - Year	26.8	29.6	29.8	33.0	35.5	35.6				8.8	31.7	
	5 - Year	57.0	58.5	59.7	60.3	60.7					3.7	59.2	
	6 - Year	63.0	65.5	66.1	66.7						3.7	65.3	

Table 2. Continued - Retention and graduation rates for first-time full-time freshman overall, by gender and Tennessee residence status, Fall Cohorts 2006-2014.

Cohort Year		2006	2007	2008	2009	2010	2011	2012	2013	2014	-----In State-----		
											Change	Average	Trend
Number in Initial Cohort		3623	3684	3635	3286	3724	3705	3771	3733	4007	384	3685	
% Continued	to 2 nd Fall	84.8	84.1	84.4	87.0	85.3	85.6	86.3	87.1	85.3	0.5	85.6	
	to 3 rd Fall	77.2	77.1	79.0	81.5	78.4	79.6	80.4	80.5		3.3	79.2	
	to 4 th Fall	73.4	73.5	74.7	76.9	73.8	74.7	76.80			3.4	74.8	
	to 5 th Fall	35.3	35.0	34.2	31.9	29.7	28.7				-6.6	32.5	
% Graduation	4 - Year	35.7	36.7	38.5	42.8	42.5	45.40				9.7	40.3	
	5 - Year	62.0	62.5	65.0	66.6	65.06					3.0	64.2	
	6 - Year	66.9	68.2	69.7	71.1						4.2	69.0	
		-----Out of State-----									Change	Average	Trend
Number in Initial Cohort		596	647	565	412	475	470	426	528	682	86	533	
% Continued	to 2 nd Fall	79.0	82.1	79.8	79.6	80.8	78.7	79.8	82.4	80.5	1.5	80.3	
	to 3 rd Fall	71.5	72.8	74.2	73.1	73.7	71.7	72.8	72.5		1.1	72.8	
	to 4 th Fall	65.1	68.3	69.7	65.3	69.1	66.8	66.90			1.8	67.3	
	to 5 th Fall	28.2	29.2	28.7	23.3	23.4	20.43				-7.8	25.5	
% Graduation	4 - Year	35.9	37.2	41.4	42.5	45.7	46.60				10.7	41.6	
	5 - Year	57.9	59.5	62.8	60.9	65.5					7.6	61.3	
	6 - Year	61.1	63.8	66.9	64.1						3.0	64.0	

Table 3. Retention and graduation rates for first-time full-time freshman by race/ethnicity and minority status, Fall Cohorts 2006-2014.

Cohort Year		2006	2007	2008	2009	2010	2011	2012	2013	2014	Change Average Trend			
-----American Indian or Alaska Native-----														
Number in Initial Cohort		16	10	19	8	7	9	11	10	9	-7	11		
% Continued	to 2nd Fall	62.5	70.0	78.9	62.5	71.4	66.7	72.7	70.0	77.8	15.3	70.3		
	to 3rd Fall	56.3	70.0	78.9	62.5	71.4	66.7	63.6	60.0	3.8	66.2			
	to 4th Fall	43.8	60.0	78.9	37.5	57.1	55.6	72.7	29.0	57.9				
	to 5th Fall	37.5	30.0	42.1	37.5	14.3	22.2	-15.3	30.6					
% Graduation	4 - Year	18.8	30.0	15.8	12.5	42.9	22.2	3.5	23.7					
	5 - Year	43.8	40.0	47.4	37.5	57.1	13.4	45.2						
	6 - Year	50.0	50.0	63.2	37.5	-12.5	50.2							
-----Asian or Pacific Islander-----														
Number in Initial Cohort		116	123	102	88	118	117	107	130	140	24.0	116		
% Continued	to 2nd Fall	86.2	87.8	84.3	88.6	93.2	89.7	95.3	94.6	90.7	4.5	90.1		
	to 3rd Fall	81.0	79.7	76.5	88.6	90.7	85.5	91.6	85.4	4.4	84.9			
	to 4th Fall	81.9	72.4	71.6	84.1	86.4	78.6	87.9	6.0	80.4				
	to 5th Fall	37.1	32.5	27.5	40.9	32.2	35.9	-1.2	34.3					
% Graduation	4 - Year	43.1	41.5	44.1	39.8	50.8	45.3	2.2	44.1					
	5 - Year	69.8	64.2	62.7	70.5	79.7	9.8	69.4						
	6 - Year	77.6	67.5	70.6	77.3	-0.3	73.2							
-----Black or African American-----														
Number in Initial Cohort		414	387	301	337	322	318	344	318	355	-59.0	344		
% Continued	to 2nd Fall	80.4	78.6	79.4	83.7	82.3	83.3	82.8	88.1	78.0	-2.4	81.8		
	to 3rd Fall	68.6	72.4	73.8	76.9	73.6	78.6	74.7	76.7	8.1	74.4			
	to 4th Fall	64.3	65.9	69.4	71.2	67.7	70.4	69.5	5.2	68.3				
	to 5th Fall	31.9	34.6	38.2	39.2	30.1	32.4	0.5	34.4					
% Graduation	4 - Year	26.6	25.1	26.6	29.1	34.5	34.3	7.7	29.3					
	5 - Year	48.6	47.8	52.2	55.8	55.3	6.7	51.9						
	6 - Year	53.6	54.8	60.1	60.5	6.9	57.3							
-----Hispanic of any Race-----														
Number in Initial Cohort		87	71	81	82	117	118	151	127	180	93.0	113		
% Continued	to 2nd Fall	74.7	73.2	79.0	87.8	78.6	78.8	80.8	81.1	80.0	5.3	79.3		
	to 3rd Fall	64.4	70.4	74.1	80.5	76.1	72.0	76.8	73.2	8.9	73.4			
	to 4th Fall	57.5	62.0	77.8	76.8	65.0	68.6	73.5	16.0	68.7				
	to 5th Fall	32.2	21.1	34.6	36.6	31.6	30.5	-1.7	31.1					
% Graduation	4 - Year	20.7	38.0	38.3	39.0	30.8	36.4	15.8	33.9					
	5 - Year	41.4	50.7	61.7	65.9	55.6	14.2	55.0						
	6 - Year	50.6	52.1	69.1	70.7	20.2	60.6							

Table 3. Continued - Retention and graduation rates for first-time full-time freshman by race/ethnicity and minority status, Fall Cohorts 2006-2014.

Cohort Year		2006	2007	2008	2009	2010	2011	2012	2013	2014	Change	Average	Trend
-----Two or More Races-----													
Number in Initial Cohort				107	140	140	126	118	160		160	132	
% Continued	to 2nd Fall			76.6	80.0	80.7	77.0	82.2	82.5		82.5	79.8	
	to 3rd Fall			69.2	70.7	70.7	73.8	78.0		78.0	72.5		
	to 4th Fall			66.4	61.4	65.7	72.2		72.2	66.4			
	to 5th Fall			33.6	27.9	27.9			27.9	29.8			
% Graduation	4 - Year			30.8	30.7	34.3				34.3	31.9		
	5 - Year			53.3	52.1					52.1	52.7		
	6 - Year			59.8						59.8			
-----Nonresident Alien-----													
Number in Initial Cohort		20	39	31	48	41	63	22	49	71	51	43	
% Continued	to 2nd Fall	70.0	87.2	90.3	87.5	78.0	90.5	90.9	79.6	93.0	23.0	85.2	
	to 3rd Fall	70.0	84.6	77.4	77.1	70.7	77.8	77.3	77.6		7.6	76.6	
	to 4th Fall	55.0	76.9	77.4	70.8	70.7	76.2	72.7			17.7	71.4	
	to 5th Fall	40.0	33.3	48.4	31.3	29.3	27.0				-13.0	34.9	
% Graduation	4 - Year	20.0	35.9	32.3	45.8	36.6	47.6				27.6	36.4	
	5 - Year	50.0	69.2	67.7	68.8	63.4					13.4	63.8	
	6 - Year	50.0	71.8	71.0	75.0						25.0	66.9	
-----Unknown-----													
Number in Initial Cohort		17	61	29	46	38	36	79	108	137	120	61	
% Continued	to 2nd Fall	76.5	85.2	79.3	82.6	94.7	77.8	83.5	88.0	90.5	14.0	84.2	
	to 3rd Fall	64.7	72.1	69.0	71.7	84.2	66.7	82.3	88.9		24.2	74.9	
	to 4th Fall	52.9	67.2	62.1	65.2	71.1	63.9	72.2			19.2	64.9	
	to 5th Fall	23.5	36.1	31.0	30.4	28.9	19.4				-4.1	28.2	
% Graduation	4 - Year	35.3	29.5	34.5	32.6	44.7	44.4				9.2	36.8	
	5 - Year	52.9	62.3	58.6	58.7	68.4					15.5	60.2	
	6 - Year	58.8	63.9	62.1	60.9						2.0	61.4	
-----White-----													
Number in Initial Cohort		3549	3640	3637	2982	3416	3374	3357	3401	3637	88	3444	
% Continued	to 2nd Fall	84.8	84.4	84.2	86.8	85.1	85.2	86.2	86.6	85.0	0.1	85.4	
	to 3rd Fall	77.7	76.9	79.0	81.4	78.2	79.2	80.1	79.6		2.0	79.0	
	to 4th Fall	73.5	73.7	74.4	76.5	74.2	74.6	76.4			2.9	74.8	
	to 5th Fall	34.5	34.3	33.1	29.4	28.7	27.1				-7.5	31.2	
% Graduation	4 - Year	37.1	38.0	40.0	45.2	44.3	47.4				10.3	42.0	
	5 - Year	63.4	63.7	66.0	67.6	66.4					3.0	65.4	
	6 - Year	67.7	69.3	70.1	71.8						4.0	69.7	

Table 3. Continued - Retention and graduation rates for first-time full-time freshman by race/ethnicity and minority status, Fall Cohorts 2006-2014.

		2006	2007	2008	2009	2010	2011	2012	2013	2014	Change	Average	Trend
		-----Under- Represented Minority-----											
Number in Initial Cohort		517	468	401	534	586	585	632	573	704	187	556	
% Continued	to 2 nd Fall	78.9	77.6	79.3	82.6	80.9	81.5	81.0	85.0	79.5	0.6	80.7	
	to 3 rd Fall	67.5	72.0	74.1	74.9	73.4	75.2	74.8	75.9		8.4	73.5	
	to 4 th Fall	62.5	65.2	70.6	70.6	65.5	68.7	71.0			8.5	67.7	
	to 5 th Fall	31.7	31.8	37.7	37.6	29.7	30.8				-0.9	33.2	
% Graduation	4 - Year	25.3	27.1	28.4	30.7	32.9	34.5				9.2	29.8	
	5 - Year	47.2	48.1	53.9	56.6	54.6					7.4	52.1	
	6 - Year	53.0	54.3	62.1	61.6						8.6	57.7	

Table 4. Retention and graduation rates for URM first-time full-time females and males, Fall cohorts 2006-2014.

Cohort Year		2006	2007	2008	2009	2010	2011	2012	2013	2014	Change	Average	Trend
		-----URM Female-----											
Number in Initial Cohort		296	268	231	283	344	328	369	324	372	76	313	
% Continued	to 2 nd Fall	81.1	77.6	79.2	84.1	81.4	84.8	83.2	86.4	82.3	1.2	82.2	
	to 3 rd Fall	70.6	73.5	72.3	77.4	75.0	78.7	77.5	79.6		9.0	75.6	
	to 4 th Fall	65.2	67.9	70.1	75.6	68.3	69.8	74.5			9.3	70.2	
	to 5 th Fall	31.1	31.3	33.3	35.7	27.3	24.1				-7.0	30.5	
% Graduation	4 - Year	29.1	31.7	33.3	38.5	39.0	43.6				14.5	35.9	
	5 - Year	50.3	54.1	59.3	64.7	60.5					10.1	57.8	
	6 - Year	55.1	58.2	64.5	68.2						13.1	61.5	
		-----URM Male-----											
Number in Initial Cohort		221	200	170	251	242	257	263	249	332	111	243	
% Continued	to 2 nd Fall	76.0	77.5	79.4	80.9	80.2	77.4	77.9	83.1	76.5	0.5	78.8	
	to 3 rd Fall	63.3	70.0	76.5	73.7	71.1	70.8	71.1	71.1		7.7	71.0	
	to 4 th Fall	58.8	61.5	73.5	64.9	61.6	67.3	66.2			7.3	64.8	
	to 5 th Fall	33.5	34.0	43.5	39.8	33.1	39.3				5.8	37.2	
% Graduation	4 - Year	20.4	21.0	21.8	21.9	24.4	23.0				2.6	22.1	
	5 - Year	43.0	40.0	46.5	47.4	46.3					3.3	44.6	
	6 - Year	50.2	49.0	58.8	54.2						4.0	53.1	

Table 5. Retention and graduation rates for first-time full-time freshman by ACT Equivalent scores, Fall Cohorts 2006-2014.

Cohort Year	2006	2007	2008	2009	2010	2011	2012	2013	2014	Change	Average	Trend
-----NO SCORE-----												
Number in Initial Cohort	28	24	10	35	15	22	13	24	50	22	25	
% Continued to 2 nd Fall	64.3	62.5	70.0	74.3	73.3	72.7	84.6	79.2	90.0	25.7	74.5	
to 3 rd Fall	53.6	58.3	50.0	65.7	60.0	54.5	76.9	75.0		21.4	61.8	
to 4 th Fall	46.4	58.3	30.0	51.4	53.3	59.1	61.5			15.1	51.5	
% Graduation 4 - Year	32.1	8.3	20.0	22.9	26.7	31.8				-0.3	23.6	
5 - Year	32.1	37.5	40.0	40.0	40.0					7.9	37.9	
6 - Year	35.7	41.7	40.0	45.7						10.0	40.8	
----- ACT EQUIVALENT LT 18 -----												
Number in Initial Cohort	11	16	14	20	16	6	10	13	10	-1	13	
% Continued to 2 nd Fall	72.7	93.8	71.4	80.0	75.0	83.3	90.0	76.9	90.0	17.3	81.5	
to 3 rd Fall	36.4	93.8	71.4	60.0	81.3	66.7	90.0	61.5		25.2	70.1	
to 4 th Fall	36.4	68.8	71.4	45.0	81.3	66.7	80.0			43.6	64.2	
% Graduation 4 - Year	18.2	25.0	21.4	25.0	31.3	33.3				15.2	25.7	
5 - Year	27.3	62.5	50.0	40.0	62.5					35.2	48.5	
6 - Year	27.3	68.8	57.1	40.0						12.7	48.3	
----- ACT EQUIVALENT 18 - 21 -----												
Number in Initial Cohort	317	389	174	269	226	183	193	201	157	-160	234	
% Continued to 2 nd Fall	79.5	77.6	74.1	78.8	78.8	82.0	72.0	81.1	75.2	-4.3	77.7	
to 3 rd Fall	66.9	67.6	67.8	74.3	69.5	73.8	64.2	66.2		-0.7	68.8	
to 4 th Fall	58.4	61.4	65.5	69.1	64.6	66.7	57.5			-0.8	63.3	
% Graduation 4 - Year	20.8	29.6	29.9	34.6	32.7	36.1				15.2	30.6	
5 - Year	48.0	50.1	52.9	59.5	54.0					6.0	52.9	
6 - Year	53.3	54.5	57.5	62.1						8.8	56.8	

Table 5. Continued - Retention and graduation rates for first-time full-time freshman by ACT Equivalent scores, Fall Cohorts 2006-2014.

Cohort Year	2006 2007 2008 2009 2010 2011 2012 2013 2014									Change			
	----- ACT EQUIVALENT 22 - 25 -----									Average	Trend		
Number in Initial Cohort	1734	1646	1460	1192	1510	1445	1385	1408	1739	5	1502		
% Continued	to 2 nd Fall	82.0	81.1	82.0	83.5	80.9	80.6	82.7	85.1	79.6	-2.4	81.9	
	to 3 rd Fall	73.4	73.5	76.0	76.3	72.5	73.9	76.1	77.3	3.9	74.9		
	to 4 th Fall	69.1	69.4	71.5	71.1	67.4	68.8	72.2		3.1	69.9		
% Graduation	4 - Year	32.9	32.4	36.5	36.2	36.9	40.1				7.2	35.8	
	5 - Year	58.2	58.9	61.7	60.2	59.7					1.5	59.7	
	6 - Year	62.6	64.3	66.3	65.2						2.5	64.6	
----- ACT EQUIVALENT 26 - 29 -----									Average	Trend			
Number in Initial Cohort	1501	1544	1722	1429	1568	1624	1668	1612	1622	121	1588		
% Continued	to 2 nd Fall	85.1	85.5	84.3	87.6	86.0	86.1	85.9	86.1	86.1	1.0	85.8	
	to 3 rd Fall	78.4	77.7	78.7	82.6	79.5	79.9	80.0	80.0	1.6	79.6		
	to 4 th Fall	75.1	74.4	74.3	78.7	75.1	75.3	76.9		1.8	75.7		
% Graduation	4 - Year	37.6	38.6	37.6	45.5	44.1	46.7				9.2	41.7	
	5 - Year	63.2	63.7	64.8	68.2	66.4					3.2	65.2	
	6 - Year	68.6	69.2	69.7	72.4						3.9	70.0	
----- ACT EQUIVALENT 30 - 36 -----									Average	Trend			
Number in Initial Cohort	628	712	820	753	864	895	928	1003	1111	483	857		
% Continued	to 2 nd Fall	90.4	90.2	88.4	91.2	91.3	90.3	92.5	90.7	91.4	0.9	90.7	
	to 3 rd Fall	86.5	85.5	84.6	87.0	86.9	85.9	87.4	84.8		-1.6	86.1	
	to 4 th Fall	82.6	83.4	80.2	81.3	82.9	81.1	83.2			0.5	82.1	
% Graduation	4 - Year	47.1	48.2	48.5	52.6	54.1	54.5				7.4	50.8	
	5 - Year	75.2	73.3	73.0	75.0	75.7					0.5	74.5	
	6 - Year	78.2	79.2	76.8	79.4						1.2	78.4	

Table 6. Retention and graduation rates for first-time full-time freshman by core GPA Scores, Fall Cohorts 2006-2014.

Cohort Year	2006	2007	2008	2009	2010	2011	2012	2013	2014				
	----- No GPA Score -----									Change	Average	Trend	
	Core HS GPA		-----Core HS GPA Uncapped-----							Change	Average	Trend	
Number in Initial Cohort	19	25	22	29	24	20	54	66	67	48	36		
% Continued	2nd Fall	68.4	84.0	81.8	79.3	83.3	90.0	74.1	81.8	88.1	19.6	81.2	
	3rd Fall	63.2	72.0	77.3	72.4	66.7	70.0	70.4	71.2	8.1	70.4		
	4th Fall	52.6	72.0	59.1	55.2	70.8	75.0	66.7		14.0	64.5		
	5th Fall	26.3	40.0	18.2	20.7	33.3	30.0			3.7	28.1		
	6 - Year	29.4	20.0	22.7	34.5	29.2	40.0			10.6	29.3		
% Graduator	5 - Year	36.8	52.0	45.5	44.8	54.2				17.3	46.7		
	6 - Year	41.2	56.0	45.5	48.3					7.1	47.7		
		----- Below 2.50 -----									Change	Average	Trend
Number in Initial Cohort	71	69	28	33	21	11	11	40	70	-1	39		
% Continued	2nd Fall	78.9	68.1	67.9	72.7	66.7	63.6	45.5	65.0	52.9	-26.0	64.6	
	3rd Fall	62.0	62.3	57.1	63.6	57.1	54.5	45.5	55.0	-7.0	57.2		
	4th Fall	54.9	52.2	50.0	54.5	47.6	27.3	18.2		-36.7	43.5		
	5th Fall	38.0	36.2	28.6	36.4	14.3	18.2			-19.8	28.6		
	6 - Year	8.5	11.6	17.9	9.1	23.8	18.2			9.7	14.8		
% Graduator	5 - Year	31.0	31.9	42.9	36.4	33.3				2.3	35.1		
	6 - Year	36.6	39.1	42.9	42.4					5.8	40.3		
		----- 2.50 - 2.99 -----									Change	Average	Trend
Number in Initial Cohort	414	351	302	210	231	149	102	191	347	-67	255		
% Continued	2nd Fall	72.2	72.9	69.2	71.0	72.7	64.4	70.6	72.3	67.1	-5.1	70.3	
	3rd Fall	60.4	64.1	60.6	65.2	61.0	61.7	63.7	66.5	6.1	62.9		
	4th Fall	57.5	59.5	56.3	55.2	56.3	56.4	57.8		0.4	57.0		
	5th Fall	35.3	37.9	35.8	31.4	29.0	35.6			0.3	34.2		
	6 - Year	18.1	17.7	16.9	21.0	23.4	19.5			1.3	19.4		
% Graduator	5 - Year	43.2	41.3	41.4	41.4	43.3				0.1	42.1		
	6 - Year	48.1	49.9	45.4	47.1					-0.9	47.6		

Table 6. Continued - Retention and graduation rates for first-time full-time freshman by core GPA Scores, Fall Cohorts 2006-2014.

Cohort Year	2006	2007	2008	2009	2010	2011	2012	2013	2014	Change	Average	Trend	
	3.00 - 3.49												
	Core HS_GPA		Core HS_GPA Uncapped										
Number in Initial Cohort	1024	994	892	709	962	719	693	774	901	-123	852		
% Continued	2nd Fall	79.7	78.6	79.3	79.4	79.3	75.4	76.5	80.6	75.7	-4.0	78.3	
	3rd Fall	69.6	70.0	72.9	72.1	69.9	67.2	70.6	71.4		1.8	70.5	
	4th Fall	65.1	66.0	68.7	67.4	64.8	61.6	65.4			0.2	65.6	
	5th Fall	34.8	35.9	38.8	36.0	32.0	30.7				-4.0	34.7	
	6 - Year												
% Graduation	4 - Year	28.5	27.2	28.8	28.9	30.6	28.8				0.3	28.8	
	5 - Year	52.0	51.8	54.5	53.7	54.3					2.3	53.2	
	6 - Year	57.7	57.7	61.3	59.1						1.4	59.0	
	3.50 to 3.99									Change	Average	Trend	
Number in Initial Cohort	1,359	1,498	1,355	1,254	1,370	1,363	1,385	1,266	1,314	-45	1352		
% Continued	2nd Fall	84.5	82.8	82.2	87.2	83.5	82.8	83.9	85.2	84.7	0.2	84.1	
	3rd Fall	77.3	74.8	76.5	80.2	76.4	77.0	75.8	77.1		-0.2	76.9	
	4th Fall	72.8	70.7	72.2	76.3	70.9	71.5	72.6			-0.2	72.4	
	5th Fall	35.8	36.2	33.6	34.5	28.5	29.1				-6.7	32.9	
	6 - Year												
% Graduation	4 - Year	34.7	33.0	36.0	39.3	40.9	41.2				6.6	37.5	
	5 - Year	62.1	60.6	63.0	65.6	63.4					1.3	62.9	
	6 - Year	66.7	66.0	67.4	70.2						3.5	67.6	
	Greater or equal to 4.0									Change	Average	Trend	
Number in Initial Cohort	1,332	1,394	1,601	1,463	1,591	1,913	1,952	1,924	1,990	658	1684		
% Continued	2nd Fall	91.1	92.1	90.7	91.3	91.2	91.4	91.4	91.8	92.6	1.5	91.5	
	3rd Fall	86.7	86.6	86.8	87.8	87.0	85.8	86.8	86.4		-0.3	86.7	
	4th Fall	82.7	83.9	82.5	82.8	83.4	81.7	83.2			0.5	82.9	
	5th Fall	32.1	29.4	30.3	25.4	27.7	25.1				-6.9	28.3	
	6 - Year												
% Graduation	4 - Year	49.3	54.1	51.8	56.6	55.2	57.1				7.8	54.0	
	5 - Year	75.8	77.8	77.0	76.8	76.9					1.1	76.8	
	6 - Year	79.4	82.2	80.7	80.3						0.9	80.7	

Table 7. Initial number of students in first-time part-time freshman by gender, permanent address, race/ethnicity and minority Status, Fall cohorts 2006-2014.

Cohort Type	Start in 2006	Start in 2007	Start in 2008	Start in 2009	Start in 2010	Start in 2011	Start in 2012	Start in 2013	Start in 2014	Average (n)	Trend
	-----Overall-----										
Total	25	20	15	19	15	13	10	15	12	16	
	-----Gender-----									Average (n)	Trend
Female	17	11	5	13	7	4	4	9	4	8.2	
Male	8	9	10	6	8	9	6	6	8	7.8	
	-----Tennessee Residence-----									Average (n)	Trend
In State	18	16	13	15	12	8	8	8	11	12.1	
Out of State	7	4	2	4	3	5	2	7	1	3.9	
	-----Race/Ethnicity-----									Average (n)	Trend
Hispanic of any Race	2	0	0	0	1	2	1	0	0	0.7	
Black or African American	2	0	2	2	2	1	0	0	1	1.1	
White	19	18	11	14	12	7	7	11	9	12.0	
Asian or Pacific Islander	1	1	0	0	0	0	1	0	2	0.6	
American Indian or Alaskan Native	0	0	0	0	0	0	0	0	0	0.0	
Two or More Races	0	0	0	0	0	0	1	0	0	0.1	
Nonresident Alien	0	0	1	0	0	3	0	3	0	0.8	
Unknown	1	1	1	3	0	0	0	1	0	0.8	
URM ^a	4	0	2	2	3	3	2	0	1	1.9	
	-----ACT Equivalent Score -----									Average (n)	Trend
None	3	1	2	6	3	4	1	4	0	2.7	
Less than 18	0	0	0	0	1	0	0	0	0	0.1	
18 - 21	3	2	1	1	0	0	1	0	0	0.9	
22 - 25	14	11	7	3	5	5	5	5	6	6.8	
26 - 29	4	3	5	4	3	3	1	5	2	3.3	
30 - 36	1	3	0	5	3	1	2	1	4	2.2	
	Core HS_GPA		-----Core HS_GPA Uncapped-----							Average (n)	Trend
No GPA	1	3	6	8	3	3	10	3	0	4.1	
Below 2.50	0	1	0	1	0	1	0	1	2	0.7	
2.50 - 2.99	4	2	3	1	2	0	0	3	3	2.0	
3.00 - 3.49	9	6	4	3	4	2	7	1	1	4.1	
3.50 - 3.99	3	7	1	4	4	5	3	4	2	3.7	
4.00 and Greater	8	1	1	2	2	2	0	3	4	2.6	

Table 8. Retention and graduation for first-time full-time freshman by gender within race, Fall cohorts 2006-2014.

Cohort Year	Gender			Race/Ethnicity																										
				Hispanic			American Indian or Alaska Native**			Asian or Pacific Islander			Black or African American			White			Two or More Races			Unknown			Nonresident Alien					
	Total	Male	Female	Total	Male	Female	Total	Male	Female	Total	Male	Female	Total	Male	Female	Total	Male	Female	Total	Male	Female	Total	Male	Female	Total	Male	Female	Total	Male	Female
Initial Observations																														
2006	4219	2050	2169	87	48	39	16	6	10	116	60	56	414	167	247	3549	1754	1795				17	4	13	20	11	9			
2007	4331	2116	2215	71	34	37	10	5	5	123	69	54	387	161	226	3640	1801	1839				61	26	35	39	20	19			
2008	4200	2083	2117	81	38	43	19	8	11	102	47	55	301	124	177	3637	1827	1810				29	21	8	31	18	13			
2009	3698	1867	1831	82	43	39	8	3	5	88	45	43	337	151	186	2982	1515	1467	107	54	53	46	29	17	48	27	21			
2010	4199	2137	2062	117	55	62	7	4	3	118	67	51	322	124	198	3416	1782	1634	140	59	81	38	17	21	41	29	12			
2011	4175	2065	2110	118	64	54	9	3	6	117	66	51	318	129	189	3374	1690	1684	140	61	79	36	20	16	63	32	31			
2012	4197	2053	2144	151	66	85	11	2	9	107	54	53	344	141	203	3357	1674	1683	126	54	72	79	49	30	22	13	9			
2013	4261	2082	2179	127	49	78	10	6	4	130	71	59	318	137	181	3401	1676	1725	118	57	61	108	60	48	49	26	23			
2014	4689	2339	2350	180	89	91	9	6	3	140	79	61	355	164	191	3637	1818	1819	160	73	87	137	62	75	71	48	23			
Percent Continued to 2nd Fall																														
2006	84.0	82.1	85.8	74.7	81.3	66.7	62.5	83.3	50.0	86.2	85.0	87.5	80.4	74.3	84.6	84.8	82.8	86.7				76.5	75.0	76.9	70.0	72.7	66.7			
2007	83.8	83.1	84.5	73.2	70.6	75.7	70.0	100.0	40.0	87.8	81.2	96.3	78.6	78.3	78.8	84.4	83.7	85.0				85.2	84.6	85.7	87.2	85.0	89.5			
2008	83.8	82.3	85.3	79.0	68.4	88.4	78.9	75.0	81.8	84.3	87.2	81.8	79.4	83.1	76.8	84.2	82.4	86.1				79.3	81.0	75.0	90.3	83.3	100.0			
2009	86.2	85.2	87.3	87.8	90.7	84.6	62.5	66.7	60.0	88.6	93.3	83.7	83.7	81.5	85.5	86.8	85.7	87.9	76.6	72.2	81.1	82.6	82.8	82.4	87.5	81.5	95.2			
2010	84.8	83.8	85.8	78.6	70.9	85.5	71.4	75.0	66.7	93.2	95.5	90.2	82.3	83.1	81.8	85.1	83.8	86.5	80.0	83.1	77.8	94.7	100.0	90.5	78.0	72.4	91.7			
2011	84.8	82.4	87.2	78.8	75.0	83.3	66.7	66.7	66.7	89.7	87.9	92.2	83.3	76.7	87.8	85.2	82.9	87.5	80.7	82.0	79.7	77.8	80.0	75.0	90.5	87.5	93.5			
2012	85.6	84.0	87.2	80.8	75.8	84.7	72.7	50.0	77.8	95.3	92.6	98.1	82.8	82.3	83.3	86.2	84.8	87.6	77.0	70.4	81.9	83.5	75.5	96.7	90.9	92.3	88.9			
2013	86.6	84.9	88.1	81.1	85.7	78.2	70.0	66.7	75.0	94.6	95.8	93.2	88.1	83.9	91.2	86.6	84.9	88.2	82.2	80.7	83.6	88.0	85.0	91.7	79.6	73.1	87.0			
2014	84.6	82.6	86.6	80.0	80.9	79.1	77.8	66.7	100.0	90.7	86.1	96.7	78.0	74.4	81.2	85.0	83.2	86.7	82.5	76.7	87.4	90.5	83.9	96.0	93.0	93.8	91.3			
Percent Graduation within four years																														
2006	35.7	26.8	44.1	20.7	20.8	20.5	18.8	16.7	20.0	43.1	38.3	48.2	26.6	20.4	30.8	37.0	27.4	46.5				35.3	0.0	46.2	20.0	18.2	22.2			
2007	36.8	29.6	43.6	38.0	32.4	43.2	30.0	40.0	20.0	40.7	30.4	55.6	25.1	18.0	30.1	38.0	30.8	45.1				29.5	19.2	37.1	35.9	25.0	47.4			
2008	38.9	29.8	47.9	38.3	23.7	51.2	15.8	25.0	9.1	44.1	38.3	49.1	26.6	21.0	30.5	40.0	30.5	49.7				34.5	23.8	62.5	32.3	22.2	46.2			
2009	42.8	33.0	52.8	39.0	34.9	43.6	12.5	0.0	20.0	39.8	37.8	41.9	29.1	16.6	39.2	45.2	34.9	55.8	30.8	27.8	34.0	32.6	27.6	41.2	45.8	29.6	66.7			
2010	42.8	35.5	50.4	30.8	20.0	40.3	42.9	25.0	66.7	50.9	44.8	58.8	34.5	24.2	40.9	44.3	36.6	52.6	30.7	28.8	32.1	44.7	41.2	47.6	36.6	31.0	50.0			
2011	45.6	35.7	55.3	36.4	25.0	50.0	22.2	33.3	16.7	45.3	40.9	51.0	34.3	22.5	42.3	47.5	37.4	57.5	34.8	21.3	45.0	44.4	45.0	43.8	47.6	28.1	67.7			
Percent Graduation within six years																														
2006	66.1	63.0	69.0	50.6	58.3	41.0	50.0	66.7	40.0	77.6	73.3	82.1	53.6	47.3	57.9	67.7	64.3	71.1				58.8	50.0	61.5	50.0	54.5	44.4			
2007	67.5	65.5	69.5	52.1	52.9	51.4	50.0	80.0	20.0	67.5	56.5	81.5	54.8	47.2	60.2	69.3	67.9	70.6				63.9	50.0	74.3	71.8	65.0	78.9			
2008	69.3	66.1	72.5	69.1	55.3	81.4	63.2	62.5	63.6	70.6	68.1	72.7	60.1	59.7	60.5	70.1	66.9	73.4				62.1	57.1	75.0	71.0	55.6	92.3			
2009	70.3	66.7	74.1	70.7	72.1	69.2	37.5	33.3	40.0	77.3	82.2	72.1	60.5	48.3	70.4	71.8	68.4	75.3	59.8	57.4	62.3	60.9	58.6	64.7	75.0	70.4	81.0			

**Note some races have very few observations Please see Table 8.

Table 9. Retention and graduation for first-time full-time freshman by gender within ACT equivalent score, Fall cohorts 2006-2014.

	Total			NO ACT SCORE			LT 18			18 --- 21			22 --- 25			26 --- 29			30 --- 36		
	Total	Male	Female	Total	Male	Female	Total	Male	Female	Total	Male	Female	Total	Male	Female	Total	Male	Female	Total	Male	Female
Initial Observations																					
2006	4219	2050	2169	28	17	11	11	7	4	317	118	199	1734	788	946	1501	759	742	628	361	267
2007	4331	2116	2215	24	18	6	16	6	10	389	139	250	1646	740	906	1544	803	741	712	410	302
2008	4200	2083	2117	10	6	4	14	10	4	174	63	111	1460	657	803	1722	863	859	820	484	336
2009	3698	1867	1831	35	24	11	20	12	8	269	108	161	1192	527	665	1429	769	660	753	427	326
2010	4199	2137	2062	15	11	4	16	11	5	226	94	132	1510	688	822	1568	810	758	864	523	341
2011	4175	2065	2110	22	17	5	6	6		183	72	111	1445	616	829	1624	823	801	895	531	364
2012	4197	2053	2144	13	8	5	10	7	3	193	70	123	1385	592	793	1668	831	837	928	545	383
2013	4261	2082	2179	24	17	7	13	7	6	201	73	128	1408	596	812	1612	786	826	1003	603	400
2014	4689	2339	2350	50	32	18	10	6	4	157	75	82	1739	798	941	1622	806	816	1111	622	489
Percent Continued to 2nd Fall																					
2006	84.0	82.1	85.8	64.3	52.9	81.8	72.7	71.4	75.0	79.5	81.4	78.4	82.0	78.9	84.6	85.1	82.6	87.6	90.4	89.8	91.4
2007	83.8	83.1	84.5	62.5	61.1	66.7	93.8	100.0	90.0	77.6	81.3	75.6	81.1	79.9	82.1	85.5	84.1	87.0	90.2	88.3	92.7
2008	83.8	82.3	85.3	70.0	66.7	75.0	71.4	70.0	75.0	74.1	68.3	77.5	82.0	79.9	83.7	84.3	83.2	85.3	88.4	86.2	91.7
2009	86.2	85.2	87.3	74.3	79.2	63.6	80.0	75.0	87.5	78.8	73.1	82.6	83.5	82.4	84.4	87.6	87.3	88.0	91.2	88.5	94.8
2010	84.8	83.8	85.8	73.3	72.7	75.0	75.0	81.8	60.0	78.8	79.8	78.0	80.9	78.5	83.0	86.0	84.4	87.6	91.3	90.6	92.4
2011	84.8	82.4	87.2	72.7	64.7	100.0	83.3	83.3		82.0	79.2	83.8	80.6	77.1	83.1	86.1	83.5	88.8	90.3	87.9	93.7
2012	85.6	84.0	87.2	84.6	87.5	80.0	90.0	85.7	100.0	72.0	68.6	74.0	82.7	79.6	85.0	85.9	83.5	88.2	92.5	91.4	94.0
2013	86.6	84.9	88.1	79.2	82.4	71.4	76.9	57.1	100.0	81.1	76.7	83.6	85.1	82.6	86.9	86.1	84.2	87.9	90.7	89.6	92.5
2014	84.6	82.6	86.6	90.0	90.6	88.9	90.0	100.0	75.0	75.2	72.0	78.0	79.6	77.6	81.3	86.1	83.1	89.0	91.4	89.1	94.3
Percent Graduation within 4 Years																					
2006	35.7	26.8	44.1	32.1	17.6	54.5	18.2	14.3	25.0	20.8	17.8	22.6	32.9	21.9	42.0	37.6	26.9	48.5	47.1	41.3	55.1
2007	36.8	29.6	43.6	8.3	5.6	16.7	25.0	16.7	30.0	29.6	18.7	35.6	32.4	25.1	38.3	38.6	31.8	46.0	48.2	38.5	61.3
2008	38.9	29.8	47.9	20.0	16.7	25.0	21.4	20.0	25.0	29.9	17.5	36.9	36.5	28.2	43.3	37.6	26.9	48.3	48.5	39.3	61.9
2009	42.8	33.0	52.8	22.9	16.7	36.4	25.0	16.7	37.5	34.6	25.0	41.0	36.2	24.1	45.7	45.5	35.9	56.7	52.6	42.4	66.0
2010	42.8	35.5	50.4	26.7	18.2	50.0	31.3	27.3	40.0	32.7	28.7	35.6	36.9	27.2	45.0	44.1	36.0	52.6	54.1	47.2	64.5
2011	45.6	35.7	55.3	31.8	23.5	60.0	33.3	33.3		36.1	26.4	42.3	40.1	27.9	49.1	46.7	37.2	56.6	54.5	43.9	70.1
Percent Graduation within 6 Years																					
2006	66.1	63.0	69.0	35.7	23.5	54.5	27.3	28.6	25.0	53.3	51.7	54.3	62.6	59.2	65.5	68.6	64.0	73.2	78.2	75.3	82.0
2007	67.5	65.5	69.5	41.7	38.9	50.0	68.8	66.7	70.0	54.5	46.8	58.8	64.3	62.2	66.1	69.2	66.5	72.2	79.2	77.1	82.1
2008	69.3	66.1	72.5	40.0	33.3	50.0	57.1	50.0	75.0	57.5	49.2	62.2	66.3	64.4	67.9	69.7	65.8	73.7	76.8	71.7	84.2
2009	70.3	66.7	74.1	45.7	45.8	45.5	40.0	33.3	50.0	62.1	50.9	69.6	65.2	61.7	68.0	72.4	68.9	76.5	79.4	74.9	85.3

*Note some Males and females have very few observations.

Table 10. Retention and graduation for first-time full-time freshman by gender within core HSGPA, Fall cohorts 2006-2014.

	Total			NO GPA			BELOW 2.5			2.5 - 2.9			3.0 - 3.49			3.5 - 3.99			ABOVE 4.0		
	Total	Male	Female	Total	Male	Female	Total	Male	Female	Total	Male	Female	Total	Male	Female	Total	Male	Female	Total	Male	Female
Initial Observations																					
2006	4219	2050	2169	19	8	11	71	58	13	414	260	154	1024	536	488	1359	631	728	1332	557	775
2007	4331	2116	2215	25	13	12	69	54	15	351	235	116	994	550	444	1498	674	824	1394	590	804
2008	4200	2083	2117	23	15	8	28	22	6	301	203	98	892	523	369	1355	653	702	1601	667	934
2009	3698	1867	1831	29	18	11	33	25	8	210	143	67	709	438	271	1254	643	611	1463	600	863
2010	4199	2137	2062	24	14	10	21	18	3	231	154	77	962	565	397	1370	665	705	1591	721	870
2011	4175	2065	2110	20	14	6	11	10	1	149	110	39	719	421	298	1363	678	685	1913	832	1081
2012	4197	2053	2144	54	26	28	11	7	4	102	82	20	693	395	298	1385	689	696	1952	854	1098
2013	4261	2082	2179	66	39	27	40	29	11	191	117	74	774	423	351	1266	612	654	1924	862	1062
2014	4689	2339	2350	67	46	21	70	51	19	347	230	117	901	477	424	1314	661	653	1990	874	1116
Percent Continued to 2nd Fall																					
2006	84.0	82.1	85.8	68.4	37.5	90.9	78.9	81.0	69.2	72.2	68.5	78.6	79.7	78.0	81.6	84.5	84.9	84.1	91.1	89.9	91.9
2007	83.8	83.1	84.5	84.0	76.9	91.7	68.1	70.4	60.0	72.9	73.2	72.4	78.6	78.4	78.8	82.8	82.8	82.8	92.1	93.1	91.4
2008	83.8	82.3	85.3	78.3	73.3	87.5	67.9	68.2	66.7	69.4	68.5	71.4	79.3	77.2	82.1	82.2	81.8	82.6	90.7	91.6	90.0
2009	86.2	85.2	87.3	79.3	77.8	81.8	72.7	80.0	50.0	71.0	66.4	80.6	79.4	78.5	80.8	87.2	87.4	87.1	91.3	92.5	90.4
2010	84.8	83.8	85.8	83.3	78.6	90.0	66.7	66.7	66.7	72.7	72.1	74.0	79.3	79.5	79.1	83.5	82.1	84.8	91.2	91.7	90.8
2011	84.8	82.4	87.2	90.0	85.7	100.0	63.6	60.0	100	64.4	61.8	71.8	75.4	72.7	79.2	82.8	82.3	83.4	91.4	90.4	92.2
2012	85.6	84.0	87.2	74.1	76.9	71.4	45.5	28.6	75.0	70.6	69.5	75.0	76.5	75.4	77.9	83.9	82.4	85.3	91.4	91.2	91.6
2013	86.6	84.9	88.1	81.8	79.5	85.2	65.0	65.5	63.6	72.3	68.4	78.4	80.6	78.5	83.2	85.2	84.3	86.1	91.8	91.6	92.0
2014	84.6	82.6	86.6	88.1	91.3	81.0	52.9	49.0	63.2	67.1	67.4	66.7	75.7	72.3	79.5	84.7	84.3	85.1	92.6	92.4	92.7
Percent Graduation within 4 Years																					
2006	35.7	26.8	44.1	29.4	14.3	40.0	8.5	8.6	7.7	18.1	15.4	22.7	28.5	22.2	35.5	34.7	26.5	41.8	49.3	39.1	56.6
2007	36.8	29.6	43.6	20.0	7.7	33.3	11.6	9.3	20.0	17.7	14.9	23.3	27.2	22.0	33.6	33.0	25.8	38.8	54.1	49.3	57.6
2008	38.9	29.8	47.9	21.7	6.7	50.0	17.9	13.6	33.3	16.9	13.8	23.5	28.8	22.4	37.9	36.0	27.0	44.4	51.8	44.4	57.1
2009	42.8	33.0	52.8	34.5	16.7	63.6	9.1	8.0	12.5	21.0	14.0	35.8	28.9	23.7	37.3	39.3	30.9	48.1	56.6	48.2	62.5
2010	42.8	35.5	50.4	29.2	14.3	50.0	23.8	22.2	33.3	23.4	18.2	33.8	30.6	24.4	39.3	40.9	33.5	47.8	55.2	50.3	59.2
2011	45.6	35.7	55.3	40.0	42.9	33.3	18.2	10.0	100	19.5	16.4	28.2	28.8	22.8	37.2	41.2	30.8	51.5	57.1	48.8	63.6
Percent Graduation within 6 Years																					
2006	66.1	63.0	69.0	41.2	14.3	60.0	36.6	39.7	23.1	48.1	45.4	52.6	57.7	57.1	58.4	66.7	65.8	67.4	79.4	76.8	81.3
2007	67.5	65.5	69.5	56.0	46.2	66.7	39.1	35.2	53.3	49.9	50.2	49.1	57.7	55.5	60.6	66.0	66.0	66.0	82.2	83.6	81.2
2008	69.3	66.1	72.5	43.5	26.7	75.0	42.9	40.9	50.0	45.5	42.9	51.0	61.3	58.1	65.9	67.4	67.1	67.7	80.7	80.1	81.2
2009	70.3	66.7	74.1	48.3	33.3	72.7	42.4	48.0	25.0	47.1	41.3	59.7	59.1	58.4	60.1	70.2	68.4	72.0	80.3	78.7	81.5

Initial observations in cohort are small for some GPA categories

Cohort 2006 and 2007 are Core GPA with a range capped at 4.0; 2008 -2014 are not capped .