

Retention and Graduation Report: Freshman Cohorts

University of Tennessee, Knoxville

February 2018

Introduction

Retention and graduation rates are two metrics used to assess the success of students. Students are followed from the day they first enroll to the completion of their first degree. At the University of Tennessee, Knoxville (UTK), students are followed each fall of their undergraduate study. The student's cohort (group of students classified by certain distinguishing characteristics) is comprised of all students entering college for the first time at a freshman level who are attending full time (FTFT cohort). The first fall is the initial cohort and every subsequent fall after that a student either continues with his/her studies (retained), has graduated, transfers or stops out / drops out. Students who attend the summer prior and are enrolled full-time are included in the fall cohort.

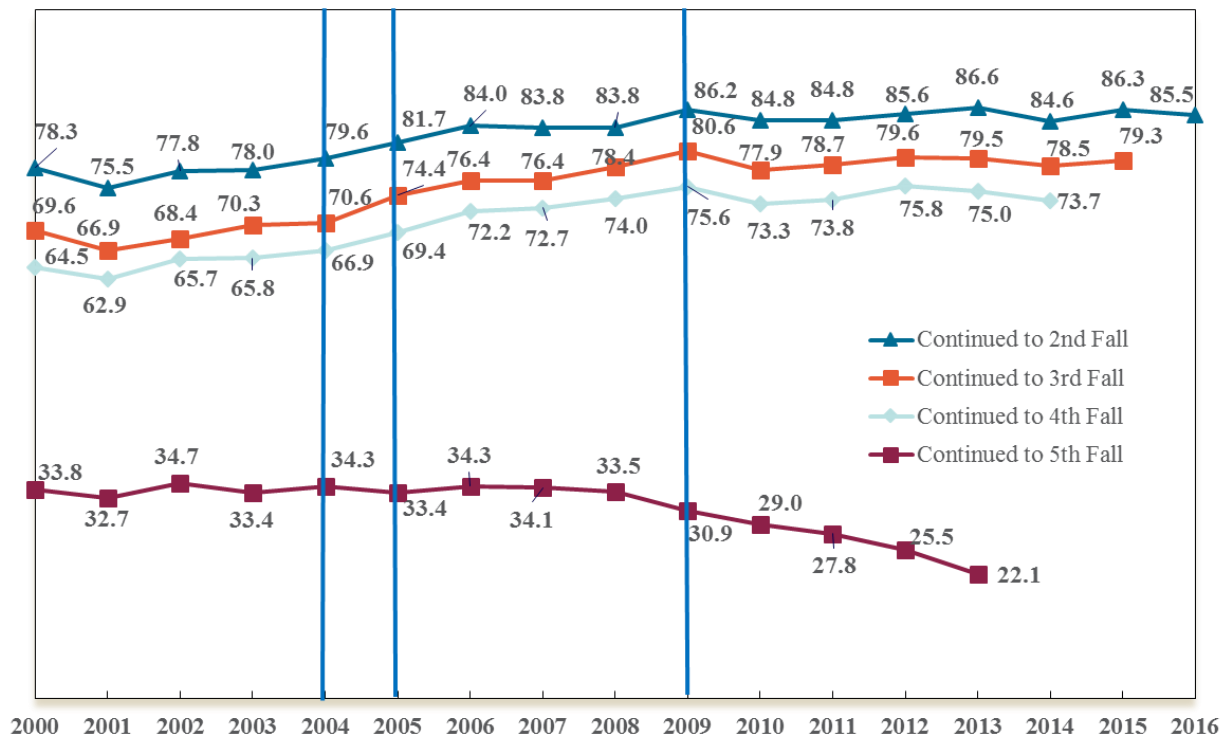
At the University of Tennessee, most of the first-time freshmen are full time (99.6%) with 12 or more credit hours. First-time part-time freshman have an average of 15 people across cohorts with a maximum of 20 students in 2007 and a minimum of 10 students in 2012 (Table 1), so this report will only focus on the FTFT freshmen.

The cohorts are broken down by gender, race/ethnicity, minority status, Tennessee residency status, ACT Equivalent score and high school grade point average. The data is summarized to describe trends in the cohorts over time. Most trends will be analyzed over the last ten years' (2007-2016) cohorts. This report emphasizes the rates of FTFT cohorts returning to the second year and the FTFT students who graduate within six years.

Overall Trends in Retention and Graduation

- First-time full-time (FTFT) freshman UTK cohort retention rates increased from cohort 2000 to cohort 2016. Rates for students continuing to the 2nd, 3rd and 4th falls increased by 7.2, 9.7 and 9.2 percent, respectively (Figure 1). However, from 2009 to 2016, the 2nd year continuation rates are flat, as are the 3rd and 4th year continuation rates (Figure 1).

Figure 1. First-time full-time freshman (FTFT) retention rates (%), fall cohorts 2000 to 2016.



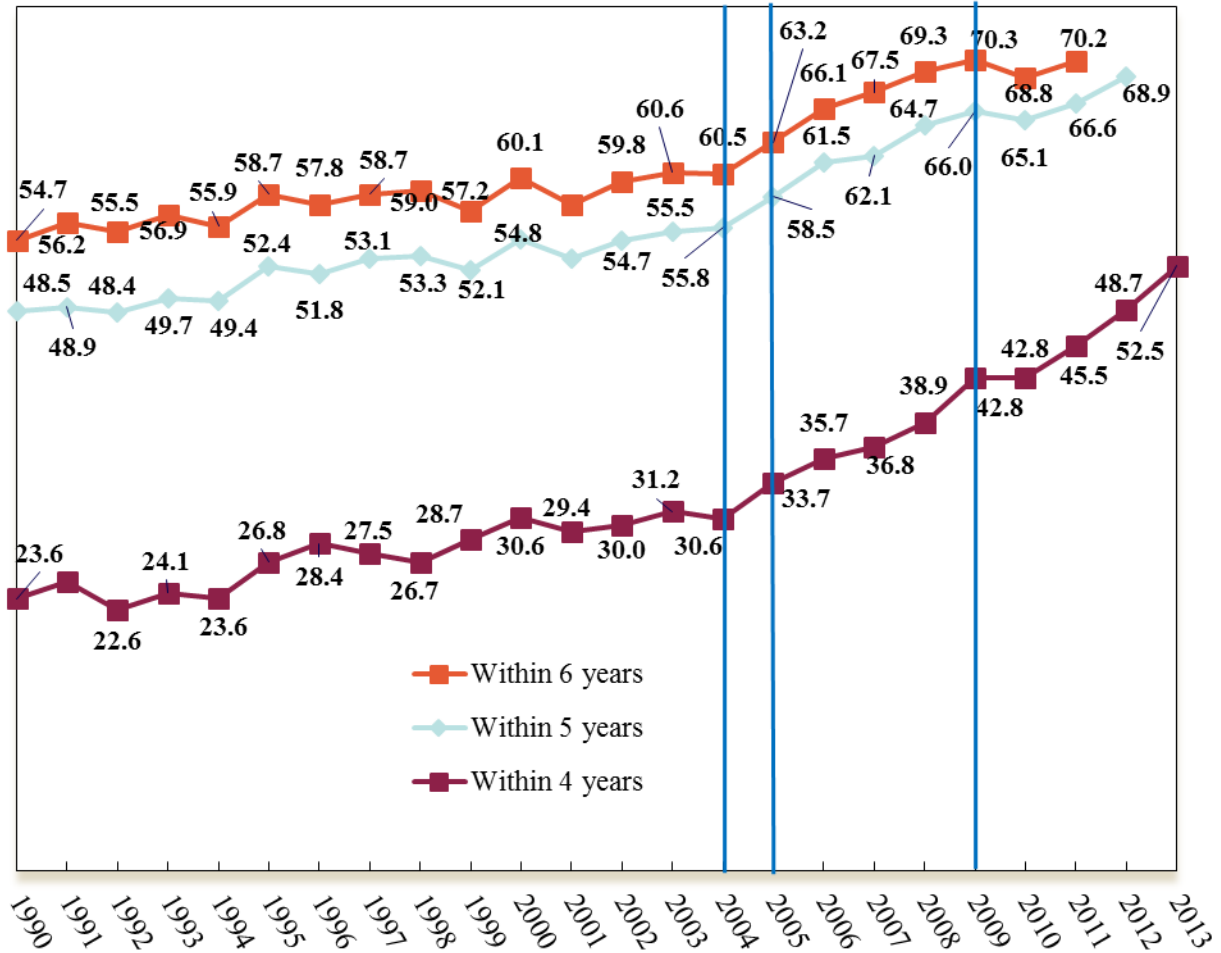
Events

- 2004 - 1st Year of Hope scholarship
- 2005 - Student Success Center
- 2009 - Merit Scholarship changed in 2009 & enrollment increased

Source: OIRA

- UTK FTFT freshman graduation rates increased from cohort 1990 to cohort 2013. Students' cumulative four-year and six-year graduation rates increased by 28.9 percent and 15.5 percent across the 1990-2013 cohorts. The majority of this gain occurred after 2004 (initiation of the Lottery and the Student Success Center) with the four and six-year cumulative graduation rates increasing by 21.9 percent and 9.7 percent, respectively (Figure 2).

Figure 2. Four, five and six-year cumulative graduation rates (%) for first-time full-time (FTFT), freshman fall cohorts 1990 to 2013.



Events

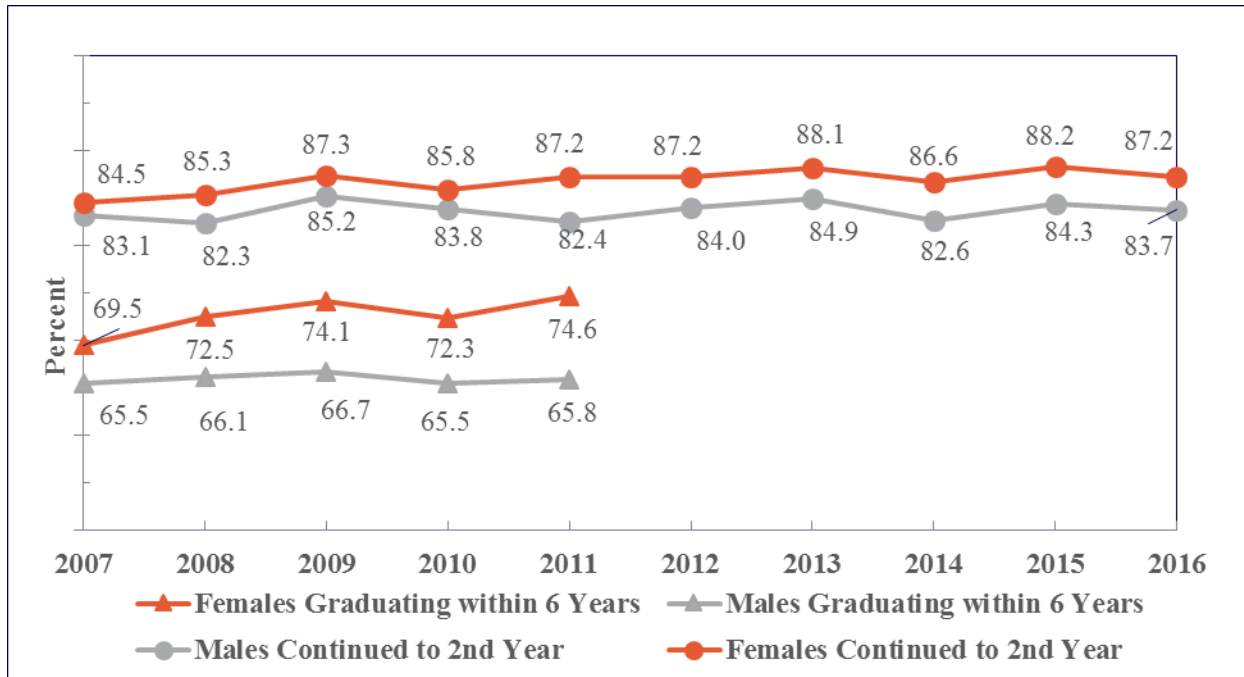
2004 - 1st Year of Hope scholarship
 2005 - Student Success Center
 2009 - Merit Scholarship changed in 2009
 & enrollment increased
 Note: Graduation rates are cumulative

Source: OIRA

Gender

- Females have higher average four and six-year graduation rates (52.5 and 72.6 percent, respectively) when compared to males (35.4 and 65.9, respectively) for the 2007 to 2013 cohorts (Figure 3, Table 3).
- For cohort years 2007-2016, females average a higher rate (86.7 percent) of re-enrolling in the fall of the second year than males (83.6 percent) (Figure 3, Table 3).

Figure 3. Retention and graduation rates (%) for first-time full-time freshman (FTFT) by gender, fall cohorts 2007-2016.



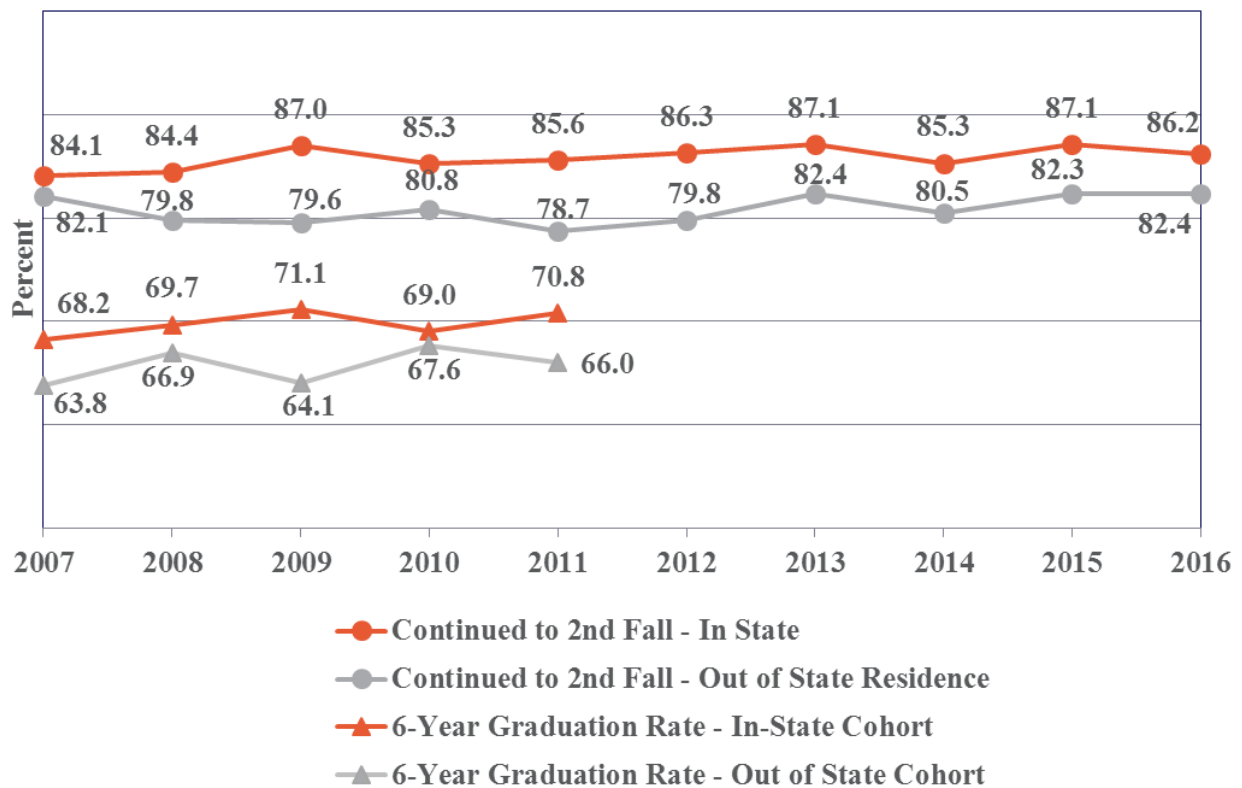
Source: OIRA

In-State / Out-of-State Students

Students who are United States citizens or permanent residents and list Tennessee as their permanent address are considered In-State students. Out-of State students are people from other states and non-resident aliens.

- On average, In-State FTFT freshman students continue to the 2nd fall at a higher average rate (85.8 percent) than Out-of-State students (80.9 percent) across the 2007-2016 cohorts. (Figure 4, Appendix: Table 3).
- Students in the In-State group have higher average six-year graduation rates (69.8 percent) than those students who are in the Out-of-State group (65.7 percent). However, Out-of-State students have a higher average four-year rate (44.5 percent) than In-State (43.9 percent) (Figure 4, Appendix: Table 3).

Figure 4. Retention and graduation rates (%) for first-time full-time freshman (FTFT) by in-state residence status, fall cohorts 2007-2016.



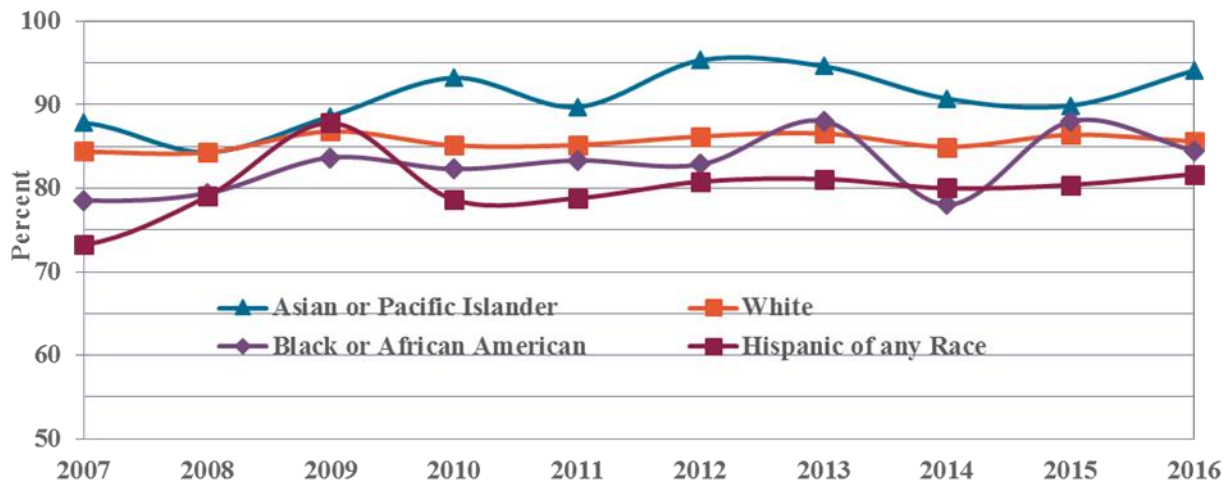
Source: OIRA

Ethnicity and Race

UTK uses the federal definition for race/ethnicity, which separates non-citizens into a Non-Resident Alien group. U.S. citizens are first categorized as Hispanic and Non-Hispanic. The Non-Hispanics are then further categorized by race. The overall reporting groups are Non-Resident Alien, Hispanic of Any Race, Black or African American, Asian or Pacific Islander, American Indian or Alaska Native, White, Two or More Races and Unkown.

- White students account for an average of 80.5 percent of the FTFT freshman for the last ten cohorts (2007-2016).
- Black or African American, Asian or Pacific Islander and Hispanic of Any Race students make up the next largest three groups at 7.7, 4.5 and 3.0 percent of FTFT population over the ten year period.
- Asian or Pacific Islander students have the highest second fall rate of return across the 2007–2016 cohort at 90.8 percent. (Figure 5, Table 4).

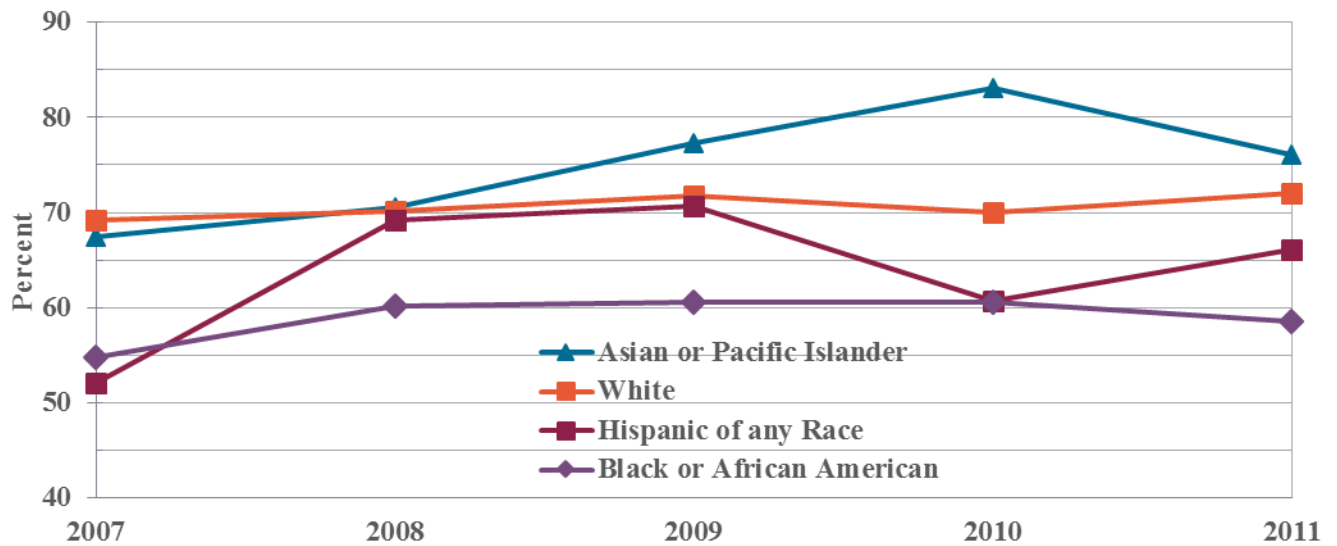
Figure 5. Retention rates for first-time full-time freshman (FTFT) by race/ethnicity, fall cohorts 2007-2016.



Source: OIRA

- Overall, Asian or Pacific Islander students have the highest average six-year cumulative graduation rate at 74.9 percent. White students' six-year graduation rate across cohort years averages 70.6 percent (Figure 6, Appendix: Table 4).
- Asian or Pacific Islander students have the highest average four-year graduation rate at 48.1 percent, closely followed by White students at 45.4 percent (Table 4).

Figure 6. Cumulative six-year graduation rates for first-time full-time freshman (FTFT) by race/ethnicity, fall cohorts 2007–2011.



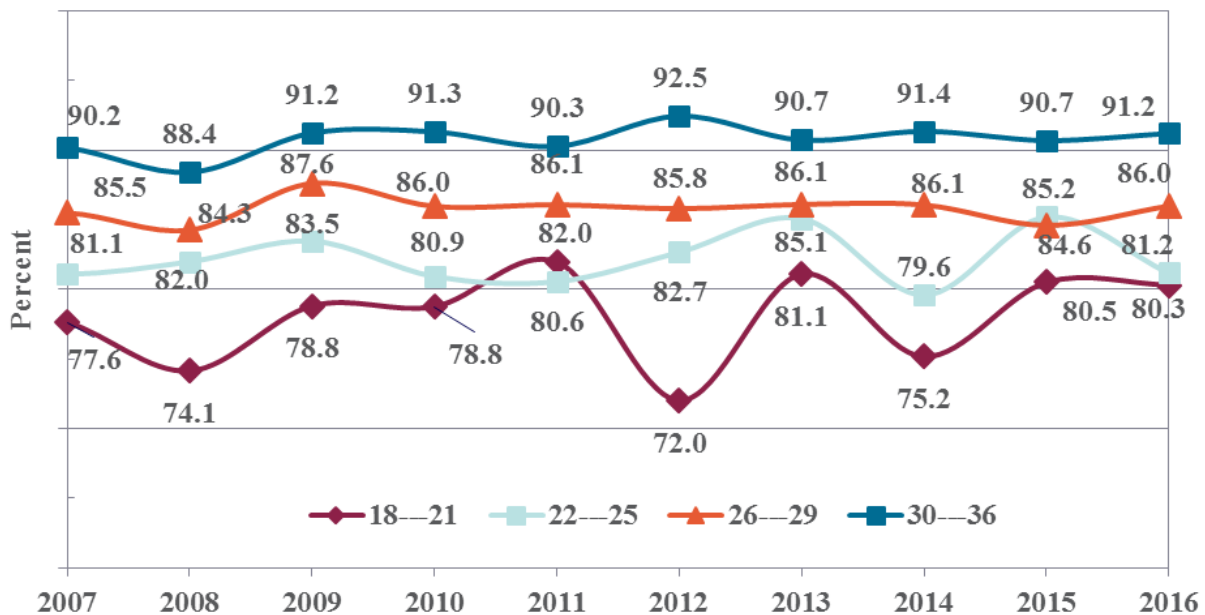
Source: OIRA

ACT Equivalent Scores

ACT Equivalent is the higher of the Comprehensive ACT score or Total SAT score converted to ACT scale.

- FTFT students at UTK most often have ACT Equivalent scores between 22 and 36 (93.7 percent average for 2007-2016 cohorts) (Appendix: Table 1).
- Across the 2007-2016 cohort years, students continue to the 2nd fall on average at a rate of 85.8 percent for the 22-25 ACT score group, 85.7 percent for the 26-29 ACT score group and 90.8 percent for the 30-36 ACT score group (Figure 7, Appendix: Table 5).

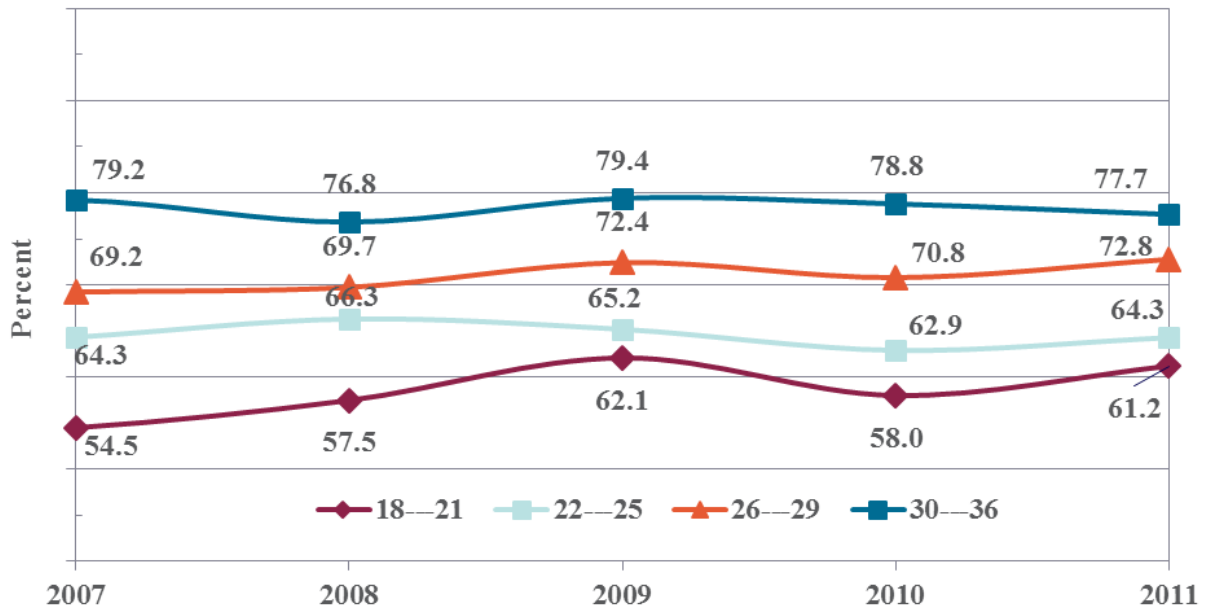
Figure 7. Retention rates (%) of first-time full-time freshman students who continue to the second fall by ACT Equivalent scores, fall cohorts 2007-2016.



Source: OIRA

- As ACT Equivalent scores increase, so does the six-year cumulative graduation rate for FTFT freshman in cohorts 2007-2011 (Figure 8). The average six year cumulative graduation rates across the 2007-2011 cohorts show that the ACT Equivalent score group of 30-36 has the highest rate at 78.4 percent (Table 5).

Figure 8. Cumulative six-year graduation rates (%) of FTFT freshman, by ACT Equivalent scores, fall cohorts 2007-2011.

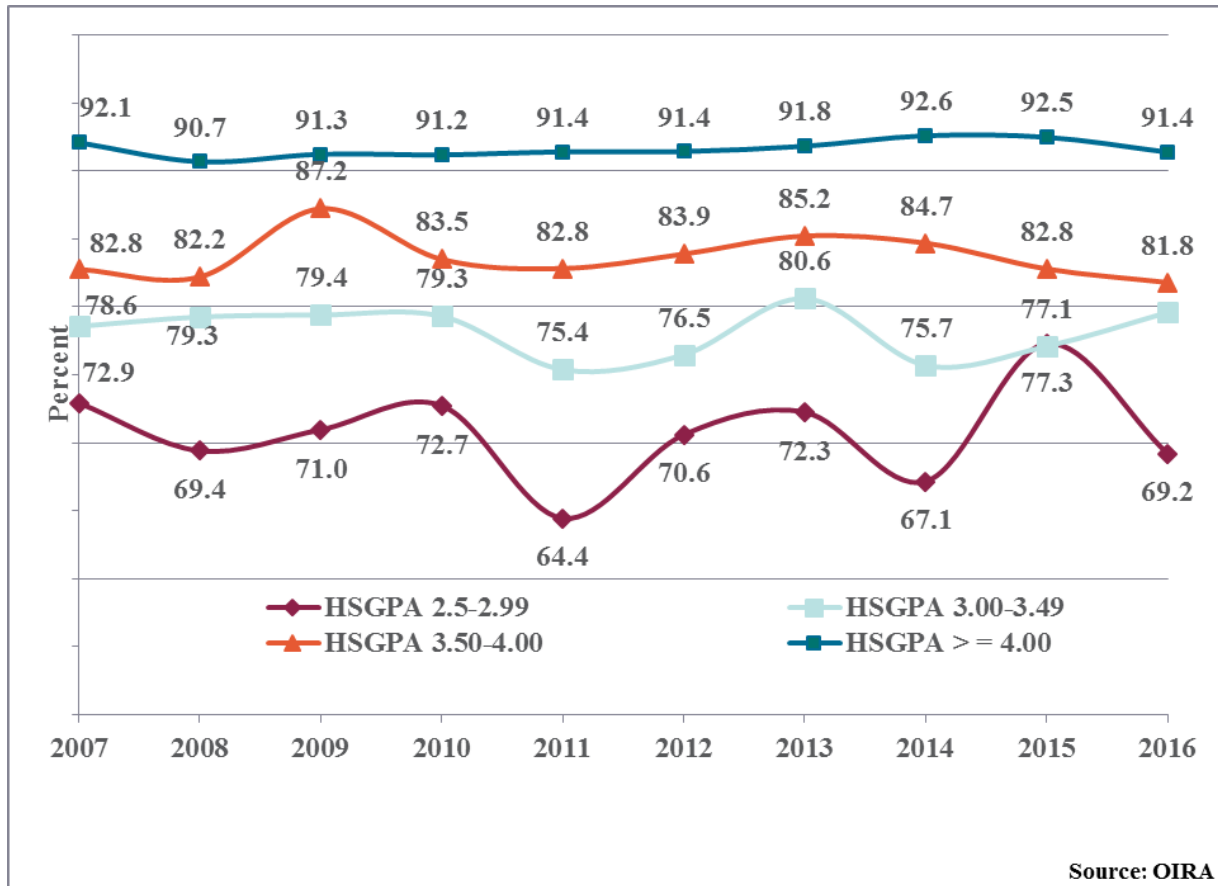


Source: OIRA

High School Grade Point Average (HSGPA)

- The majority of FTFT freshman students from 2007-2016 have a core HSGPA greater than or equal to 3.0 (92.8 percent of students) (Table 1).
- FTFT freshman who have a core HSGPA of 4.0 or above have the highest 2nd fall continuation rate at 91.6 percent, followed by the 3.5-4.0 HSGPA group at 83.7 percent and the HSGPA group of 3.0-3.49 at 78.1 percent (Figure 9, Table 6).

Figure 9. Retention rates (%) of first-time full-time freshman (FTFT) that continue to second fall by core high school GPA categories, fall cohorts 2007-2016.



- Six-year cumulative graduation rates consistently increase with higher core HSGPA within a cohort year. (Figure 10, Appendix: Table 6).
- Average four-year cumulative graduation rates by HSGPA group are highest for the 4.0 and above group at 56.9 percent.

Figure 10. Cumulative six-year graduation rates (%) of FTFT freshman by core high school GPA categories, fall cohorts 2007-2011.

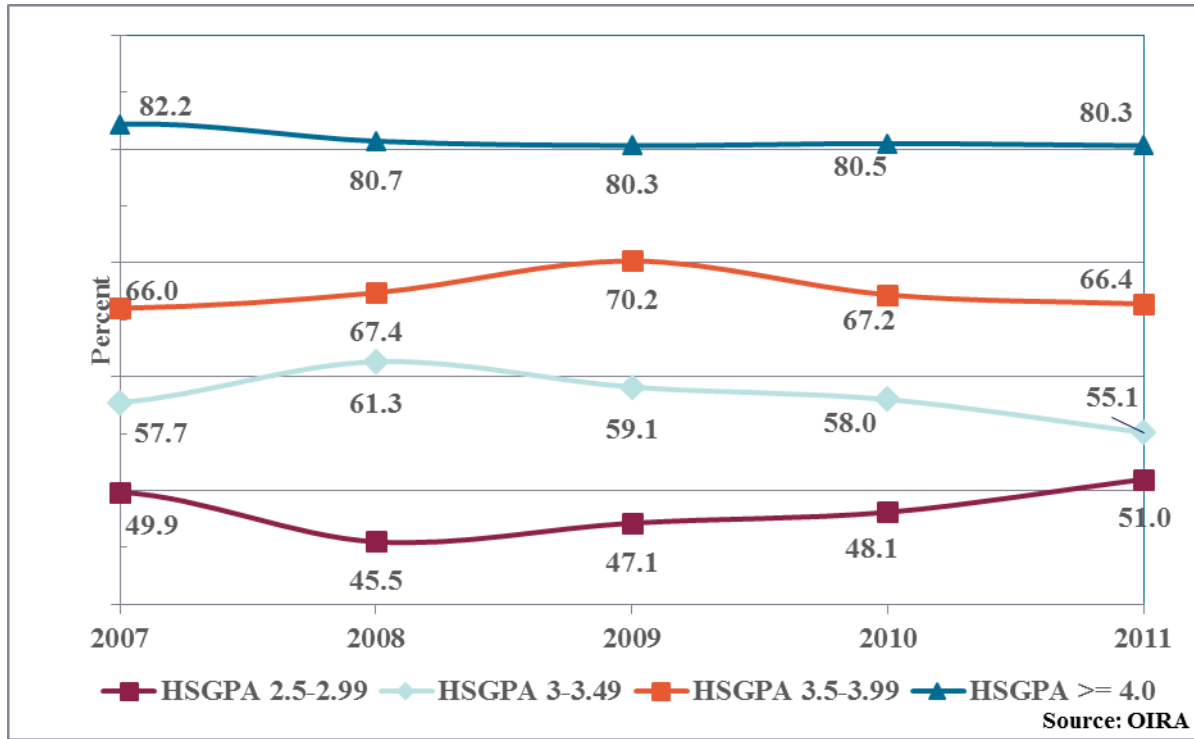


Table 1. Initial number of students in first-time full-time (FTFT) cohorts by gender, race/ethnicity/minority status, residency, ACT Equivalent scores and core high school grade point average (HS_GPA), fall cohorts 2007-2016.

Cohort Type	Start in 2007	Start in 2008	Start in 2009	Start in 2010	Start in 2011	Start in 2012	Start in 2013	Start in 2014	Start in 2015	Start in 2016	Average (n)	Trend
-----Overall-----											Average (n)	Trend <i>aaa</i>
Total	4,331	4,199	3,698	4,199	4,175	4,196	4,261	4,689	4,700	4,840	4,329	
-----Gender-----											Average (n)	Trend
Female	2,215	2,117	1,831	2,062	2,110	2,143	2,179	2,350	2,407	2484	2,190	
Male	2,116	2,082	1,867	2,137	2,065	2,053	2,082	2,339	2,293	2356	2,139	
-----Tennessee Residence-----											Average (n)	Trend
In State	3,684	3,634	3,286	3,724	3,705	3,770	3,733	4,008	3,885	3,969	3,740	
Out of State	647	565	412	475	470	426	528	681	815	871	589	
-----Race/Ethnicity-----											Average (n)	Trend
Hispanic of any Race	71	81	82	117	118	151	127	180	163	191	128	
Black or African American	387	301	337	322	318	344	318	355	324	317	332	
White	3,640	3,636	2,982	3,416	3,374	3,356	3,401	3,637	3,613	3792	3,485	
Asian or Pacific Islander	123	102	88	118	117	107	130	140	169	203	130	
American Indian or Alaskan Native	10	19	8	7	9	11	10	9	13	11	11	
Two or More Races			107	140	140	126	118	160	138	162	136	
Nonresident Alien	39	31	48	41	63	22	49	71	85	72	52	
Unknown	61	29	46	38	36	79	108	137	195	92	82	
URM^a	468	401	534	586	585	632	573	704	638	681	580	
-----ACT Equivalent Score -----											Average (n)	Trend
None	24	10	35	15	22	13	24	50	53	46	29	
Less than 18	16	14	20	16	6	10	13	10	15	14	13	
18 - 21	389	174	269	226	183	193	201	157	236	259	229	
22 - 25	1,646	1,459	1,192	1,510	1,445	1,385	1,408	1,739	1,517	1,582	1,488	
26 - 29	1,544	1,722	1,429	1,568	1,624	1,667	1,612	1,622	1,633	1,585	1,601	
30 - 36	712	820	753	864	895	928	1,003	1,111	1,246	1,354	969	
	Core HS_GPA	-----Core HS_GPA Uncapped-----									Average (n)	Trend
No GPA	25	22	29	24	20	54	66	67	80	64	45	
Below 2.50	69	28	33	21	11	11	40	70	19	16	32	
2.50 - 2.99	351	301	210	231	149	102	191	347	233	224	234	
3.00 - 3.49	994	892	709	962	719	693	774	901	794	854	829	
3.50 - 3.99	1,498	1,355	1,254	1,370	1,363	1,385	1,266	1,314	1,306	1,372	1,348	
4.00 and Greater	1,394	1,601	1,463	1,591	1,913	1,951	1,924	1,990	2,268	2,310	1,841	

^a URM - (Under Represented Minority) is Black or African Americans, Two or More Races and American Indian or Alaska Native students.

Table 2. Initial number of students in first-time part-time (FTPT) cohorts by gender, race/ethnicity/minority status, residency, ACT Equivalent scores and core high school grade point average (HS_GPA), fall cohorts 2007-2016.

Cohort Type	Start in 2007	Start in 2008	Start in 2009	Start in 2010	Start in 2011	Start in 2012	Start in 2013	Start in 2014	Start in 2015	Start in 2016	Average (n)	Trend aaa
-----Overall-----												
Total	20	15	19	15	13	10	15	12	19	11	14.9	
-----Gender-----												
Average Trend												
(n)												
Female	11	5	13	7	4	4	9	4	8	6	7.1	
Male	9	10	6	8	9	6	6	8	11	5	7.8	
-----Tennessee Residence-----												
Average Trend												
(n)												
In State	16	13	15	12	8	8	8	11	16	11	11.8	
Out of State	4	2	4	3	5	2	7	1	3	0	3.1	
-----Race/Ethnicity-----												
Average Trend												
(n)												
Hispanic of any Race	0	0	0	1	2	1	0	0	1	0	3.5	
Black or African American	0	2	2	2	1	0	0	1	3	2	0.6	
White	18	11	14	12	7	7	11	9	12	7	1.8	
Asian or Pacific Islander	1	0	0	0	0	1	0	2	0	0	4.1	
American Indian or Alaskan Native	0	0	0	0	0	0	0	0	0	0	3.9	
Two or More Races	0	0	0	0	0	1	0	0	0	0	2.8	
Nonresident Alien	0	1	0	0	3	0	3	0	1	0	0.8	
Unknown	1	1	3	0	0	0	1	0	2	2	1.0	
URM^a	0	2	2	3	3	2	0	1	4	2	1.9	
-----ACT Equivalent Score -----												
Average Trend												
(n)												
None	1	2	6	3	4	1	4	0	2	0	2.3	
Less than 18	0	0	0	1	0	0	0	0	0	0	0.1	
18 - 21	2	1	1	0	0	1	0	0	0	2	0.7	
22 - 25	11	7	3	5	5	5	5	6	10	4	6.1	
26 - 29	3	5	4	3	3	1	5	2	5	3	3.4	
30 - 36	3	0	5	3	1	2	1	4	2	2	2.3	
-----Core HS_GPA Uncapped-----												
Average Trend												
(n)												
No GPA	3	6	8	3	3	10	3	0	1	0	3.7	
Below 2.50	1	0	1	0	1	0	1	2	1	0	0.7	
2.50 - 2.99	2	3	1	2	0	0	3	3	2	0	1.6	
3.00 - 3.49	6	4	3	4	2	7	1	1	6	2	3.6	
3.50 - 3.99	7	1	4	4	5	3	4	2	4	6	4.0	
4.00 and Greater	1	1	2	2	2	0	3	4	5	3	2.3	

^a URM - (Under Represented Minority) is Black or African Americans, Two or More Races and American Indian or Alaska Native students.

Table 3. Retention and graduation rates for first-time full-time freshman (FTFT) by overall, gender and Tennessee residency status, fall cohorts 2007-2016.

Cohort Year		2007	2008	2009	2010	2011	2012	2013	2014	2015	2016			
		-----Total-----										Change	Average	Trend
Number in Initial Cohort		4331	4199	3698	4199	4175	4196	4261	4689	4700	4840	509	4329	
% Continued	to 2 nd Fall	83.8	83.8	86.2	84.8	84.8	85.6	86.6	84.6	86.3	85.5	1.7	85.2	
	to 3 rd Fall	76.4	78.4	80.6	77.9	78.7	79.6	79.5	78.5	79.3		2.9	78.8	
	to 4 th Fall	72.7	74.0	75.6	73.3	73.8	75.8	75.0	73.7			1.0	74.2	
	to 5 th Fall	34.1	33.5	30.9	29.0	27.8	25.5	22.1				-12.0	29.0	
% Graduation	4 - Year	36.8	38.9	42.8	42.8	45.5	48.7	52.5				15.7	44.0	
	5 - Year	62.1	64.7	66.0	65.1	66.6	68.9					6.8	65.6	
	6 - Year	67.5	69.3	70.3	68.8	70.2						2.7	69.2	
		-----Female-----										Change	Average	Trend
Number in Initial Cohort		2215	2117	1831	2062	2110	2143	2179	2350	2407	2484	269	2190	
% Continued	to 2 nd Fall	84.5	85.3	87.3	85.8	87.2	87.2	88.1	86.6	88.2	87.2	2.7	86.7	
	to 3 rd Fall	77.1	79.4	81.7	79.5	81.2	81.1	81.0	80.2	82.0		4.9	80.3	
	to 4 th Fall	72.7	75.1	76.7	74.3	75.5	77.0	76.0	75.4			2.7	75.3	
	to 5 th Fall	27.8	26.5	23.6	23.2	20.9	19.4	16.1				-11.7	22.5	
% Graduation	4 - Year	43.6	47.9	52.8	50.4	55.2	57.4	60.2				16.6	52.5	
	5 - Year	65.5	69.7	71.7	69.7	72.4	73.4					7.9	70.4	
	6 - Year	69.5	72.5	74.1	72.3	74.6						5.1	72.6	
		-----Male-----										Change	Average	Trend
Number in Initial Cohort		2116	2082	1867	2137	2065	2053	2082	2339	2293	2356	240	2139	
% Continued	to 2 nd Fall	83.1	82.3	85.2	83.8	82.4	84.0	84.9	82.6	84.3	83.7	0.6	83.6	
	to 3 rd Fall	75.8	77.3	79.5	76.4	76.2	78.0	78.0	76.7	76.5		0.7	77.1	
	to 4 th Fall	72.6	72.9	74.6	72.3	72.1	74.5	74.0	72.0			-0.6	73.1	
	to 5 th Fall	40.7	40.6	38.0	34.5	34.8	31.8	28.4				-12.3	35.6	
% Graduation	4 - Year	29.6	29.8	33.0	35.5	35.6	39.6	44.4				14.8	35.4	
	5 - Year	58.5	59.7	60.3	60.7	60.7	64.3					5.8	60.7	
	6 - Year	65.5	66.1	66.7	65.5	65.8						0.3	65.9	

Table 3 Continued. Retention and graduation rates for first-time full-time freshman (FTFT) by overall, gender and Tennessee residence status, fall cohorts 2007-2016.

Cohort Year		2007	2008	2009	2010	2011	2012	2013	2014	2015	2016	Change	Average	Trend
-----In State-----												Change	Average	Trend
Number in Initial Cohort		3684	3634	3286	3724	3705	3770	3733	4008	3885	3421	-263	3685	
% Continued	to 2 nd Fall	84.1	84.4	87.0	85.3	85.6	86.3	87.1	85.2	87.1	86.2	2.1	85.8	
	to 3 rd Fall	77.1	79.0	81.5	78.4	79.6	80.4	80.5	79.3	80.5		3.4	79.6	
	to 4 th Fall	73.5	74.7	76.9	73.8	74.7	76.8	75.8	74.7			1.2	75.1	
	to 5 th Fall	35.0	34.2	31.9	29.7	28.7	26.5	22.4				-12.6	29.8	
% Graduation	4 - Year	36.7	38.6	42.8	42.5	45.4	48.6	53.0				16.3	43.9	
	5 - Year	62.5	65.0	66.6	65.1	67.0	69.7					7.2	66.0	
	6 - Year	68.2	69.7	71.1	69.0	70.8						2.6	69.8	
-----Out of State-----												Change	Average	Trend
Number in Initial Cohort		647	565	412	475	470	426	528	681	815	871	224	589	
% Continued	to 2 nd Fall	82.1	79.8	79.6	80.8	78.7	79.8	82.4	80.9	82.3	82.4	0.3	80.9	
	to 3 rd Fall	72.8	74.2	73.1	73.7	71.7	72.8	72.5	73.7	73.4		0.6	73.1	
	to 4 th Fall	68.3	69.7	65.3	69.1	66.8	66.9	69.3	68.0			-0.3	67.9	
	to 5 th Fall	29.2	28.7	23.3	23.4	20.4	16.7	20.1				-9.1	23.1	
% Graduation	4 - Year	37.2	41.4	42.5	45.7	46.6	49.3	48.9				11.7	44.5	
	5 - Year	59.5	62.8	60.9	65.5	63.4	62.2					2.7	62.4	
	6 - Year	63.8	66.9	64.1	67.6	66.0						2.2	65.7	

Table 4. Retention and graduation rates for first-time full-time freshman (FTFT) by ethnicity and race for cohorts 2007-2016.

Cohort Year		2007	2008	2009	2010	2011	2012	2013	2014	2015	2016	Change	Average	Trend
		-----American Indian or Alaska Native-----												
Number in Initial Cohort		10	19	8	7	9	11	10	9	13	11	1	11	
% Continued	to 2 nd Fall	70.0	78.9	62.5	71.4	66.7	72.7	70.0	77.8	76.9	72.7	2.7	72.0	
	to 3 rd Fall	70.0	78.9	62.5	71.4	66.7	63.6	60.0	66.7	69.2		-0.8	67.7	
	to 4 th Fall	60.0	78.9	37.5	57.1	55.6	72.7	70.0	77.8			17.8	63.7	
	to 5 th Fall	30.0	42.1	37.5	14.3	22.2	27.3	10.0				-20.0	26.2	
% Graduation	4 - Year	30.0	15.8	12.5	42.9	22.2	36.4	60.0				30.0	31.4	
	5 - Year	40.0	47.4	37.5	57.1	33.3	63.6					23.6	46.5	
	6 - Year	50.0	63.2	37.5	57.1	33.3						-16.7	48.2	
		-----Asian or Pacific Islander-----												
Number in Initial Cohort		123	102	88	118	117	107	130	140	169	203	80	130	
% Continued	to 2 nd Fall	87.8	84.3	88.6	93.2	89.7	95.3	94.6	90.7	89.9	94.1	6.3	90.8	
	to 3 rd Fall	79.7	76.5	88.6	90.7	85.5	91.6	85.4	85.7	83.4		3.7	85.2	
	to 4 th Fall	72.4	71.6	84.1	86.4	78.6	87.9	83.1	80.0			7.6	80.5	
	to 5 th Fall	32.5	27.5	40.9	32.2	35.9	29.0	21.5				-11.0	31.4	
% Graduation	4 - Year	41.5	44.1	39.8	50.8	45.3	54.2	60.8				19.3	48.1	
	5 - Year	64.2	62.7	70.5	79.7	70.1	74.8					10.6	70.3	
	6 - Year	67.5	70.6	77.3	83.1	76.1						8.6	74.9	
		-----Black or African American-----												
Number in Initial Cohort		387	301	337	322	318	344	318	355	324	317	-70	332	
% Continued	to 2 nd Fall	78.6	79.4	83.7	82.3	83.3	82.8	88.1	78.0	88.0	84.5	6.0	82.9	
	to 3 rd Fall	72.4	73.8	76.9	73.6	78.6	74.7	76.7	71.5	77.2		4.8	75.0	
	to 4 th Fall	65.9	69.4	71.2	67.7	70.4	69.5	72.0	66.5			0.6	69.1	
	to 5 th Fall	34.6	38.2	39.2	30.1	32.4	24.4	26.4				-8.2	32.2	
% Graduation	4 - Year	25.1	26.6	29.1	34.5	34.3	40.4	42.5				17.4	33.2	
	5 - Year	47.8	52.2	55.8	55.3	53.1	60.2					12.4	54.1	
	6 - Year	54.8	60.1	60.5	60.6	58.5						3.7	58.9	
		-----Hispanic of any Race-----												
Number in Initial Cohort		71	81	82	117	118	151	127	180	163	191	120	128	
% Continued	to 2 nd Fall	73.2	79.0	87.8	78.6	78.8	80.8	81.1	80.0	80.4	81.7	8.4	80.1	
	to 3 rd Fall	70.4	74.1	80.5	76.1	72.0	76.8	73.2	73.9	74.2		3.8	74.6	
	to 4 th Fall	62.0	77.8	76.8	65.0	68.6	73.5	68.5	69.4			7.4	70.2	
	to 5 th Fall	21.1	34.6	36.6	31.6	30.5	28.5	22.0				0.9	29.3	
% Graduation	4 - Year	38.0	38.3	39.0	30.8	36.4	44.4	44.9				6.9	38.8	
	5 - Year	50.7	61.7	65.9	55.6	58.5	66.2					15.5	59.8	
	6 - Year	52.1	69.1	70.7	60.7	66.1						14.0	63.8	

Table 4, continued. Retention and graduation rates for first-time full-time freshman by ethnicity and race for cohorts 2007-2016.

Cohort Year		2007	2008	2009	2010	2011	2012	2013	2014	2015	2016	Change	Average	Trend
-----Two or More Races-----														
Number in Initial Cohort			107	140	140	126	118	160	138	162		162	136	
% Continued	to 2 nd Fall		76.6	80.0	80.7	77.0	82.2	82.5	83.3	79.0		79.0	80.2	
	to 3 rd Fall		69.2	70.7	70.7	73.8	78.0	73.1	76.8		76.8	73.2		
	to 4 th Fall		66.4	61.4	65.7	72.2	76.3	68.8		68.8	68.5			
	to 5 th Fall		33.6	27.9	27.9	23.0	23.7		23.7	27.2				
% Graduation	4 - Year		30.8	30.7	34.3	46.0	47.5		47.5	37.9				
	5 - Year		53.3	52.1	55.7	64.3		64.3	56.3					
	6 - Year		59.8	55.7	56.4		56.4	57.3						
-----Nonresident Alien-----														
Number in Initial Cohort		39	31	48	41	63	22	49	71	85	72	33	52	
% Continued	to 2 nd Fall	87.2	90.3	87.5	78.0	90.5	90.9	79.6	93.0	85.9	88.9	1.7	87.2	
	to 3 rd Fall	84.6	77.4	77.1	70.7	77.8	77.3	77.6	81.7	74.1		-10.5	77.6	
	to 4 th Fall	76.9	77.4	70.8	70.7	76.2	72.7	75.5	74.6		-2.3	74.4		
	to 5 th Fall	33.3	48.4	31.3	29.3	27.0	13.6	12.2		-21.1	27.9			
% Graduation	4 - Year	35.9	32.3	45.8	36.6	47.6	59.1	59.2		23.3	45.2			
	5 - Year	69.2	67.7	68.8	63.4	68.3	68.2		-1.0	67.6				
	6 - Year	71.8	71.0	75.0	63.4	74.6		2.8	71.2					
-----Unknown-----														
Number in Initial Cohort		61	29	46	38	36	79	108	137	195	92	31	82	
% Continued	to 2 nd Fall	85.2	79.3	82.6	94.7	77.8	83.5	88.0	90.5	86.2	85.9	0.6	85.4	
	to 3 rd Fall	72.1	69.0	71.7	84.2	66.7	82.3	88.9	84.7	79.5		7.4	77.7	
	to 4 th Fall	67.2	62.1	65.2	71.1	63.9	72.2	83.3	78.8		11.6	70.5		
	to 5 th Fall	36.1	31.0	30.4	28.9	19.4	26.6	24.1		-12.0	28.1			
% Graduation	4 - Year	29.5	34.5	32.6	44.7	44.4	49.4	57.4		27.9	41.8			
	5 - Year	62.3	58.6	58.7	68.4	52.8	72.2		9.9	62.2				
	6 - Year	63.9	62.1	60.9	73.7	58.3		-5.6	63.8					
-----White-----														
Number in Initial Cohort		3640	3636	2982	3416	3374	3356	3401	3637	3613	3792	152	3485	
% Continued	to 2 nd Fall	84.4	84.3	86.8	85.1	85.2	86.2	86.6	85.0	86.4	85.6	1.2	85.6	
	to 3 rd Fall	76.9	79.0	81.4	78.2	79.2	80.1	79.6	79.0	79.8		2.9	79.3	
	to 4 th Fall	73.7	74.4	76.5	74.2	74.6	76.4	74.9	74.4		0.7	74.9		
	to 5 th Fall	34.3	33.1	29.4	28.7	27.1	25.5	21.8		-12.5	28.6			
% Graduation	4 - Year	38.0	40.0	45.2	44.3	47.4	49.6	53.3		15.3	45.4			
	5 - Year	63.7	66.0	67.6	66.4	68.8	69.9		6.2	67.1				
	6 - Year	69.3	70.1	71.8	70.0	72.0		2.7	70.6					

Table 4, continued. Retention and graduation rates for first-time full-time freshman by ethnicity and race for cohorts 2007-2016.

		2007	2008	2009	2010	2011	2012	2013	2014	2015	2016	Change	Average	Trend
		-----Under- Represented Minority-----												
Number in Initial Cohort		468	401	534	586	585	632	573	704	638	681	213	580	
% Continued	to 2 nd Fall	77.6	79.3	82.6	80.9	81.5	81.0	85.0	79.5	84.8	82.2	4.6	81.4	
	to 3 rd Fall	72.0	74.1	74.9	73.4	75.2	74.8	75.9	72.4	76.2		4.2	74.3	
	to 4 th Fall	65.2	70.6	70.6	65.5	68.7	71.0	72.1	67.9			2.7	69.0	
	to 5 th Fall	31.8	37.7	37.6	29.7	30.8	25.2	24.6				-7.2	31.1	
% Graduation	4 - Year	27.1	28.4	30.7	32.9	34.5	42.4	44.3				17.2	34.3	
	5 - Year	48.1	53.9	56.6	54.6	54.5	62.5					14.4	55.0	
	6 - Year	54.3	62.1	61.6	59.4	59.1						4.8	59.3	

^a URM - (Under Represented Minority) is Black or African Americans, Two or More Races and American Indian or Alaska Native students.

Table 5. Retention and graduation rates for UTK first-time full-time freshman (FTFT) students by core high school GPA, fall cohorts 2007-2016.

Cohort Year		2007	2008	2009	2010	2011	2012	2013	2014	2015	2016			
		-----None-----												
		Core HS GPA	-----Core HS GPA Uncapped-----									Change	Average	Trend
Number in Initial Cohort		25	22	29	24	20	54	66	67	80	64	39	45	
% Continued	2nd Fall	84.0	81.8	79.3	83.3	90.0	74.1	81.8	88.1	87.5	89.1	5.1	83.9	
	3rd Fall	72.0	77.3	72.4	66.7	70.0	70.4	71.2	76.1	75.0		3.0	72.3	
	4th Fall	72.0	59.1	55.2	70.8	75.0	66.7	71.2	70.1			-1.9	67.5	
	5th Fall	40.0	18.2	20.7	33.3	30.0	13.0	19.7				-20.3	25.0	
% Graduation	4 - Year	20.0	22.7	34.5	29.2	40.0	48.1	53.0				33.0	35.4	
	5 - Year	52.0	45.5	44.8	54.2	18.2	57.4					5.4	45.3	
	6 - Year	56.0	45.5	48.3	48.3	75.0						19.0	54.6	
		-----Below 2.50-----										Change	Average	Trend
Number in Initial Cohort		69	28	33	21	11	11	40	70	19	16	-53	32	
% Continued	2nd Fall	68.1	67.9	72.7	66.7	63.6	45.5	65.0	52.9	68.4	81.3	13.2	65.2	
	3rd Fall	62.3	57.1	63.6	57.1	54.5	45.5	55.0	51.4	57.9		-4.4	56.1	
	4th Fall	52.2	50.0	54.5	47.6	27.3	18.2	45.0	41.4			-10.8	42.0	
	5th Fall	36.2	28.6	36.4	14.3	18.2	0.0	25.0				-11.2	22.7	
% Graduation	4 - Year	11.6	17.9	9.1	23.8	18.2	9.1	17.5				5.9	15.3	
	5 - Year	31.9	42.9	36.4	33.3	36.4	9.1					-22.8	31.7	
	6 - Year	39.1	42.9	42.4	38.1	36.4						-2.8	39.8	
		-----2.50 - 2.99-----										Change	Average	Trend
Number in Initial Cohort		351	301	210	231	149	102	191	347	233	224	-127	234	
% Continued	2nd Fall	72.9	69.4	71.0	72.7	64.4	70.6	72.3	67.1	77.3	69.2	-3.7	70.7	
	3rd Fall	64.1	60.8	65.2	61.0	61.7	63.7	66.5	61.7	67.8		3.7	63.6	
	4th Fall	59.5	56.5	55.2	56.3	56.4	57.8	60.2	54.8			-4.7	57.1	
	5th Fall	37.9	35.9	31.4	29.0	35.6	22.5	22.5				-15.4	30.7	
% Graduation	4 - Year	17.7	16.9	21.0	23.4	19.5	31.4	34.6				16.9	23.5	
	5 - Year	41.3	41.5	41.4	43.3	41.6	51.0					9.7	43.4	
	6 - Year	49.9	45.5	47.1	48.1	51.0						1.1	48.3	

Table 5, continued. Retention and graduation rates for UTK first-time full-time freshman (FTFT) students by core high school GPA, fall cohorts 2007-2016.

Cohort Year		2007	2008	2009	2010	2011	2012	2013	2014	2015	2016			
		-----3.00 - 3.49-----												
Core HS_GPA		-----Core HS_GPA Uncapped-----										Change	Average	Trend
Number in Initial Cohort		994	892	709	962	719	693	774	901	794	854	-140	829	
% Continued	2nd Fall	78.6	79.3	79.4	79.3	75.4	76.5	80.6	75.7	77.1	79.6	1.0	78.1	
	3rd Fall	70.0	72.9	72.1	69.9	67.2	70.6	71.4	68.1	67.1		-2.9	69.9	
	4th Fall	66.0	68.7	67.4	64.8	61.6	65.4	67.7	64.4			-1.6	65.7	
	5th Fall	35.9	38.8	36.0	32.0	30.7	28.1	25.1				-10.9	32.4	
% Graduation	4 - Year	27.2	28.8	28.9	30.6	28.8	35.1	39.5				12.4	31.3	
	5 - Year	51.8	54.5	53.7	54.3	50.3	54.4					2.6	53.2	
	6 - Year	57.7	61.3	59.1	58.0	55.1						-2.7	58.2	
		-----3.50 -- 4.00-----										Change	Average	Trend
Number in Initial Cohort		1,498	1,355	1,254	1,370	1,363	1,385	1,266	1,314	1,306	1,372	-126	1348	
% Continued	2nd Fall	82.8	82.2	87.2	83.5	82.8	83.9	85.2	84.7	82.8	81.8	-1.0	83.7	
	3rd Fall	74.8	76.5	80.2	76.4	77.0	75.8	77.1	77.1	74.5		-0.3	76.6	
	4th Fall	70.7	72.2	76.3	70.9	71.5	72.6	72.4	73.2			2.5	72.5	
	5th Fall	36.2	33.6	34.5	28.5	29.1	28.7	24.9				-11.3	30.8	
% Graduation	4 - Year	33.0	36.0	39.3	40.9	41.2	41.8	47.2				14.3	39.9	
	5 - Year	60.6	63.0	65.6	63.4	62.7	63.9					3.3	63.2	
	6 - Year	66.0	67.4	70.2	67.2	66.4						0.4	67.4	
		-----Greater or equal to 4.00-----										Change	Average	Trend
Number in Initial Cohort		1,394	1,601	1,463	1,591	1,913	1,951	1,924	1,990	2,268	2,310	916	1841	
% Continued	2nd Fall	92.1	90.7	91.3	91.2	91.4	91.4	91.8	92.6	92.5	91.4	-0.7	91.6	
	3rd Fall	86.6	86.8	87.8	87.0	85.8	86.8	86.4	88.0	87.8		1.2	87.0	
	4th Fall	83.9	82.5	82.8	83.4	81.7	83.2	81.8	82.8			-1.1	82.8	
	5th Fall	29.4	30.3	25.4	27.7	25.1	22.9	19.1				-10.3	25.7	
% Graduation	4 - Year	54.1	51.8	56.6	55.2	57.1	59.5	63.7				9.6	56.9	
	5 - Year	77.8	77.0	76.8	76.9	77.8	79.3					1.5	77.6	
	6 - Year	82.2	80.7	80.3	80.5	80.3						-1.9	80.8	

Table 6. Retention and graduation rates for UTK first-time full-time freshman (FTFT) by ACT Equivalent, fall cohorts 2007-2016.

Cohort Year		2007	2008	2009	2010	2011	2012	2013	2014	2015	2016	Change	Average	Trend
-----NO SCORE-----														
Number in Initial Cohort		24	10	35	15	22	13	24	50	53	46	22	29	
% Continued	to 2 nd Fall	62.5	70.0	74.3	73.3	72.7	84.6	79.2	90.0	84.9	84.8	22.3	77.6	
	to 3 rd Fall	58.3	50.0	65.7	60.0	54.5	76.9	75.0	78.0	77.4		19.0	66.2	
	to 4 th Fall	58.3	30.0	51.4	53.3	59.1	61.5	62.5	74.0			15.7	56.3	
% Graduation	4 - Year	8.3	20.0	22.9	26.7	31.8	7.7	50.0				41.7	23.9	
	5 - Year	37.5	40.0	40.0	40.0	45.5	53.8					16.3	42.8	
	6 - Year	41.7	40.0	45.7	46.7	50.0						8.3	44.8	
-----ACT EQUIVALENT LT 18-----														
Number in Initial Cohort		16	14	20	16	6	10	13	10	15	14	-2	13	
% Continued	to 2 nd Fall	93.8	71.4	80.0	75.0	83.3	90.0	76.9	90.0	100.0	71.4	-22.3	83.2	
	to 3 rd Fall	93.8	71.4	60.0	81.3	66.7	90.0	61.5	80.0	86.7		-7.1	76.8	
	to 4 th Fall	68.8	71.4	45.0	81.3	66.7	80.0	53.8	60.0			-8.8	65.9	
% Graduation	4 - Year	25.0	21.4	25.0	31.3	33.3	60.0	15.4				-9.6	30.2	
	5 - Year	62.5	50.0	40.0	62.5	50.0	60.0					-2.5	54.2	
	6 - Year	68.8	57.1	40.0	68.8	50.0						-18.8	56.9	
-----ACT EQUIVALENT 18-21-----														
Number in Initial Cohort		389	174	269	226	183	193	201	157	236	259	-130	229	
% Continued	to 2 nd Fall	77.6	74.1	78.8	78.8	82.0	72.0	81.1	75.2	80.5	80.3	2.7	78.0	
	to 3 rd Fall	67.6	67.8	74.3	69.5	73.8	64.2	66.2	66.9	68.6		1.0	68.8	
	to 4 th Fall	61.4	65.5	69.1	64.6	66.7	57.5	61.2	59.2			-2.2	63.2	
% Graduation	4 - Year	29.6	29.9	34.6	32.7	36.1	38.9	41.8				12.2	34.8	
	5 - Year	50.1	52.9	59.5	54.0	55.7	52.8					2.7	54.2	
	6 - Year	54.5	57.5	62.1	58.0	61.2						6.7	58.7	

Retention and graduation rates for UTK first-time full-time freshman (FTFT) by ACT Equivalent, fall cohorts 2007-2016.

Cohort Year		2007	2008	2009	2010	2011	2012	2013	2014	2015	2016			
		-----ACT EQUIVALENT 22-25-----										Change	Average	Trend
Number in Initial Cohort		1646	1459	1192	1510	1445	1385	1408	1739	1517	1582	-64	1488	
% Continued	to 2 nd Fall	81.1	82.0	83.5	80.9	80.6	82.7	85.1	79.6	85.2	81.2	0.1	82.2	
	to 3 rd Fall	73.5	76.0	76.3	72.5	73.9	76.1	77.3	72.4	76.4		2.9	74.9	
	to 4 th Fall	69.4	71.6	71.1	67.4	68.8	72.2	72.7	68.3			-1.1	70.2	
% Graduation	4 - Year	32.4	36.5	36.2	36.9	40.1	43.5	49.3				16.9	39.3	
	5 - Year	58.9	61.8	60.2	59.7	60.8	63.5					4.6	60.8	
	6 - Year	64.3	66.3	65.2	62.9	64.3						0.0	64.6	
		----- ACT EQUIVALENT 26 - 29 -----										Change	Average	Trend
Number in Initial Cohort		1544	1722	1429	1568	1624	1667	1612	1622	1633	1585	41	1601	
% Continued	to 2 nd Fall	85.5	84.3	87.6	86.0	86.1	85.8	86.1	86.1	84.6	86.0	0.5	85.8	
	to 3 rd Fall	77.7	78.7	82.6	79.5	79.9	80.0	80.0	79.9	79.0		1.3	79.7	
	to 4 th Fall	74.4	74.3	78.7	75.1	75.3	76.8	75.2	75.3			1.0	75.6	
% Graduation	4 - Year	38.6	37.6	45.5	44.1	46.7	48.9	52.4				13.8	44.8	
	5 - Year	63.7	64.8	68.2	66.4	68.7	70.5					6.9	67.0	
	6 - Year	69.2	69.7	72.4	70.8	72.8						3.5	71.0	
		----- ACT EQUIVALENT 30 - 36 -----										Change	Average	Trend
Number in Initial Cohort		712	820	753	864	895	928	1003	1111	1246	1354	642	969	
% Continued	to 2 nd Fall	90.2	88.4	91.2	91.3	90.3	92.5	90.7	91.4	90.7	91.2	1.0	90.8	
	to 3 rd Fall	85.5	84.6	87.0	86.9	85.9	87.4	84.8	87.5	85.2		-0.3	86.1	
	to 4 th Fall	83.4	80.2	81.3	82.9	81.1	83.2	81.2	82.0			-1.4	81.9	
% Graduation	4 - Year	48.2	48.5	52.6	54.1	54.5	57.8	59.8				11.6	53.6	
	5 - Year	73.3	73.0	75.0	75.7	75.1	77.9					4.6	75.0	
	6 - Year	79.2	76.8	79.4	78.8	77.7						-1.6	78.4	