

# U.S. News & World Report 2018 Best Colleges Rankings

## Office of Institutional Research and Assessment Summary Report

U.S. News and World Report releases the Best Colleges Rankings each fall. These undergraduate rankings are used by students to help them decide where to apply to college. Rankings are based on criteria such as retention and graduation rates, peer assessments, student selectivity, as well as faculty and financial resources. This report presents the 2018 U.S. News Best Colleges Rankings for the University of Tennessee - Knoxville and our peers. Detailed peer rankings and rankings methodology are presented in the appendices.

<b>The University of Tennessee - Knoxville</b>	<b>2016</b>	<b>2017</b>	<b>2018</b>
<b>Overall Rankings</b>			
<i>National Universities</i>	103	103	103
<i>Public School</i>	47	46	46
<b>Institutional Scores/Rankings</b>			
<i>Overall Score</i>	42	47	49
<i>Undergraduate Academic Reputation Index</i>	n/a	n/a	n/a
<i>Peer Assessment</i>	3.1	3.1	3.2
<i>High School Counselor Score</i>	3.8	3.7	3.6
<i>Graduation &amp; Retention Rank</i>	127	122	120
<i>Six-year graduation rate</i>	69%	70%	69%
<i>Average freshmen retention rate</i>	86%	86%	86%
<i>Over/Under Predicted graduation rate</i>	-5	-2	-2
<i>Faculty Resources Rank</i>	135	137	124
<i>Proportion of classes fewer than 20 students</i>	27.9%	27.8%	30.0%
<i>Proportion of classes with 50+ students</i>	14%	14%	13.0%
<i>Selectivity Rank</i>	82	79	84
<i>SAT/ACT 25<sup>th</sup>-75<sup>th</sup> percentile</i>	24-29	24-30	24-30
<i>Freshmen in top 10% HS Class</i>	50%	54%	54%
<i>Financial Resources Rank</i>	56	72	84
<i>Alumni Giving Rank</i>	127	115	102
<i>Average alumni giving rate</i>	9.5%	9.5%	10.4%

### The University of Tennessee - Knoxville

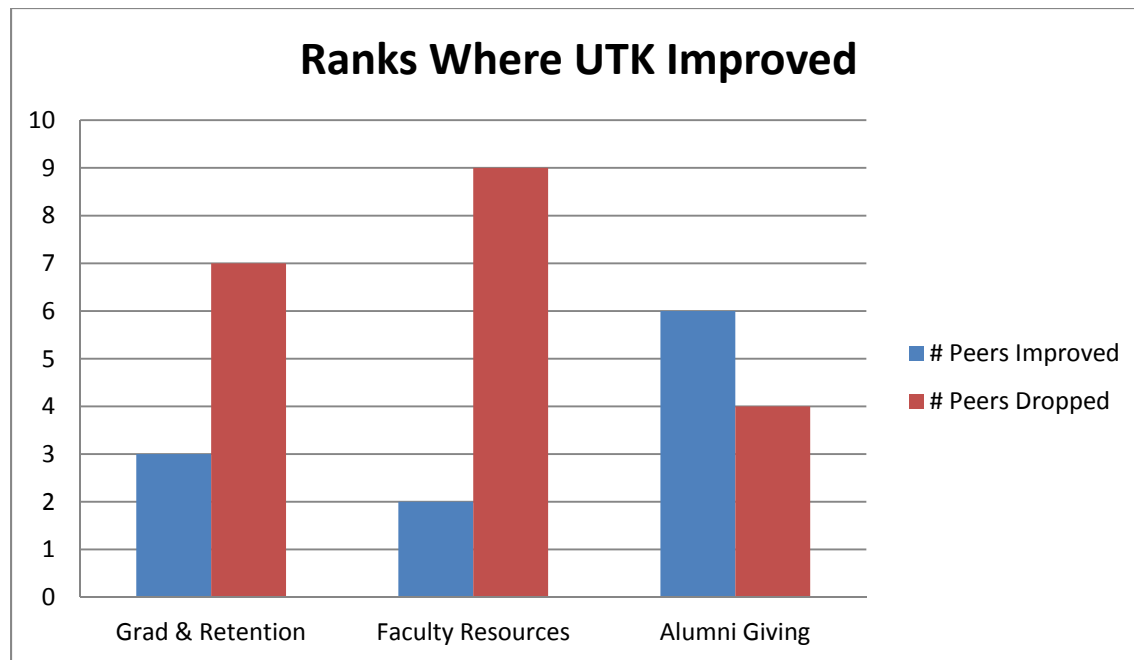
In the 2018 rankings, the University of Tennessee – Knoxville (UTK) mirrored our 2017 rankings. We remained at #46 in the public school rankings and #103 in the national rankings despite an increase in our overall score from 47 in 2017 to 49 in 2018. In the

national rankings UTK is tied with six other institutions and tied with four in the public rankings.

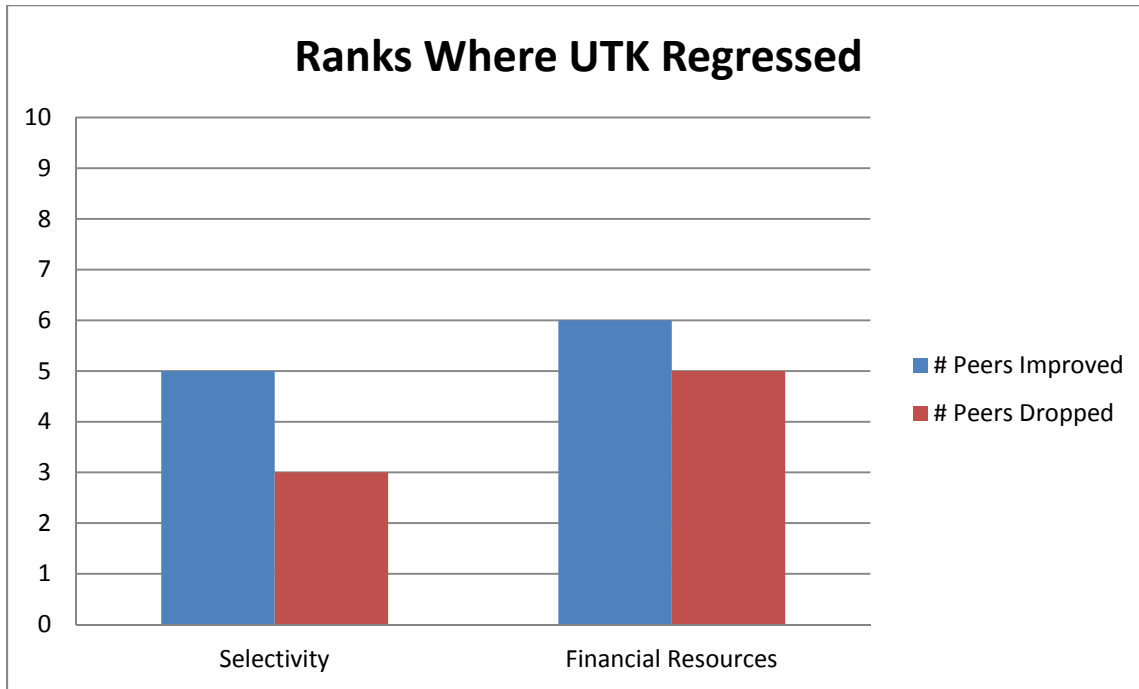
Undergraduate engineering is ranked 61<sup>st</sup> nationally (down 4 places) and 34<sup>th</sup> among publics (down 2). Our undergraduate business program ranked 45<sup>th</sup> nationally (up 3 places) and 27<sup>th</sup> among publics (also up 3 places) with the supply chain/logistics program again being ranked 3<sup>rd</sup> nationally and 2<sup>nd</sup> publically.

Among our comparable peers, six saw a decrease in the national rankings and 5 decreased in the public school rankings from 2017 to 2018. Most of our peers (including UTK) saw decreases in their faculty resources rank even though all 11 had an increase in overall score. Of these peers, 7 also saw decreases in their graduation and retention rank while only 2 had a larger gain than UTK.

The University improved in the following areas: graduation and retention rank, peer assessment, faculty resources rank, proportion of classes fewer than 20 students, proportion of classes with 50+ students, and alumni giving rank.



The University regressed in the following areas: six-year graduation rate (slight decrease), financial resources rank, high school counselor score, and selectivity rank.



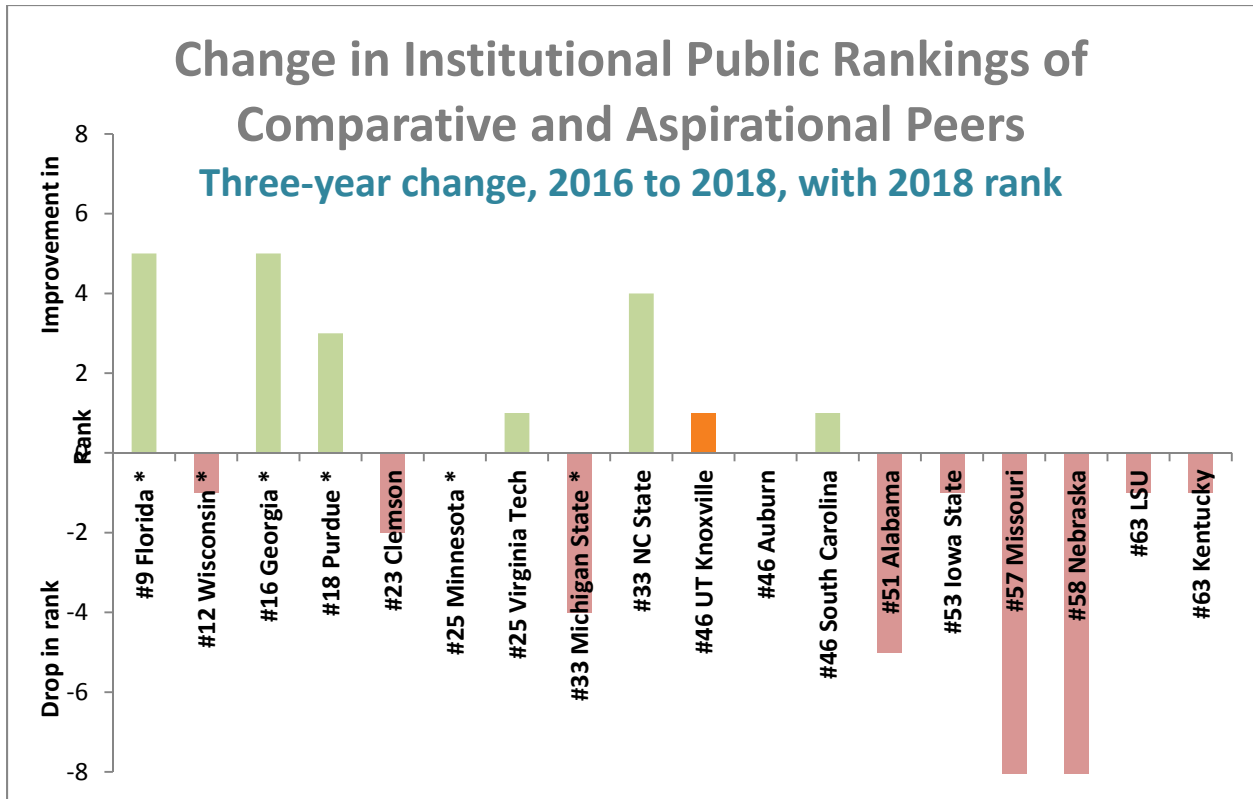
U.S. News measures financial resources by using the average spending per student on instruction, research, student services and related educational expenditures in the 2015 and 2016 fiscal years. Beginning in the fall of 2015, UTK and the Health Science Center were separately accredited and therefore began reporting financial information separately. With the Health Science Center's funds removed from the equation, UTK dropped in the amount of per student spending in the 2017 rankings. As a result of this measure being based on two years of data, the financial resources rank (which counts for 10% of the overall score) fell again for 2018 but will stabilize in the coming years.

Our national and public rankings have remained fairly consistent for the past 3 years. While some sub-rankings have fluctuated over the past few years, slight movements among other Universities also affect our rankings. The faculty resource rank's decrease was due in part to a correction in the way that UTK calculated class size starting with the 2015 rankings, but it has recently improved. The financial resources ranking has also decreased this year as previously explained. All other scores or rankings have either trended upward or remained fairly consistent.

## The University of Tennessee – Knoxville

	2013	2014	2015	2016	2017	2018
<b>Overall Rankings</b>						
<i>National Universities</i>	101	101	106	103	103	103
<i>Public School</i>	46	47	50	47	46	46
<b>Institutional Scores/Rankings</b>						
<i>Overall Score</i>	47	48	44	42	47	49
<i>Peer Assessment</i>	3.1	3.1	3.1	3.1	3.1	3.2
<i>High School Counselor Score</i>	3.6	3.7	3.8	3.8	3.7	3.6
<i>Undergraduate Academic Reputation</i>	65	68	n/a	n/a	n/a	n/a
<i>Graduation &amp; Retention Rank</i>	139	142	135	127	122	120
<i>Faculty Resources Rank</i>	115	85	144	135	137	124
<i>Selectivity Rank</i>	78	70	76	82	79	84
<i>Financial Resources Rank</i>	53	55	55	56	72	84
<i>Alumni Giving Rank</i>	132	129	132	127	115	102

The following chart shows the changes in institution rankings of our comparative and aspirational peers over a three year period, from 2016 to 2018. Over the three year period, 6 peers (and UTK) have increased their public ranking, 9 peers have decreased, and 2 have remained in the same place. Whereas, over a two year period, 9 peers (and UTK) increased, 6 peers decreased, and 3 remained in the same place.



\* Aspirational Peer

## Peer Comparisons

The University of Tennessee – Knoxville has two sets of comparison peers: Comparative and Aspirational. From 2017 to 2018, we were able to maintain our position at 46<sup>th</sup> in the public rankings, while one of our comparative peers over the same 2 year period dropped 7 places, and another dropped 6 places. Four comparative and four aspirational peers rose in the public rankings during this time period. In the following section, we list the schools that exhibited a large increase or decrease in the different categories.

### Comparative Peers

- National Universities ranking
  - Increased in rank: North Carolina State (11) and Virginia Tech (5)
  - Decreased in rank: University of Nebraska (-13), University of Missouri (-9), and University of Alabama (-7)
- Public Universities ranking
  - Increased in rank: North Carolina State (5)

- Decreased in rank: University of Nebraska (-7), University of Missouri (-6), and University of Alabama (-5)
- Graduation and Retention Rank
  - Increased in rank: Iowa State University (9), Auburn University (5)
  - Decreased in rank: University of Missouri (-12), Louisiana State (-5), and University of Nebraska (-5)
- Faculty Resources Rank
  - Increased in Rank: University of South Carolina (26), North Carolina State (19), and UTK (13)
  - Decreased in rank: University of Alabama (-41), Louisiana State (-24), Auburn University (-21), University of Kentucky (-14), Clemson University (-11), and Iowa State University (-9)
- Selectivity Rank:
  - Increased in Rank: University of Missouri (8) and North Carolina State (6)
  - Decreased in rank: Auburn University (-7), University of South Carolina (-6), and UTK (-5)
- Financial Resources Rank:
  - Increased in Rank: Iowa State University (15), University of Missouri (13), and University of Kentucky (6)
  - Decreased in rank: Auburn University (-29), UTK (-12), and University of Nebraska (-6)

### Aspirational Peers

- National Universities ranking
  - Increased in rank: University of Florida (8) and Purdue University (4)
  - Decreased in rank: University of Wisconsin - Madison (-2)
- Public Universities ranking
  - Increased in rank: University of Florida (5)
  - Decreased in rank: University of Wisconsin - Madison (-2)
- Graduation and Retention Rank
  - Increased in rank: UTK (2) and University of Minnesota (1)
  - Decreased in rank: University of Georgia (-3)
- Faculty Resources Rank
  - Increased in Rank: University of Georgia (22), Michigan State University (20), and UTK (13)
  - Decreased in rank: University of Minnesota (-17) and University of Wisconsin - Madison (-6)
- Selectivity Rank:
  - Increased in Rank: University of Florida (7)
  - Decreased in rank: UTK (-5) and Michigan State University (-4)

- Financial Resources Rank:
  - Increased in Rank: University of Georgia (9)
  - Decreased in rank: UTK (-12), Michigan State University (-5), and University of Minnesota (-4)

## SEC

- National Universities ranking
  - Increased in rank: University of Florida (8) and Mississippi State (5)
  - Decreased in rank: University of Mississippi (-10), University of Missouri (-9), and University of Alabama (-7)
- Public Universities ranking
  - Increased in rank: University of Florida (5)
  - Decreased in rank: University of Mississippi (-9), University of Missouri (-6), and University of Alabama (-5)
- Graduation and Retention Rank
  - Increased in rank: Auburn University (5) and UTK (2)
  - Decreased in rank: University of Missouri (-12), Louisiana State (-5), and Mississippi State (-5)
- Faculty Resources Rank
  - Increased in Rank: University of South Carolina (26), University of Georgia (22), and UTK (13)
  - Decreased in rank: University of Alabama (-41), Louisiana State (-24), Mississippi State (-22), Auburn University (-21), University of Kentucky (-14), and University of Missouri (-14)
- Selectivity Rank:
  - Increased in Rank: Texas A&M (44) and Mississippi State (27)
  - Decreased in rank: Auburn University (-7) and University of Georgia (-6)
- Financial Resources Rank:
  - Increased in Rank: University of Missouri (13), University of Georgia (9), and University of Arkansas (8)
  - Decreased in rank: Auburn University (-29) and UTK (-12)

In the 2018 national rankings the University of Tennessee – Knoxville tied with six other universities. The following public institutions tied with UTK: Auburn University, University of New Hampshire, University of Oregon (again), and the University of South Carolina. Of the three schools that we were tied with last year, two saw no movement (University of Oregon and Illinois Institute of Technology) and one (University of Alabama) fell in the rankings.

# **U.S. News & World Report 2018 Best College Rankings**

## **Appendix A: UTK and Peer Comparison Tables**



USNWR Best Colleges Rankings  
2017-2018 Comparison

UTK Peers	2018 National Universities	2017 National Universities	Change	2018 Public Schools	2017 Public Schools	Change	2018 Peer Assessment	2017 Peer Assessment	Change
<i>University of Tennessee - Knoxville</i>	103	103	0	46	46	0	3.2	3.1	0.1
<b>Comparable Peers</b>									
Auburn University	103	99	-4	46	43	-3	3.3	3.3	0
Clemson University	67	66	-1	23	23	0	3.3	3.2	0.1
Iowa State University	115	111	-4	53	51	-2	3.3	3.3	0
Louisiana State University	133	135	2	63	64	1	2.9	2.8	0.1
North Carolina State University - Raleigh	81	92	11	33	38	5	3.2	3.1	0.1
University of Alabama	110	103	-7	51	46	-5	3.2	3.1	0.1
University of Kentucky	133	133	0	63	63	0	3.1	3.0	0.1
University of Missouri	120	111	-9	57	51	-6	3.2	3.2	0
University of Nebraska	124	111	-13	58	51	-7	3.2	3.2	0
University of South Carolina	103	107	4	46	49	3	3.1	3.0	0.1
Virginia Tech	69	74	5	25	27	2	3.5	3.5	0
<b>Aspirational Peers</b>									
Michigan State University	81	82	1	33	33	0	3.6	3.5	0.1
Purdue University	56	60	4	18	20	2	3.8	3.7	0.1
University of Georgia	54	56	2	16	18	2	3.5	3.5	0
University of Florida	42	50	8	9	14	5	3.7	3.6	0.1
University of Minnesota	69	71	2	25	26	1	3.7	3.7	0
University of Wisconsin - Madison	46	44	-2	12	10	-2	4.0	4.0	0

USNWR Best Colleges Rankings  
2017-2018 Comparison

UTK Peers		2018 High School Counselor Score	2017 High School Counselor Score	Change	2018 Graduation & Retention Rank	2017 Graduation & Retention Rank	Change	2018 Faculty Resources Rank	2017 Faculty Resources Rank	Change
<i>University of Tennessee - Knoxville</i>		3.6	3.7	-0.1	120	122	2	124	137	13
<b>Comparable Peers</b>										
Auburn University		3.8	3.8	0	97	102	5	145	124	-21
Clemson University		4.0	4.0	0	60	58	-2	89	78	-11
Iowa State University		3.5	3.6	-0.1	104	113	9	194	185	-9
Louisiana State University		3.6	3.5	0.1	138	133	-5	194	170	-24
North Carolina State University - Raleigh		3.5	3.6	-0.1	81	82	1	138	157	19
University of Alabama		3.7	3.7	0	127	125	-2	178	137	-41
University of Kentucky		3.6	3.7	-0.1	164	162	-2	206	192	-14
University of Missouri		3.6	3.6	0	125	113	-12	159	157	-2
University of Nebraska		3.4	3.6	-0.2	138	133	-5	150	145	-5
University of South Carolina		3.7	3.7	0	97	97	0	159	185	26
Virginia Tech		4.1	4.0	0.1	49	47	-2	166	163	-3
<b>Aspirational Peers</b>										
Michigan State University		3.8	3.9	-0.1	77	77	0	210	230	20
Purdue University		4.2	4.2	0	92	92	0	74	74	0
University of Georgia		4.1	4.0	0.1	47	44	-3	44	66	22
University of Florida		3.9	3.8	0.1	34	33	-1	89	89	0
University of Minnesota		3.8	3.8	0	81	82	1	215	198	-17
University of Wisconsin - Madison		4.0	4.0	0	41	40	-1	124	118	-6

USNWR Best Colleges Rankings  
2017-2018 Comparison

UTK Peers	2018 Selectivity Rank	2017 Selectivity Rank	Change	2018 Financial Resources Rank	2017 Financial Resources Rank	Change	2018 Alumni Giving Rank	2017 Alumni Giving Rank	Change
<i>University of Tennessee - Knoxville</i>	84	79	-5	84	72	-12	102	115	13
<b>Comparable Peers</b>									
Auburn University	101	94	-7	174	145	-29	79	88	9
Clemson University	64	65	1	129	125	-4	29	30	1
Iowa State University	140	140	0	147	162	15	79	79	0
Louisiana State University	116	117	1	136	140	4	102	115	13
North Carolina State University - Raleigh	64	70	6	97	98	1	86	88	2
University of Alabama	89	89	0	211	212	1	16	13	-3
University of Kentucky	120	121	1	72	78	6	67	62	-5
University of Missouri	104	112	8	163	176	13	63	58	-5
University of Nebraska	133	131	-2	136	130	-6	43	42	-1
University of South Carolina	104	98	-6	179	176	-3	61	62	1
Virginia Tech	124	124	0	114	112	-2	92	103	11
<b>Aspirational Peers</b>									
Michigan State University	110	106	-4	103	98	-5	140	152	12
Purdue University	84	82	-2	87	86	-1	41	42	1
University of Georgia	64	65	1	121	130	9	76	94	18
University of Florida	47	54	7	49	46	-3	86	68	-18
University of Minnesota	60	58	-2	46	42	-4	127	127	0
University of Wisconsin - Madison	52	54	2	61	63	2	67	79	12

## USNWR Best Colleges Scores and National Rankings Three-Year Trend Comparisons

UTK Peers	2018 Overall Score	2017 Overall Score	2016 Overall Score	Plus or Minus Score	2018 National Universities	2017 National Universities	2016 National Universities	Plus or Minus National
<i>University of Tennessee - Knoxville</i>	49	47	42	7	103	103	103	0
<b>Comparable Peers</b>								
Auburn University	49	48	43	6	103	99	102	-1
Clemson University	59	58	55	4	67	66	61	-6
Iowa State University	47	45	41	6	115	111	108	-7
Louisiana State University	43	40	36	7	133	135	129	-4
North Carolina State University - Raleigh	54	50	46	8	81	92	89	8
University of Alabama	48	47	45	3	110	103	96	-14
University of Kentucky	43	41	36	7	133	133	129	-4
University of Missouri	46	45	42	4	120	111	103	-17
University of Nebraska	45	45	42	3	124	111	103	-21
University of South Carolina	49	46	41	8	103	107	108	5
Virginia Tech	57	54	52	5	69	74	70	1
<b>Aspirational Peers</b>								
Michigan State University	54	52	49	5	81	82	75	-6
Purdue University	61	59	55	6	56	60	61	5
University of Georgia	62	60	55	7	54	56	61	7
University of Florida	65	62	60	5	42	50	47	5
University of Minnesota	57	55	53	4	69	71	69	0
University of Wisconsin - Madison	64	63	61	3	46	44	41	-5

## USNWR Best Colleges Rankings 2018 Peer Rankings Comparison

UTK Peers	National Universities	Public Schools	Overall Score	Peer Assessment	High School Counselor Score	Graduation & Retention Rank	Faculty Resources Rank
<i>University of Tennessee - Knoxville</i>	103	46	49	3.2	3.6	120	124
<b>Comparable Peers</b>							
Auburn University	103	46	49	3.3	3.8	97	145
Clemson University	67	23	59	3.3	4.0	60	89
Iowa State University	115	53	47	3.3	3.5	104	194
Louisiana State University	133	63	43	2.9	3.6	138	194
North Carolina State University - Raleigh	81	33	54	3.2	3.5	81	138
University of Alabama	110	51	48	3.2	3.7	127	178
University of Kentucky	133	63	43	3.1	3.6	164	206
University of Missouri	120	57	46	3.2	3.6	125	159
University of Nebraska	124	58	45	3.2	3.4	138	150
University of South Carolina	103	46	49	3.1	3.7	97	159
Virginia Tech	69	25	57	3.5	4.1	49	166
<b>Aspirational Peers</b>							
Michigan State University	81	33	54	3.6	3.8	77	210
Purdue University	56	18	61	3.8	4.2	92	74
University of Georgia	54	16	62	3.5	4.1	47	44
University of Florida	42	9	65	3.7	3.9	34	89
University of Minnesota	69	25	57	3.7	3.8	81	215
University of Wisconsin - Madison	46	12	64	4.0	4.0	41	124

## USNWR Best Colleges Rankings 2018 Peer Rankings Comparison

UTK Peers	Selectivity Rank	Financial Resources Rank	Alumni Giving Rank
<i>University of Tennessee - Knoxville</i>	84	84	102
<b>Comparable Peers</b>			
Auburn University	101	174	79
Clemson University	64	129	29
Iowa State University	140	147	79
Louisiana State University	116	136	102
North Carolina State University - Raleigh	64	97	86
University of Alabama	89	211	16
University of Kentucky	120	72	67
University of Missouri	104	163	63
University of Nebraska	133	136	43
University of South Carolina	104	179	61
Virginia Tech	124	114	92
<b>Aspirational Peers</b>			
Michigan State University	110	103	140
Purdue University	84	87	41
University of Georgia	64	121	76
University of Florida	47	49	86
University of Minnesota	60	46	127
University of Wisconsin - Madison	52	61	67

## USNWR Best Colleges Rankings 2018 Peer Categories Comparison

UTK Peers	Public Schools	Overall Score	Peer Assessment	High School Counselor Score	Predicted 6-Year Graduation Rate	Actual 6-Year Graduation Rate	Over(+)/Under(-) Performance
<i>University of Tennessee - Knoxville</i>							
	46	49	3.2	3.6	71.0%	69.0%	-2%
<b>Comparable Peers</b>							
Auburn University	46	49	3.3	3.8	78.0%	75.0%	-3%
Clemson University	23	59	3.3	4.0	77.0%	81.0%	4%
Iowa State University	53	47	3.3	3.5	68.0%	74.0%	6%
Louisiana State University	63	43	2.9	3.6	70.0%	68.0%	-2%
North Carolina State University - Raleigh	33	54	3.2	3.5	72.0%	78.0%	6%
University of Alabama	51	48	3.2	3.7	73.0%	69.0%	-4%
University of Kentucky	63	43	3.1	3.6	70.0%	64.0%	-6%
University of Missouri	57	46	3.2	3.6	70.0%	68.0%	-2%
University of Nebraska	58	45	3.2	3.4	68.0%	67.0%	-1%
University of South Carolina	46	49	3.1	3.7	68.0%	73.0%	5%
Virginia Tech	25	57	3.5	4.1	74.0%	84.0%	10%
<b>Aspirational Peers</b>							
Michigan State University	33	54	3.6	3.8	68.0%	78.0%	10%
Purdue University	18	61	3.8	4.2	70.0%	77.0%	7%
University of Georgia	16	62	3.5	4.1	79.0%	85.0%	6%
University of Florida	9	65	3.7	3.9	83.0%	87.0%	4%
University of Minnesota	25	57	3.7	3.8	77.0%	78.0%	1%
University of Wisconsin - Madison	12	64	4.0	4.0	83.0%	85.0%	2%

\* Converted from SAT scores

## USNWR Best Colleges Rankings 2018 Peer Categories Comparison

UTK Peers	Average Freshmen Retention Rate	Classes Under 20	Classes of 50 or More	Student/Faculty Ratio	Percentage of Full-Time Faculty	ACT 25th-75th Percentile	Freshmen in Top 10% of Class
<i>University of Tennessee - Knoxville</i>	86%	30.0%	13.0%	17:1	95.6%	24-30	54%
<b>Comparable Peers</b>							
Auburn University	90%	32.0%	16.0%	19:1	95.3%	24-30	30%
Clemson University	93%	51.0%	15.0%	18:1	97.5%	26-31	57%
Iowa State University	87%	29.0%	25.0%	19:1	94.0%	22-28	22%
Louisiana State University	84%	36.0%	22.0%	22:1	95.8%	23-28	25%
North Carolina State University - Raleigh	94%	38.0%	15.0%	13:1	94.8%	27-31	50%
University of Alabama	87%	36.0%	22.0%	23:1	88.9%	23-31	37%
University of Kentucky	83%	31.0%	16.0%	17:1	85.8%	22-28	30%
University of Missouri	86%	40.0%	18.0%	19:1	97.8%	23-29	30%
University of Nebraska	83%	37.0%	18.0%	21:1	99.7%	22-28	24%
University of South Carolina	88%	36.0%	17.0%	18:1	86.2%	25-30	28%
Virginia Tech	93%	29.0%	21.0%	14:1	96.0%	22-28*	40%
<b>Aspirational Peers</b>							
Michigan State University	92%	27.0%	23.0%	17:1	94.7%	24-29	30%
Purdue University	92%	38.0%	18.0%	12:1	95.1%	24-28*	43%
University of Georgia	95%	46.0%	11.0%	18:1	95.9%	23-28*	55%
University of Florida	96%	48.0%	15.0%	20:1	93.1%	24-29*	73%
University of Minnesota	92%	36.0%	21.0%	17:1	87.8%	26-31	48%
University of Wisconsin - Madison	95%	44.0%	21.0%	18:1	93.9%	27-31	54%

\* Converted from SAT scores



## USNWR Best Colleges Rankings 2018 Peer Categories Comparison

UTK Peers	Acceptance Rate	Average Alumni Giving Rate
<i>University of Tennessee - Knoxville</i>	77.0%	10.0%
<b>Comparable Peers</b>		
Auburn University	81.0%	13.0%
Clemson University	51.0%	23.0%
Iowa State University	87.0%	12.0%
Louisiana State University	76.0%	11.0%
North Carolina State University - Raleigh	46.0%	11.5%
University of Alabama	53.0%	30.0%
University of Kentucky	91.0%	14.0%
University of Missouri	75.0%	14.0%
University of Nebraska	75.0%	18.0%
University of South Carolina	68.0%	15.0%
Virginia Tech	71.0%	11.0%
<b>Aspirational Peers</b>		
Michigan State University	66.0%	8.0%
Purdue University	56.0%	19.0%
University of Georgia	54.0%	13.0%
University of Florida	46.0%	12.0%
University of Minnesota	44.0%	9.0%
University of Wisconsin - Madison	53.0%	13.0%

\* Converted from SAT scores

## USNWR Best Colleges Rankings 2017 Peer Categories Comparison

UTK Peers	Public Schools	Overall Score	Peer Assessment	High School Counselor Score	Predicted 6-Year Graduation Rate	Actual 6-Year Graduation Rate	Over(+)/Under(-) Performance
<i>University of Tennessee - Knoxville</i>	46	47	3.1	3.7	72.0%	70.0%	-2%
<b>Comparable Peers</b>							
Auburn University	43	48	3.3	3.8	72.0%	73.0%	1%
Clemson University	23	58	3.2	4.0	76.0%	81.0%	5%
Iowa State University	51	45	3.3	3.6	67.0%	71.0%	4%
Louisiana State University	64	40	2.8	3.5	69.0%	67.0%	-2%
North Carolina State University - Raleigh	38	50	3.1	3.6	72.0%	76.0%	4%
University of Alabama	46	47	3.1	3.7	69.0%	67.0%	-2%
University of Kentucky	63	41	3.0	3.7	67.0%	61.0%	-6%
University of Missouri	51	45	3.2	3.6	69.0%	69.0%	0%
University of Nebraska	51	45	3.2	3.6	67.0%	67.0%	0%
University of South Carolina	49	46	3.0	3.7	69.0%	73.0%	4%
Virginia Tech	27	54	3.5	4.0	75.0%	83.0%	8%
<b>Aspirational Peers</b>							
Michigan State University	33	52	3.5	3.9	67.0%	77.0%	10%
Purdue University	20	59	3.7	4.2	70.0%	76.0%	6%
University of Georgia	18	60	3.5	4.0	79.0%	85.0%	6%
University of Florida	14	62	3.6	3.8	85.0%	87.0%	2%
University of Minnesota	26	55	3.7	3.8	76.0%	77.0%	1%
University of Wisconsin - Madison	10	63	4.0	4.0	81.0%	85.0%	4%

\* Converted from SAT scores

## USNWR Best Colleges Rankings 2017 Peer Categories Comparison

UTK Peers	Average Freshmen Retention Rate	Classes Under 20	Classes of 50 or More	Student/Faculty Ratio	Percentage of Full-Time Faculty	ACT 25th-75th Percentile	Freshmen in Top 10% of Class
<i>University of Tennessee - Knoxville</i>							
	86%	27.8%	14.0%	17:1	95.7%	24-30	54%
<b>Comparable Peers</b>							
Auburn University	90%	32.5%	15.0%	19:1	95.2%	24-30	31%
Clemson University	92%	52.5%	14.0%	18:1	96.4%	27-31	56%
Iowa State University	87%	31.6%	24.0%	19:1	94.5%	22-28	22%
Louisiana State University	84%	36.3%	22.0%	23:1	97.7%	23-28	26%
North Carolina State University - Raleigh	93%	35.2%	17.0%	14:1	95.1%	24-28*	51%
University of Alabama	86%	38.7%	20.0%	24:1	88.2%	22-31	37%
University of Kentucky	82%	32.1%	16.0%	17:1	85.5%	22-28	30%
University of Missouri	85%	40.1%	17.0%	20:1	97.3%	24-29	28%
University of Nebraska	84%	37.0%	17.0%	22:1	99.5%	22-28	26%
University of South Carolina	88%	34.1%	15.0%	18:1	85.4%	22-27*	30%
Virginia Tech	93%	28.0%	21.0%	14:1	95.7%	22-27*	39%
<b>Aspirational Peers</b>							
Michigan State University	92%	23.8%	24.0%	17:1	94.7%	23-28	31%
Purdue University	92%	39.6%	18.0%	12:1	95.3%	21-28*	43%
University of Georgia	94%	41.8%	13.0%	18:1	94.8%	23-28*	53%
University of Florida	96%	48.6%	16.0%	21:1	96.6%	24-29*	72%
University of Minnesota	92%	37.9%	20.0%	17:1	87.6%	26-31	49%
University of Wisconsin - Madison	95%	45.1%	21.0%	17:1	94.2%	27-31	54%

\* Converted from SAT scores

## USNWR Best Colleges Rankings 2017 Peer Categories Comparison

UTK Peers	Acceptance Rate	Average Alumni Giving Rate
<i>University of Tennessee - Knoxville</i>	76.0%	9.9%
<b>Comparable Peers</b>		
Auburn University	78.0%	12.0%
Clemson University	51.0%	23.1%
Iowa State University	87.0%	12.8%
Louisiana State University	77.0%	10.1%
North Carolina State University - Raleigh	50.0%	12.3%
University of Alabama	54.0%	33.8%
University of Kentucky	91.0%	15.0%
University of Missouri	78.0%	15.1%
University of Nebraska	76.0%	19.0%
University of South Carolina	65.0%	14.7%
Virginia Tech	73.0%	11.0%
<b>Aspirational Peers</b>		
Michigan State University	66.0%	8.0%
Purdue University	59.0%	18.9%
University of Georgia	53.0%	11.4%
University of Florida	48.0%	14.0%
University of Minnesota	45.0%	9.3%
University of Wisconsin - Madison	49.0%	13.1%

\* Converted from SAT scores

**USNWR Best Colleges Rankings  
2018 SEC Schools Comparison**

<b>SEC Comparison</b>	<b>UTK</b>	<b>Ole Miss</b>	<b>Miss State</b>	<b>Arkansas</b>	<b>Kentucky</b>	<b>South Carolina</b>	<b>Missouri</b>	<b>Auburn</b>	<b>Alabama</b>	<b>Texas A&amp;M</b>	<b>UGA</b>	<b>Florida</b>	<b>Vanderbilt</b>	<b>LSU</b>
National Rank	103	145	171	133	133	103	120	103	110	69	54	42	14	133
Public School Rank	46	73	90	63	63	46	57	46	51	25	16	9	-	63
Overall Score	49	41	36	43	43	49	46	49	48	57	62	65	86	43
Graduation and Retention Rank	120	157	174	157	164	97	125	97	127	73	47	34	14	138
Faculty Resource Rank	124	184	239	120	206	159	159	145	178	184	44	89	13	194
Student Selectivity Rank	84	140	148	120	120	104	104	101	89	80	64	47	11	116
Financial Resources Rank	84	121	158	163	72	179	163	174	211	87	121	49	12	136
Alumni Giving Rank	102	56	54	29	67	61	63	79	16	47	76	86	22	102
Peer Assessment Score (Out of 5)	3.2	2.9	2.6	2.9	3.1	3.1	3.2	3.3	3.2	3.6	3.5	3.7	4.2	2.9
High School Counselor Score (Out of 5)	3.6	3.5	3.3	3.4	3.6	3.7	3.6	3.8	3.7	4.1	4.1	3.9	4.7	3.6
Predicted 6 year Graduation Rate	71%	63%	61%	70%	70%	68%	70%	78%	73%	76%	79%	83%	94%	70%
Actual 6 Year Graduation Rate	69%	60%	60%	64%	64%	73%	68%	75%	69%	80%	85%	87%	92%	68%
Over/Under Performance	-2%	-3%	-1%	-6%	-6%	5%	-2%	-3%	-4%	4%	6%	4%	-2%	-2%
Average Freshman Retention Rate	86%	86%	80%	82%	83%	88%	86%	90%	87%	91%	95%	96%	97%	84%
% of Classes Under 20	30.0%	41.0%	35.0%	48.0%	31.0%	36.0%	40.0%	32.0%	36.0%	22.0%	46.0%	48.0%	66.0%	36.0%
% of Classes of 50 or More	13.0%	17.0%	15.0%	18.0%	16.0%	17.0%	18.0%	16.0%	22.0%	26.0%	11.0%	15.0%	9.0%	22.0%
Student-Faculty Ratio	17:1	18:1	20:1	19:1	17:1	18:1	19:1	19:1	23:1	21:1	18:1	20:1	8:1	22:1
% of Full Time Faculty	95.6%	91.3%	94.9%	95.3%	85.8%	86.2%	97.8%	95.3%	88.9%	91.6%	95.9%	93.1%	91.4%	95.8%
ACT Low/High	24-30	22-29	21-28	23-29	22-28	25-30	23-29	24-30	23-31	21-28*	23-28*	24-29*	32-35	23-28
Freshman in Top 10% of HS Class	54%	25%	28%	25%	30%	28%	30%	30%	37%	66%	55%	73%	87%	25%
Acceptance Rate	77.0%	78.0%	71.0%	63.0%	91.0%	68.0%	75.0%	81.0%	53.0%	66.0%	54.0%	46.0%	11.0%	76.0%
Average Alumni Giving Rate	10.0%	16.0%	16.0%	22.0%	14.0%	15.0%	14.0%	13.0%	30.0%	17.0%	13.0%	12.0%	25.0%	11.0%

\*Converted from SAT Scores

**USNWR Best Colleges Rankings**  
**Institutions Tied with UTK at National Ranking = 103**

	Graduation & Retention Rank	Graduation Over(+) / Under(-) Performance	Average Freshmen Retention Rate	Actual 6-Year Graduation Rate	Faculty Resources Rank	Selectivity Rank	Financial Resources Rank	Alumni Giving Rank
<b>2018 Rankings</b>								
Auburn University	97	-3%	90%	75%	145	101	174	79
Illinois Institute of Technology	110	-3%	92%	71%	69	60	121	152
Loyola University	102	4%	85%	75%	106	96	121	184
University of New Hampshire	83	17%	86%	78%	150	189	136	173
University of Oregon	110	9%	87%	72%	106	172	147	127
University of South Carolina	97	5%	88%	73%	159	104	179	61
University of Tennessee	120	-2%	86%	69%	124	84	84	102
<b>2017 Rankings</b>								
Illinois Institute of Technology	102	-4%	92%	73%	66	63	112	152
University of Alabama	125	-2%	86%	67%	137	89	212	13
University of Oregon	113	10%	87%	72%	108	155	162	127
University of Tennessee	122	-2%	86%	70%	137	79	72	115
<b>2016 Rankings</b>								
University of Missouri	106	0%	85%	69%	129	100	173	62
University of Nebraska	122	0%	84%	67%	111	124	123	41
University of New Hampshire	80	13%	86%	77%	102	196	139	156
University of Oregon	117	6%	86%	69%	91	161	161	139
University of Tennessee	127	-5%	86%	69%	135	82	56	127
<b>2015 Rankings</b>								
Iowa State University	103	2%	87%	68%	147	129	145	75
Loyola University	99	-2%	86%	71%	118	92	117	114
University of Kansas	149	-5%	80%	62%	86	126	82	65
University of Oklahoma	124	-3%	84%	66%	136	107	77	48
University of Oregon	114	5%	86%	67%	129	145	156	121
University of San Francisco	103	5%	86%	69%	77	113	125	132
University of Tennessee	135	-4%	86%	68%	144	76	55	132

# **U.S. News & World Report 2018 Best College Rankings**

## **Appendix B: Methodology**

## U.S. News 2018 Best Colleges Rankings Methodology

<b>Undergraduate academic reputation</b>	22.5%	Peer assessment survey	66.7%
		High school counselors' ratings	33.3%
<b>Graduation and Retention Rates</b>	22.5%	Average graduation rate	80%
		Average freshman retention rate	20%
<b>Faculty resources</b>	20%	Faculty compensation	35%
		Percent faculty with terminal degree in their field	15%
		Percent faculty that is full time	5%
		Student/faculty ratio	5%
		Class size	40%
<b>Student Selectivity</b> (Fall 2016 entering class)	12.5%	Acceptance rate	10%
		High school class standing in top 10%	25%
		High school class standing in top 25%	0%
		Critical Reading and Math portions of the SAT and the composite ACT scores	65%
<b>Financial Resources</b> (the average of fiscal years 2015 and 2016)	10%	Financial resources per student	100%
<b>Graduation Rate Performance</b>	7.5%	Graduation rate performance	100%
<b>Alumni Giving</b> (Average of 2014-15 and 2015-16)	5%	Average alumni giving rate	100%



**Graduation and retention rates (22.5 percent):** This measure has two components: six-year graduation rate (80 percent of the score) and first-year retention rate (20 percent). The graduation rate indicates the average proportion of a graduating class earning a degree in six years or less; we consider first-year student classes that started from fall 2007 through fall 2010. First-year retention indicates the average proportion of first-year students who entered the school in the fall 2012 through fall 2015 and returned the following fall.

**Undergraduate academic reputation (22.5 percent):** The U.S. News ranking formula gives weight to the opinions of those in a position to judge a school's undergraduate academic excellence. The academic peer assessment survey allows top academics – presidents, provosts and deans of admissions – to account for intangibles at peer institutions, such as faculty dedication to teaching.

To get another set of important opinions on National Universities and National Liberal Arts Colleges, U.S. News also surveyed 2,200 counselors at public high schools, each of which was a gold, silver or bronze medal winner in a recent edition of the U.S. News Best High Schools rankings. The counselors surveyed represent every state and the District of Columbia.

Each academic and counselor surveyed was asked to rate schools' academic programs on a scale from 1 (marginal) to 5 (distinguished). Those who didn't know enough about a school to evaluate it fairly were asked to mark "don't know."

The academic peer assessment score in this year's rankings is based on the results from surveys in spring 2016 and spring 2017. The results from the three most recent years of counselor surveys, from spring 2015, 2016 and 2017, were averaged to compute the high school counselor reputation score.

**Faculty resources (20 percent):** U.S. News uses five factors from the 2016-2017 academic year to assess a school's commitment to instruction.

Class size is 40 percent of this measure. The methodology was changed in this year's rankings. Schools receive the most credit in this index for their proportion of undergraduate classes with fewer than 20 students. Classes with 20-29 students score second highest; those with 30-39 students, third highest; and those with 40-49 students, fourth highest. Classes that have 50 or more students receive no credit.

Faculty salary (35 percent) is the average faculty pay, plus benefits, during the 2015-2016 and 2016-2017 academic years, adjusted for regional differences in the cost of living. U.S. News also weighs the proportion of professors with the highest degree in their fields (15 percent), the student-faculty ratio (5 percent) and the proportion of faculty who are full time (5 percent).

**Student selectivity (12.5 percent):** This measure has three components. U.S. News factors in the admissions test scores for all enrollees who took the critical reading and

math portions of the SAT and the composite ACT score (65 percent of the selectivity score).

U.S. News also considers the proportion of enrolled first-year students at National Universities and National Liberal Arts Colleges who graduated in the top 10 percent of their high school classes or the proportion of enrolled first-year students at Regional Universities and Regional Colleges who graduated in the top quarter of their classes (25 percent).

The third component is the acceptance rate, or the ratio of students admitted to applicants (10 percent).

The data are all for the fall 2016 entering class. While the ranking calculation takes account of both the SAT and ACT scores of all entering students, the ranking tables on usnews.com display the score range for whichever test most students took.

**Financial resources (10 percent):** Generous per-student spending indicates that a college can offer a wide variety of programs and services. U.S. News measures financial resources by using the average spending per student on instruction, research, student services and related educational expenditures in the 2015 and 2016 fiscal years. Spending on sports, dorms and hospitals doesn't count.

**Graduation rate performance (7.5 percent):** This indicator of added value shows the effect of the college's programs and policies on the graduation rate of students after controlling for spending and student characteristics, such as test scores and the proportion receiving Pell Grants. U.S. News measures the difference between a school's six-year graduation rate for the class that entered in 2010 and the rate U.S. News had predicted for the class.

If the school's actual graduation rate for the 2010 entering class is higher than the rate U.S. News predicted for that same class, then the college is enhancing achievement, or over-performing. If a school's actual graduation rate is lower than the U.S. News prediction, then it is underperforming.

**Alumni giving rate (5 percent):** This reflects the average percentage of living alumni with bachelor's degrees who gave to their school during 2014-2015 and 2015-2016, which is an indirect measure of student satisfaction.